

# PLAT AND RECORD

V-3 175

PG 156 BELOIT  
REC 12/12/75 DAB

**MICROFILMED**

Of a Survey on Section 26-27 T 1 R 11 E. of the 4 P. M. in Newark Township

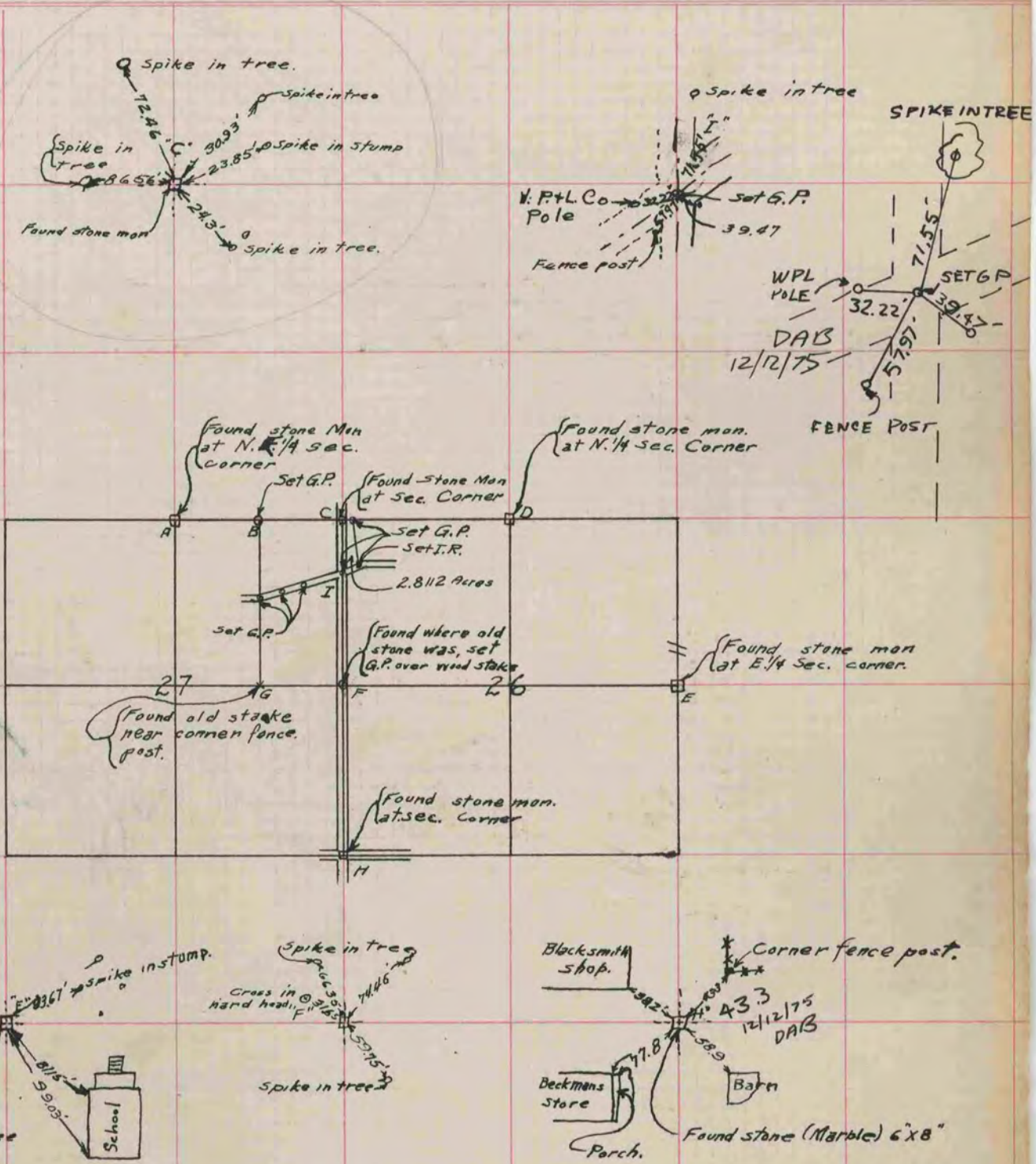
Rock County, Wisconsin, made April the 5<sup>th</sup> 1930

I hereby certify that the following is a correct record of said survey as made by me.

COUNTY BUILDING  
CITY OF JANESVILLE

*R.A. Battersman*

County Surveyor.



Order #1750