

282 V-3

PG 276 BELOIT REC

PLAT AND RECORD

12/15/75 DAR

Of a Survey on Section 34 & 35 T 3N. R 13 E. of the 4 P. M. in Johnstown Township

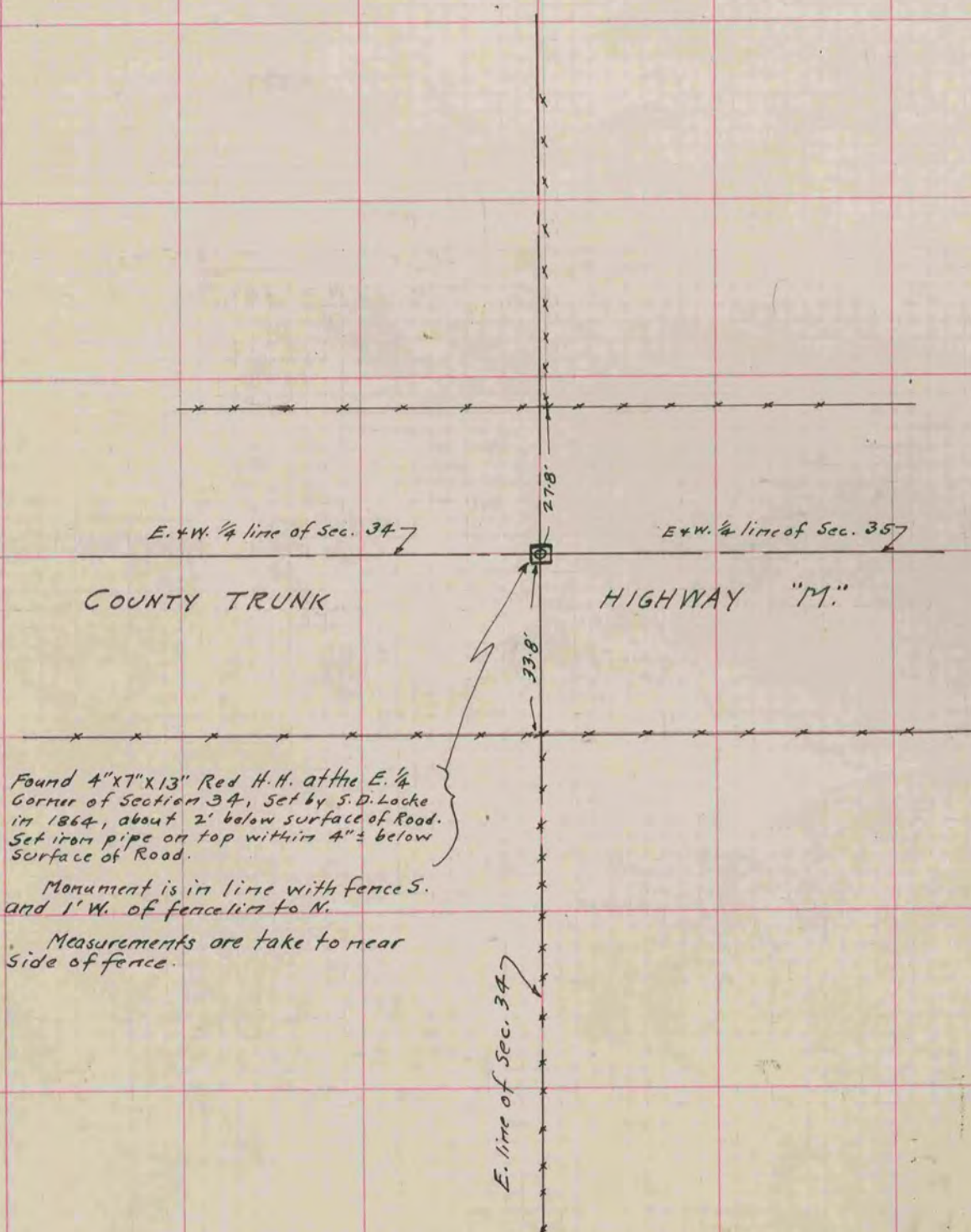
Rock County, Wisconsin, made December the 4, 1935

I hereby certify that the following is a correct record of said survey as made by me.

MICROFILMED

COUNTY BUILDING
CITY OF JANESVILLE

B. J. Sunny
County Surveyor.



Found 4"x7"x13" Red H.H. at the E. 1/4
Corner of Section 34, Set by S.D. Locke
in 1864, about 2' below surface of Road.
Set iron pipe on top within 4"± below
Surface of Road.

Monument is in line with fence S.
and 1' W. of fence line to N.

Measurements are take to near
Side of fence.

E. line of Sec. 34

E. & W. 1/4 line of Sec. 34

E. & W. 1/4 line of Sec. 35

COUNTY TRUNK

HIGHWAY "M."

278'

338'