

MICROFILMED PLAT AND RECORD

V-3 303

COUNTY BUILDING
CITY OF JANESVILLE

PG 297 BELOIT REC
12/15/75 DAB

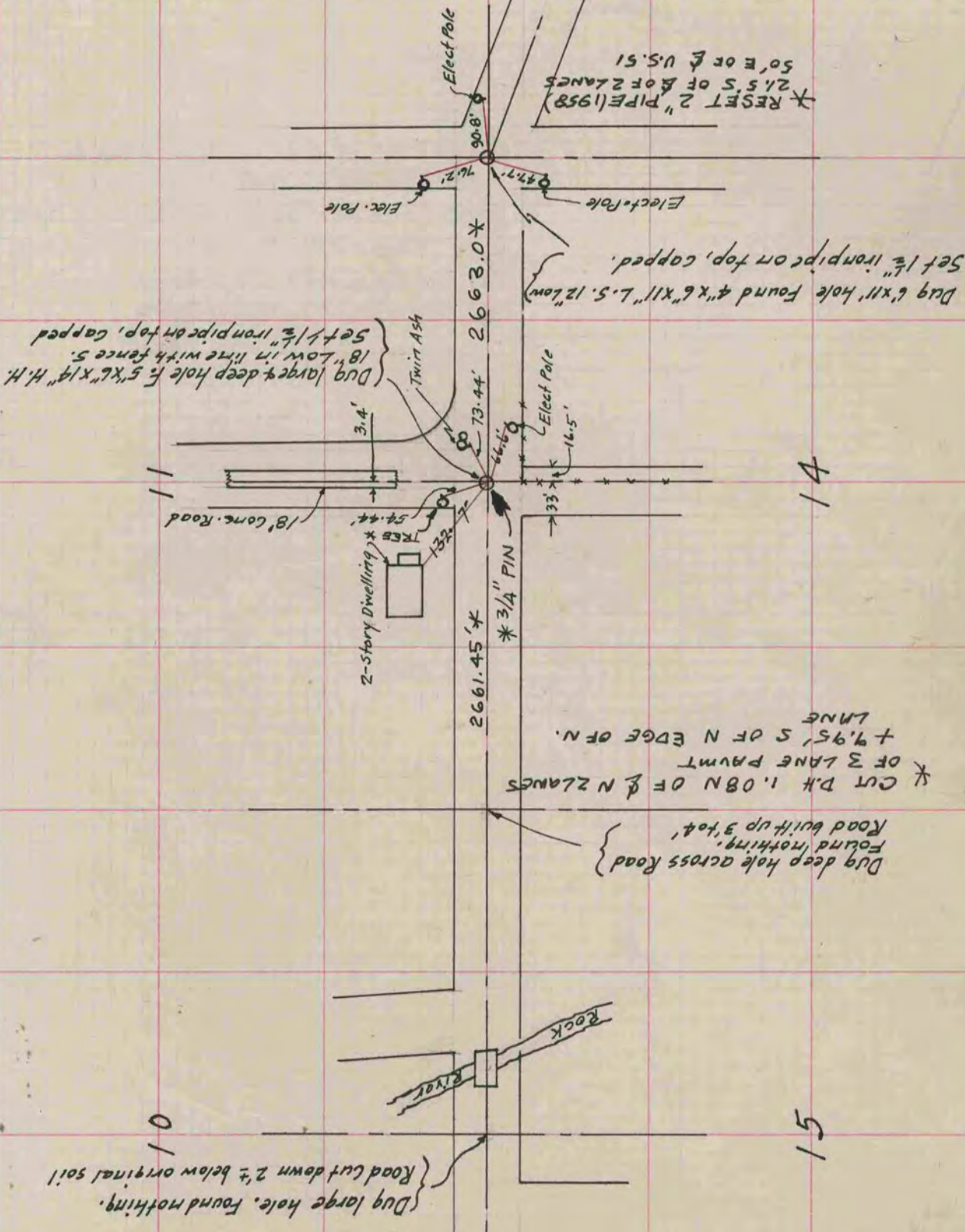
Of a Survey on Sections 10, 11 T 3N. R 12 E. of the 4 P. M. in Janesville Township
14 & 15
Rock County, Wisconsin, made between July 1, & Dec. 18, 1936

I hereby certify that the following is a correct record of said survey as made by me.

B. J. Bunn
County Surveyor.

NOTE:
All references are to 40 d. spk. in Poles & blazed trees,
taken before the Road was Black topped.
The Mon. set flush with Black top pavement.

* COPIED FROM BELOIT REC
12/15/75 DAB



12

14

15