

MICROFILMED

PLAT AND RECORD

V-3 305

PG 300 BELoit REC
12/15/75 DAB

N.W. 1/4 of S.E. 1/4

CITY OF JANESVILLE

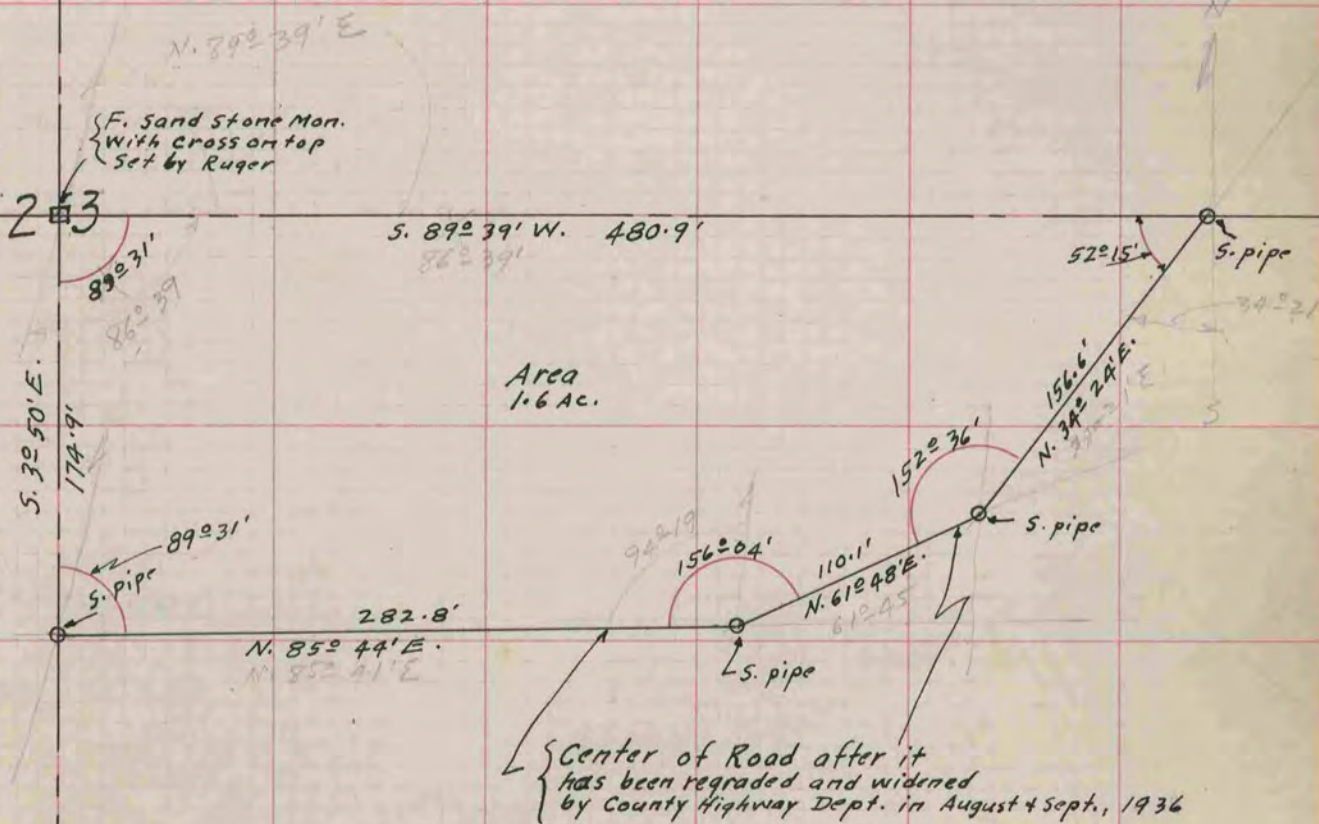
Of a Survey on Section 23 T 2N. R 11 E. of the 4 P. M. in Plymouth Township

Rock County, Wisconsin, made Sept. the 24-25, 1936

I hereby certify that the following is a correct record of said survey as made by me.

COUNTY BUILDING
CITY OF JANESVILLE

B. Bunny
County Surveyor.



89° 31'
 89-31'
 156° 04'
 152° 36'
 52° 15'
 539° 17'
 321