

392 v-3

P6 382 BELOIT REC

# PLAT AND RECORD

12/16/75 PA3

25, 26, 35

COUNTY BUILDING  
CITY OF JANESVILLE

Of a Survey on Section 36 T. 3 N. R. 10 E. of the 4 P. M. in Magnolia Township

Rock County, Wisconsin, made March the 24 1938.

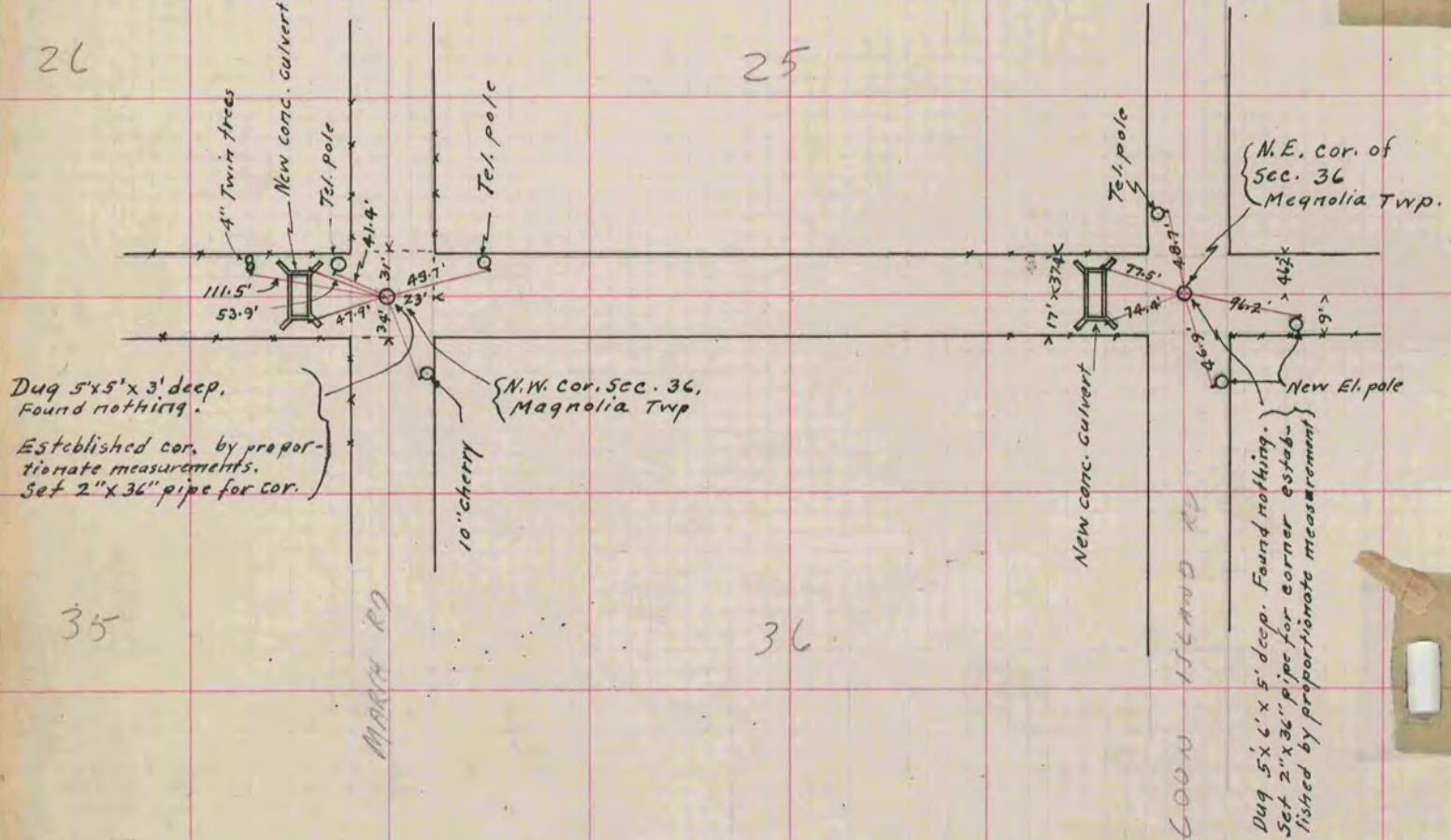
**MICROFILMED**

I hereby certify that the following is a correct record of said survey as made by me.

*B. J. Sunny*  
County Surveyor.

Corner of Sections 25, 26, 35 & 36

East Corner of Sections 25 & 36



See page 511 & 512 This record book