

PLAT AND RECORD

PG 384 BELOIT REC

12/16/75 DAB

19420

COUNTY BUILDING
CITY OF JANESVILLE

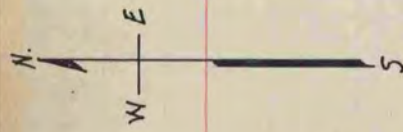
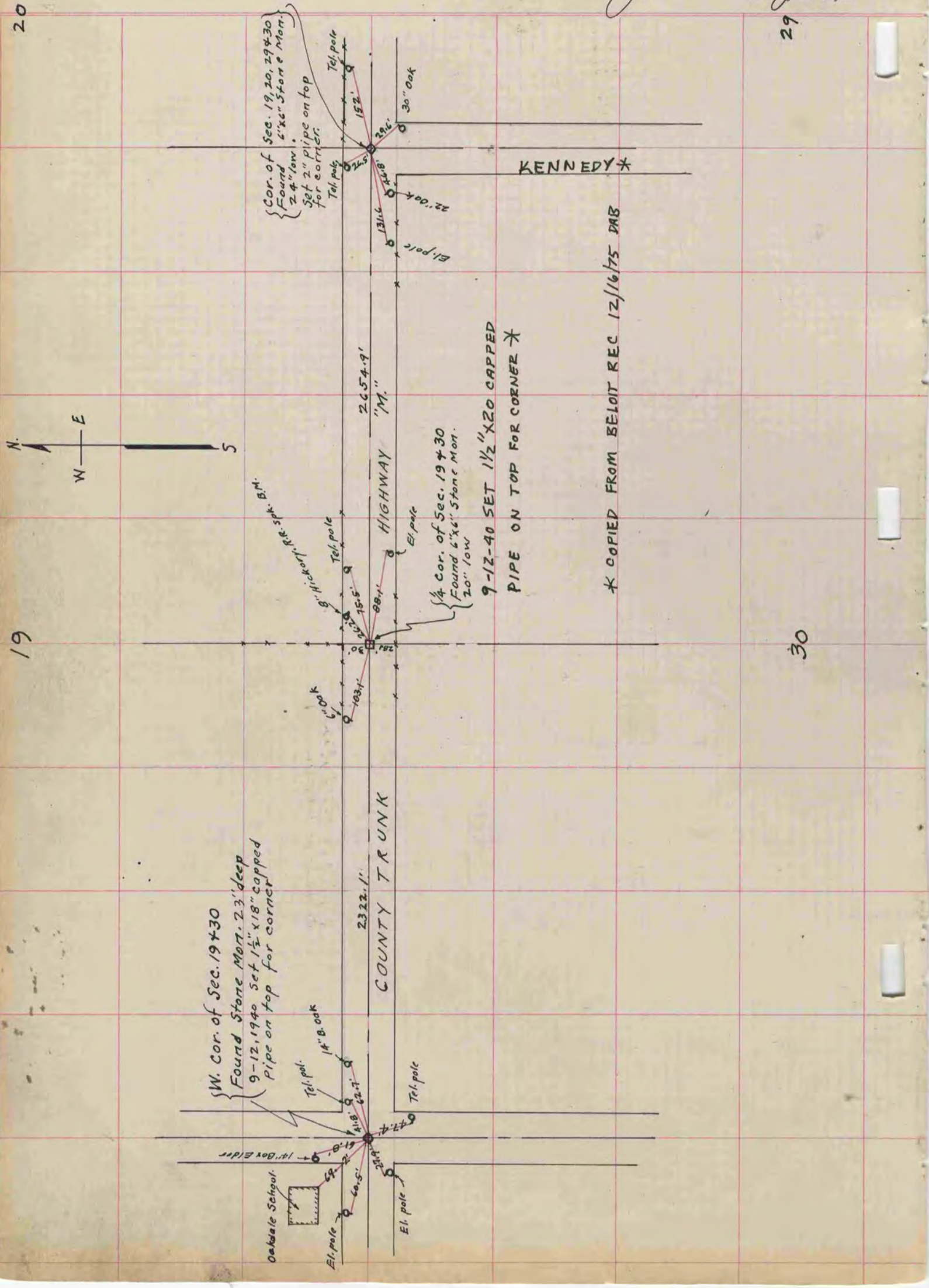
Of a Survey on Section 29430 T.4N. R.13 E. of the 4 P. M. in Milton Township

Rock County, Wisconsin, made May the 12 & 13 1938

I hereby certify that the following is a correct record of said survey as made by me.

MICROFILMED

B. J. Sunny
County Surveyor.



{ W. Cor. of Sec. 19430
Found Stone Mon. 2.3' deep
9-12, 1940 Set 1 1/2" x 18" capped
pipe on top for corner

{ Cor. of Sec. 19, 20, 29430
Found 6"x6" Stone Mon.
24" low.
Set 2" pipe on top
for corner.

{ 1/4 Cor. of Sec. 19430
Found 6"x6" Stone Mon.
20" low

9-12-40 SET 1 1/2" X 20" CAPPED
PIPE ON TOP FOR CORNER *

* COPIED FROM BELOIT REC 12/16/75 DAB