

408-3

PG 398 BELOIT REC
12/16/75 DAB

PLAT AND RECORD

OUT LOT 18 Assessor's Plat of Clinton

N.E. 1/4 OF S.W. 1/4

Of a Survey on Section 8 T 1 N R 14 E. of the 4 P. M. in Clinton Township

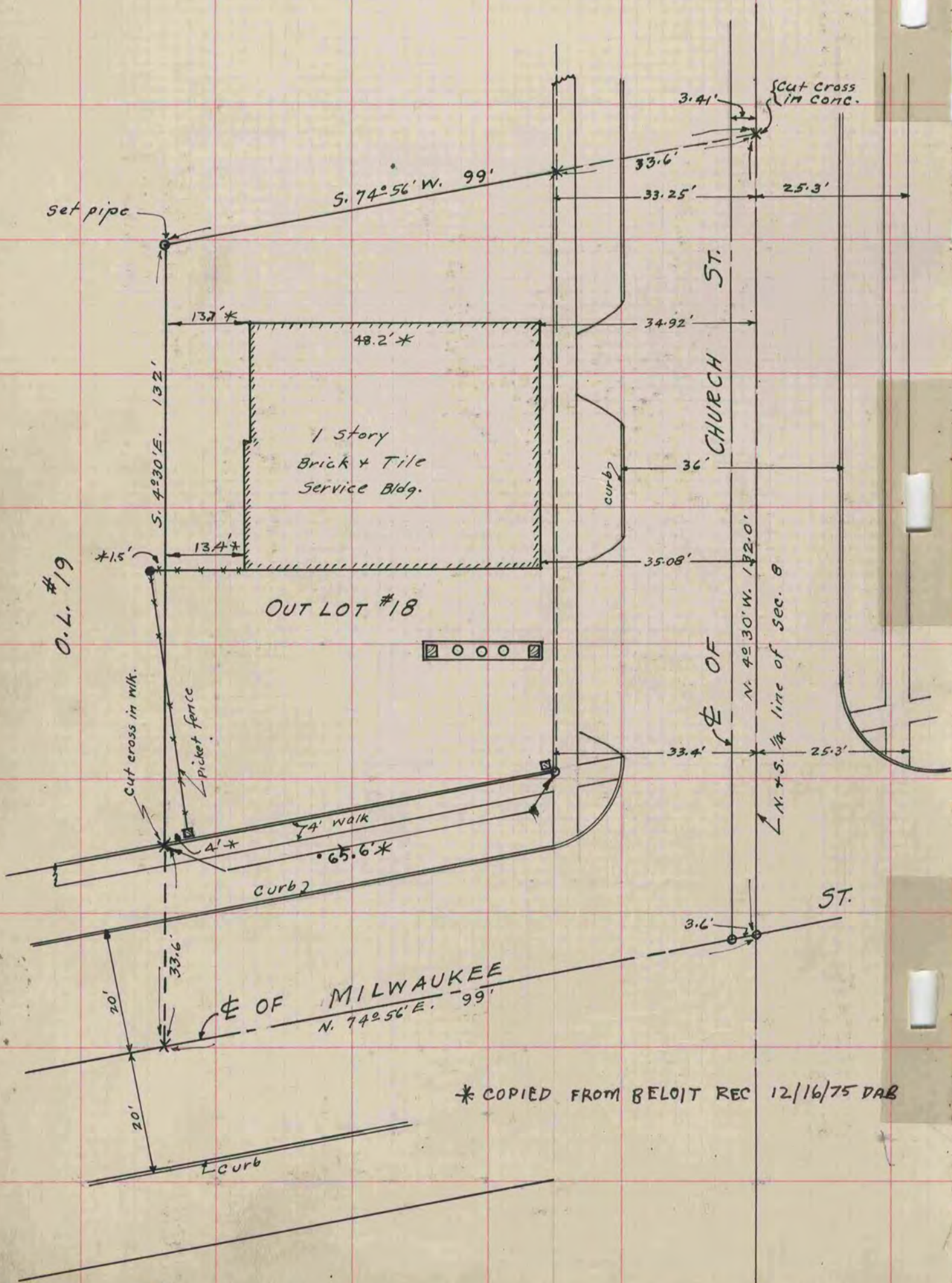
Rock County, Wisconsin, made April the 6th 1939.

I hereby certify that the following is a correct record of said survey as made by me.

MICROFILMED

COUNTY BUILDING
CITY OF JANESVILLE

B. Bunny
County Surveyor.



* COPIED FROM BELOIT REC 12/16/75 DAB