

# PLAT AND RECORD

PG 400 BELOIT REC

12/16/75 DAB N.E. 1/4 OF

COUNTY BUILDING  
CITY OF JANESVILLE

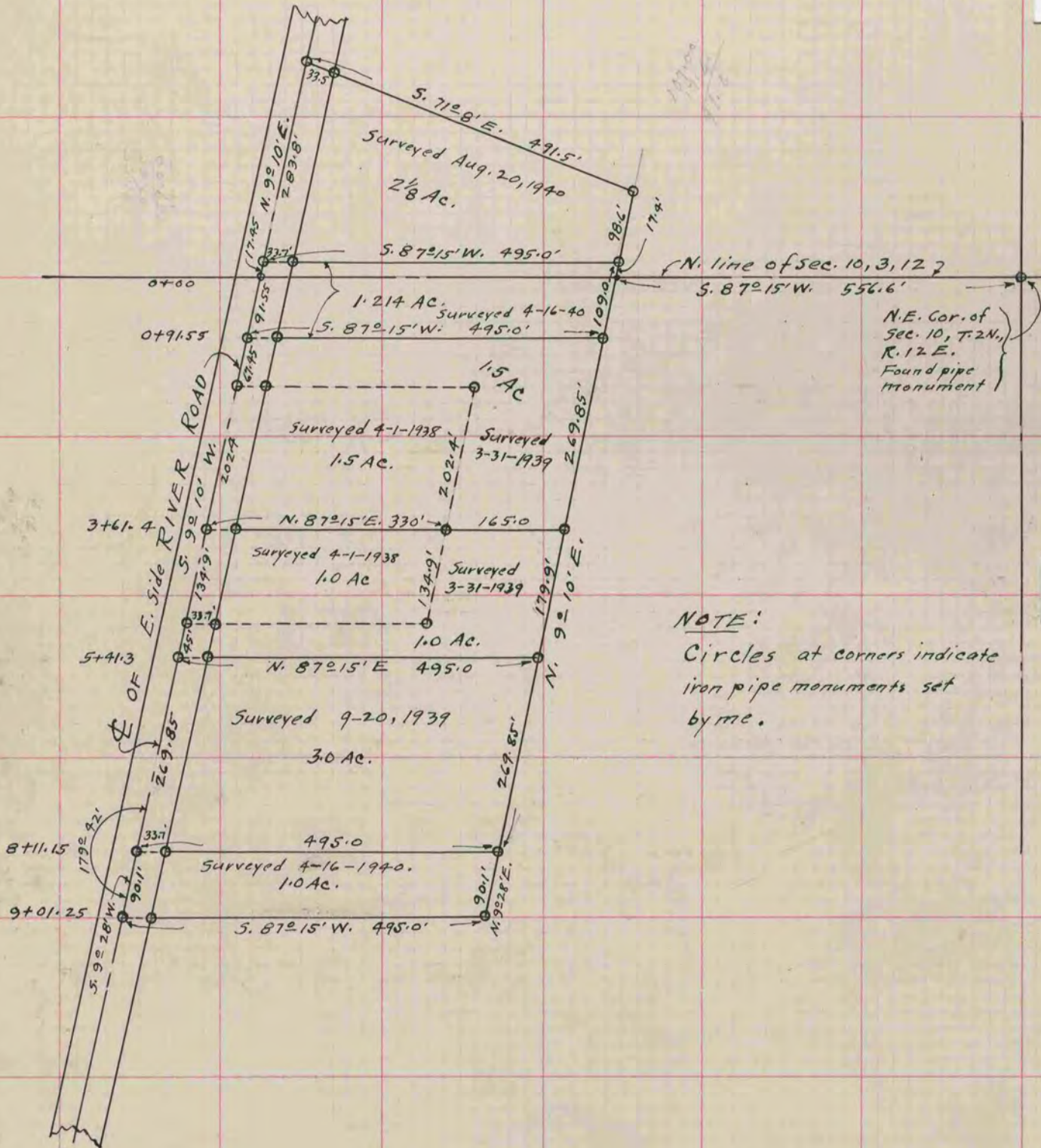
Of a Survey on Section 10 T.2N., R.12 E. of the 4 P. M. in Rock Township

Rock County, Wisconsin, made March the 31, 1939  
April the 16, 1940  
August the 20, 1940

I hereby certify that the following is a correct record of said survey as made by me.

**MICROFILMED**

*B. Bunny*  
County Surveyor.



**NOTE:**  
Circles at corners indicate  
iron pipe monuments set  
by me.

N.E. Cor. of  
Sec. 10, T.2N.,  
R.12 E.  
Found pipe  
monument