

PLAT AND RECORD

COUNTY BUILDING
CITY OF JANESVILLE

537
V-3

Of a Survey on Section 23 T 4N R 11 E. of the 4 P. M. in PORTER Township

Rock County, Wisconsin, made OCTOBER the 20TH 1958

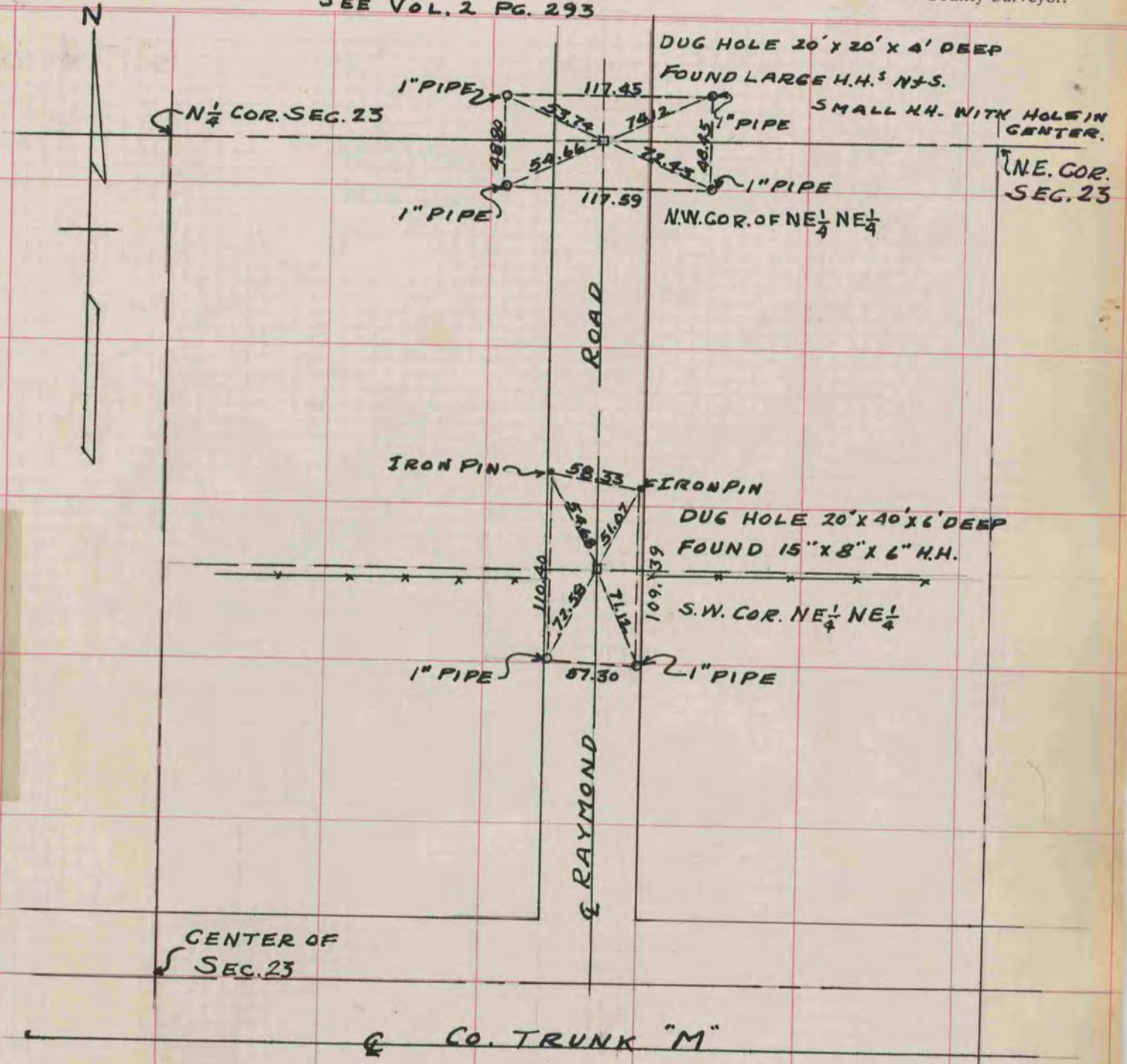
I hereby certify that the following is a correct record of said survey as made by me.

MICROFILMED

R. B. Hume

County Surveyor.

SEE VOL. 2 PG. 293



WORK DONE BY:

- T. DULL
- L. MCKAY
- J. GREEN

VOID
SEE
VOL 5
PG 253