

# PLAT AND RECORD

23

V-4

COUNTY BUILDING  
CITY OF JANESVILLE

Of a Survey on Section 13 T 2N R 14 E. of the 4 P. M. in BRADFORD Township

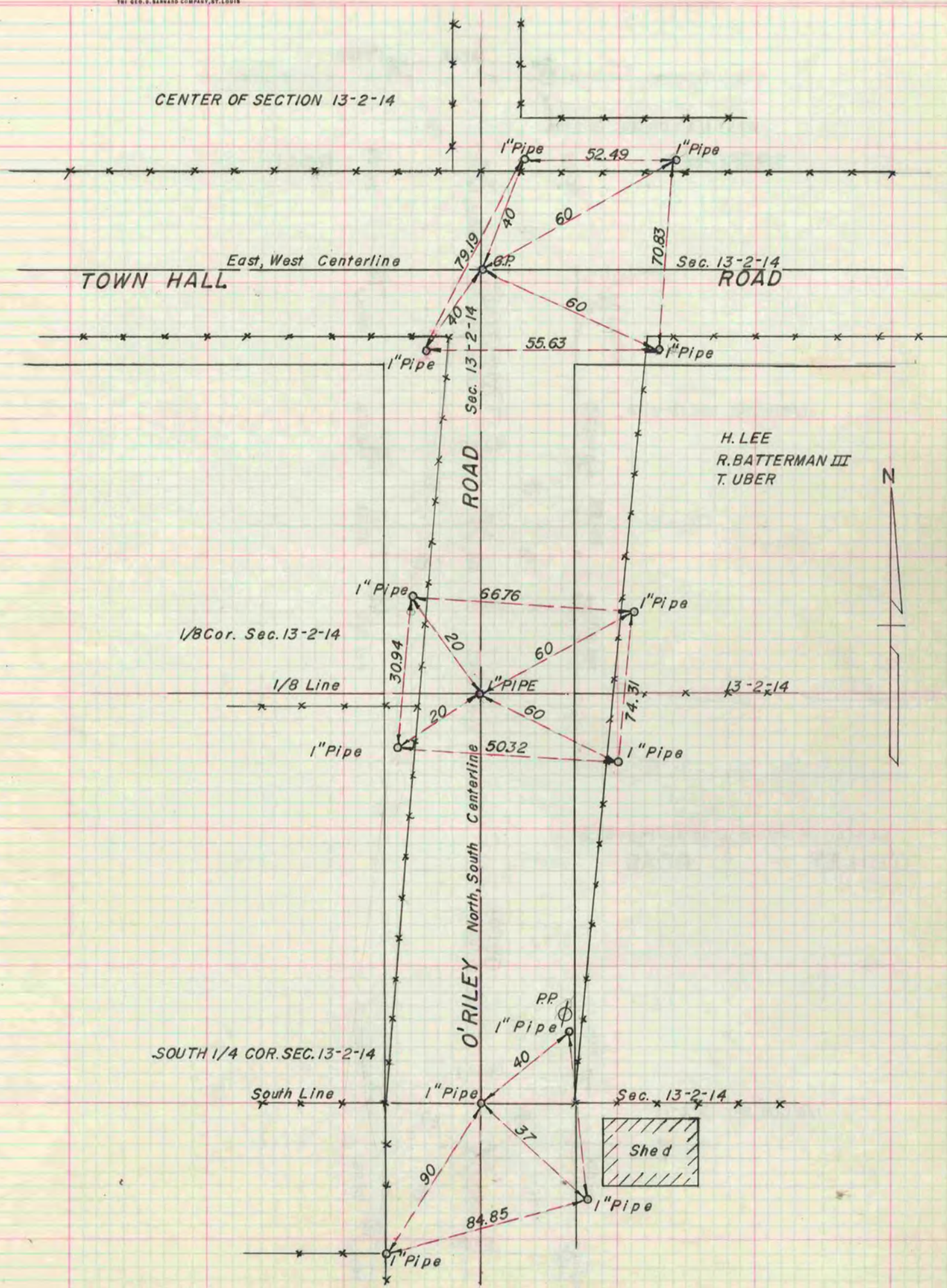
Rock County, Wisconsin, made AUGUST the 1st 1959

I hereby certify that the following is a correct record of said survey as made by me.

**MICROFILMED**

*R. B. Batterman III*  
County Surveyor.

THE GEO. B. BARNARD COMPANY, ST. LOUIS



H. LEE  
R. BATTERMAN III  
T. UBER