

PLAT AND RECORD

271

V-4

COUNTY BUILDING CITY OF JANESVILLE

Of a Survey on Section **3** T **1** R **11** E. of the 4 P. M. in **NEWARK** Township

Rock County, Wisconsin, made **APRIL** the **9** 19**66**

I hereby certify that the following is a correct record of said survey as made by me.

MICROFILMED

R. H. B. [Signature]

County Surveyor.

THE GEO. D. BARNARD COMPANY, ST. LOUIS

ROAD

SEE PG. 31, VOL. 4

3

GROVE

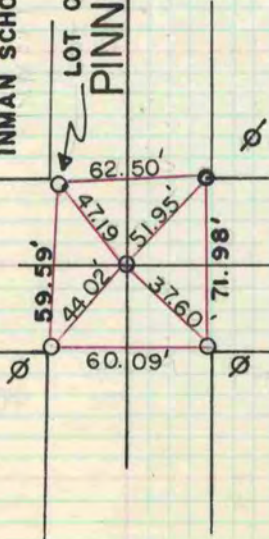
INMAN SCHOOL

LOT CORNER

PINNOW

GROVE SCHOOL

ROAD



FD. LG. H.H. OVER 6"x6"
CUT L.S. WITH TOP
BROKEN OFF.