

CITY OF JANESVILLE
COUNTY BUILDING

PLAT AND RECORD

363
V-4

Of a Survey on Section 16 T 4N R 13 E. of the 4 P. M. in MILTON Township

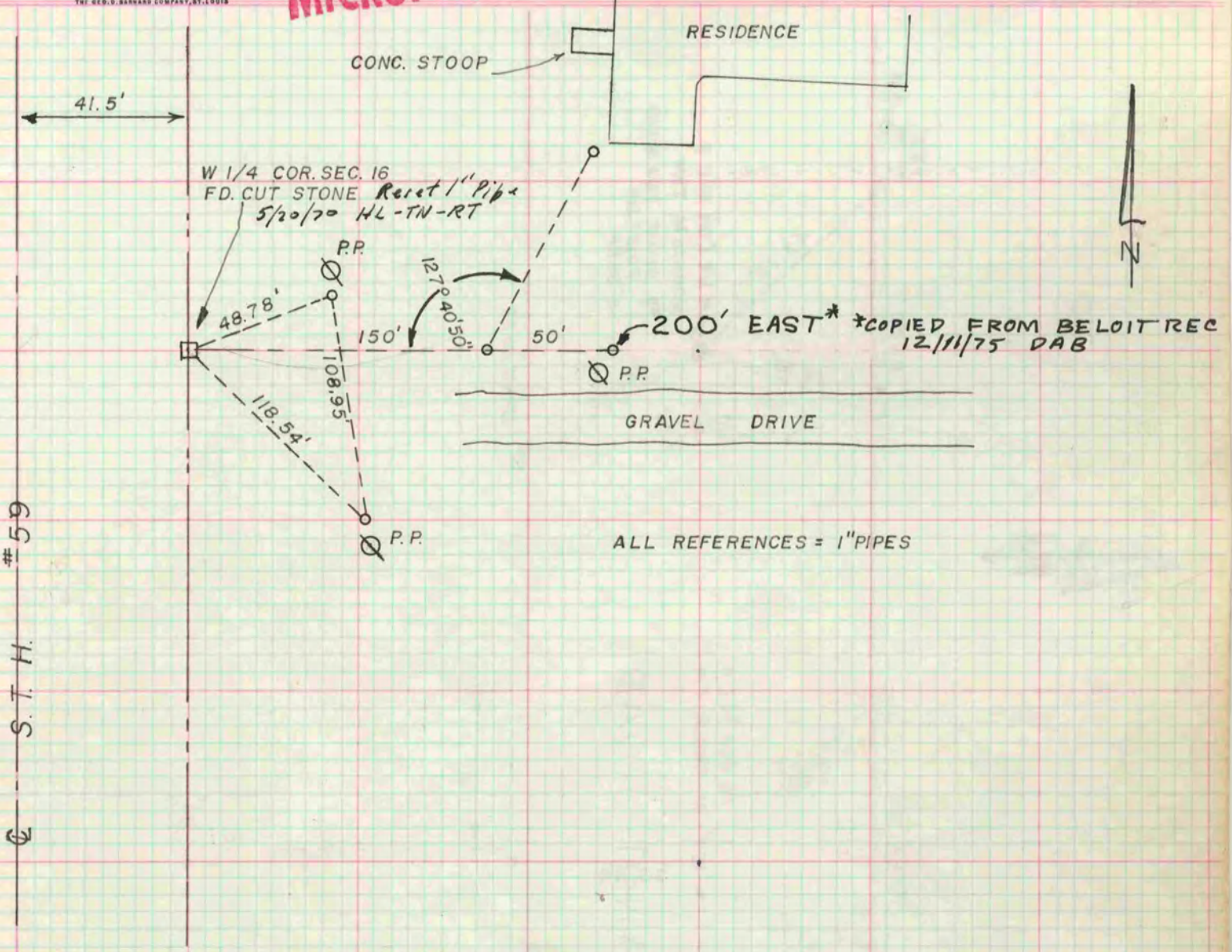
Rock County, Wisconsin, made MAY the 4 1968

I hereby certify that the following is a correct record of said survey as made by me.

MICROFILMED

R. B. Ottum

County Surveyor.



59
S. T. H.