

# PLAT AND RECORD

COUNTY BUILDING  
CITY OF JANESVILLE

Of a Survey on Section **31** T **1 N** R **12** E. of the 4 P. M. in **BELOIT** Township

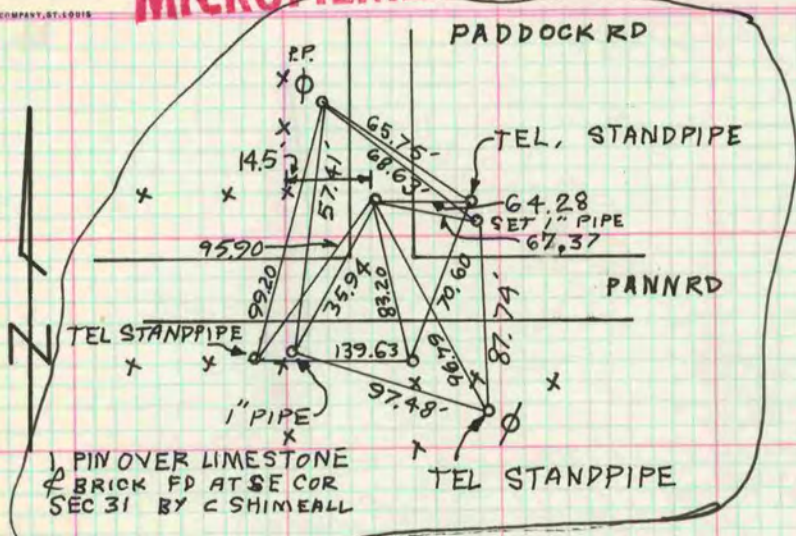
Rock County, Wisconsin, made **FEBRUARY** the **22** 19**69**

I hereby certify that the following is a correct record of said survey as made by me.

**MICROFILMED**

*R. W. B. [Signature]*

County Surveyor.

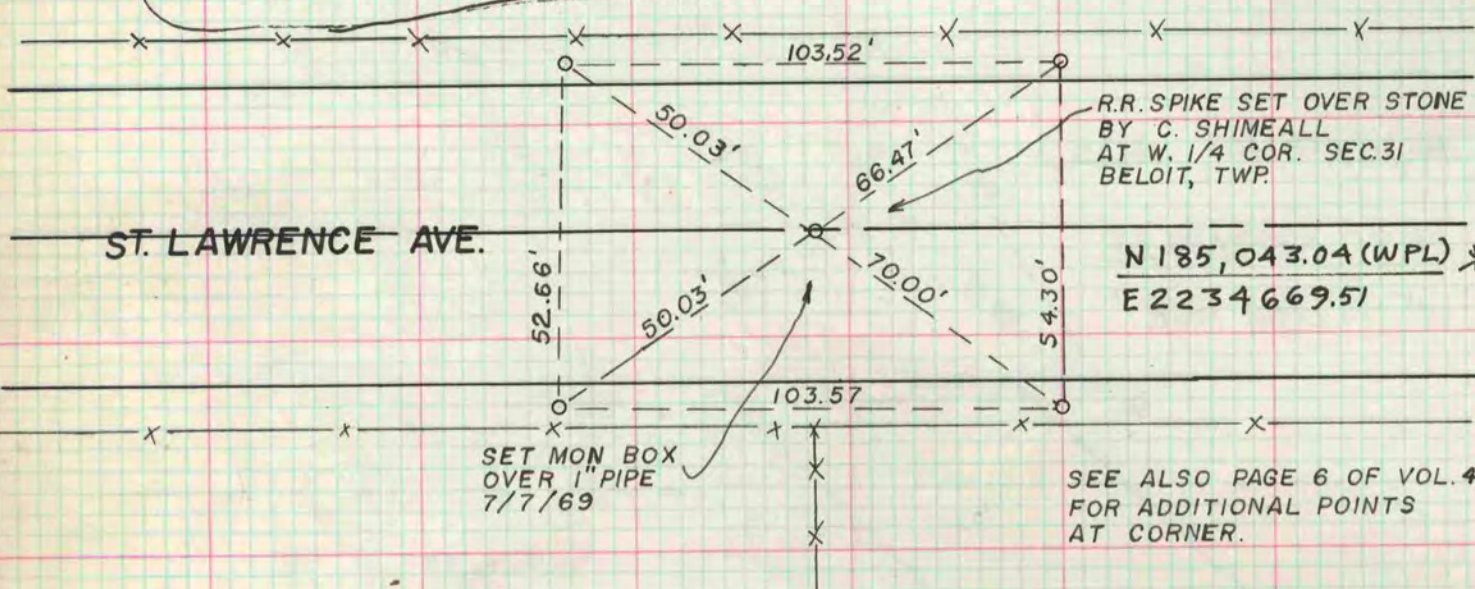


2/22/69

JMS  
TM  
GB

NOTE: ALL REFERENCES 1" PIPES

COPIED FROM BELOIT REC  
12/11/75 DAB PG 400 BELOIT REC

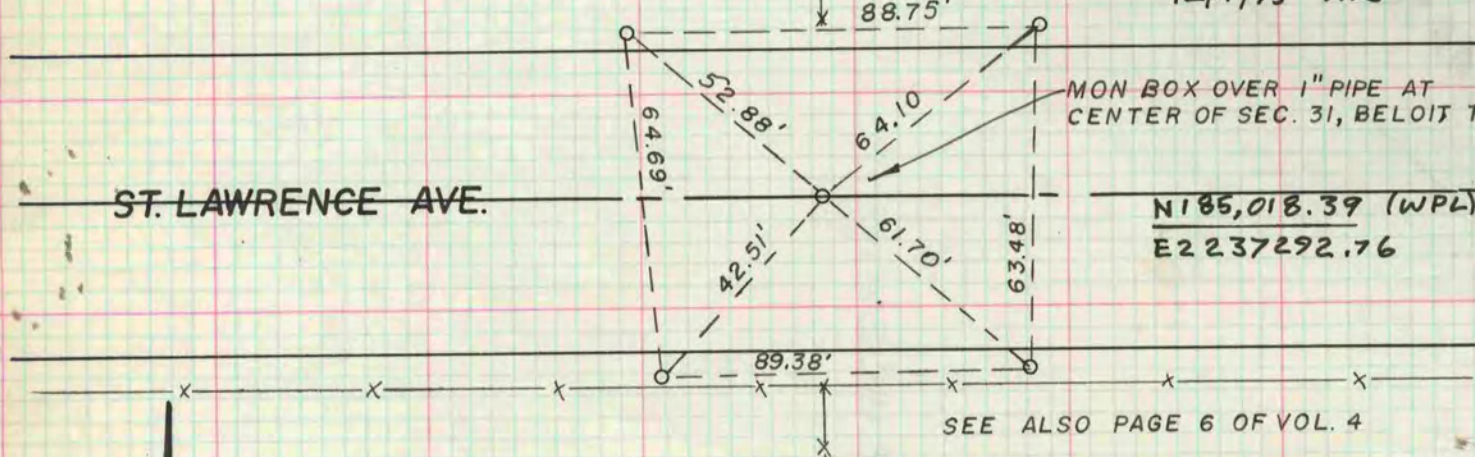


N 185,043.04 (WPL) \*  
E 2234669.51

SET MON BOX  
OVER 1" PIPE  
7/7/69

SEE ALSO PAGE 6 OF VOL. 4  
FOR ADDITIONAL POINTS  
AT CORNER.

\*COPIED FROM BELOIT REC  
12/11/75 DAB



N 185,018.39 (WPL) \*  
E 2237292.76

SEE ALSO PAGE 6 OF VOL. 4

