

# VOL. 5 PLAT AND RECORD

COUNTY BUILDING  
CITY OF JANESVILLE

Of a Survey on Section 24 T 3 N. R. 10 E. of the 4 P. M. in MAGNOLIA Township

Rock County, Wisconsin, made OCTOBER the 7<sup>th</sup> 1974

I hereby certify that the following is a correct record of said survey as made by me.

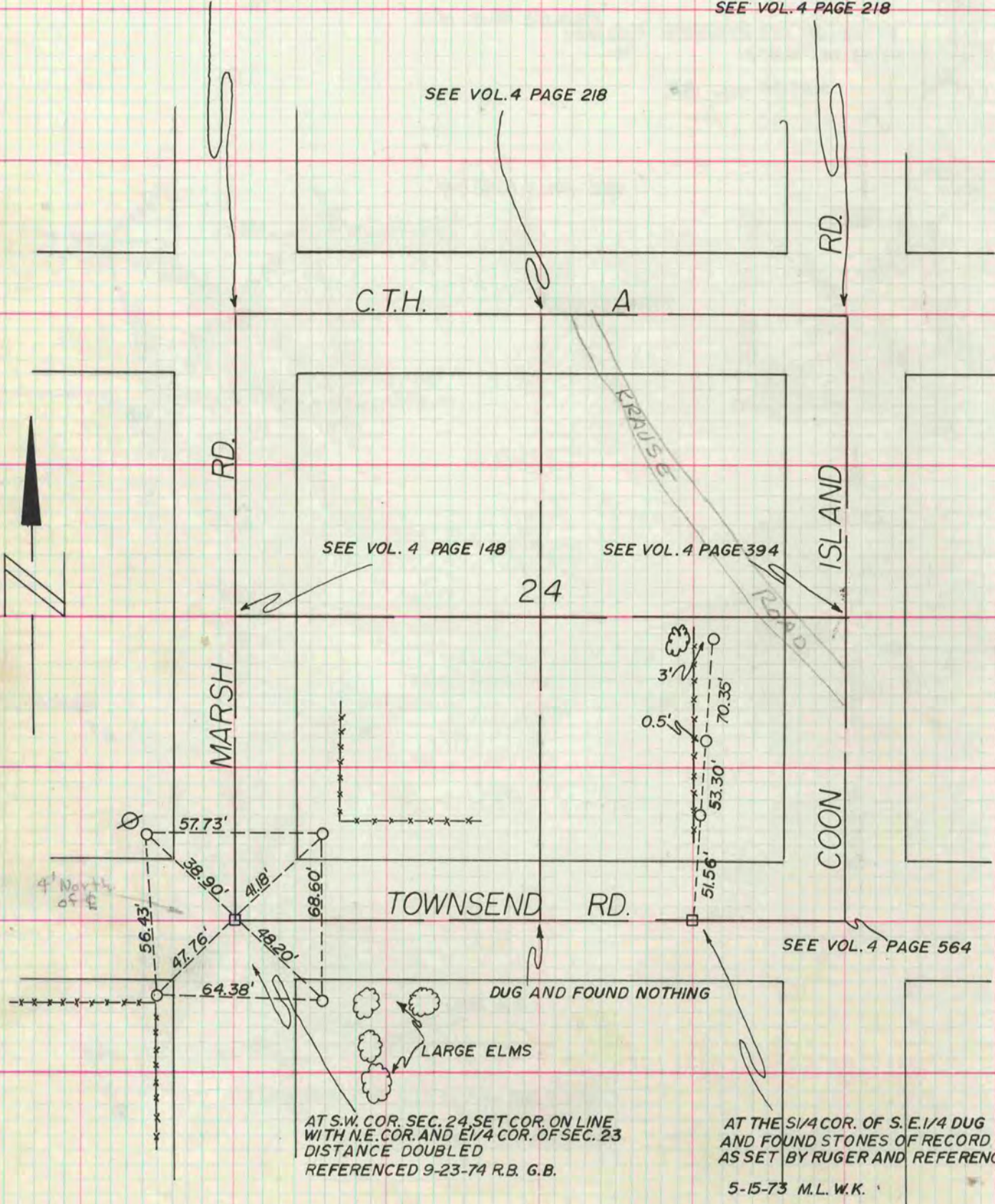
*Hugh J. Lee*  
County Surveyor.

**MICROFILMED**

AT N.W. COR. SEC. 24, SET ALUM.  
MON. 9-26-74 R.B. G.B. J.L.  
REFERENCES VOL. 4 PAGE 218

SEE VOL. 4 PAGE 218

SEE VOL. 4 PAGE 218



AT S.W. COR. SEC. 24 SET COR. ON LINE  
WITH N.E. COR. AND E 1/4 COR. OF SEC. 23  
DISTANCE DOUBLED  
REFERENCED 9-23-74 R.B. G.B.

AT THE S 1/4 COR. OF S.E. 1/4 DUG  
AND FOUND STONES OF RECORD  
AS SET BY RUGER AND REFERENCED  
5-15-73 M.L. W.K.