

COUNTY BUILDING
CITY OF JANESVILLE

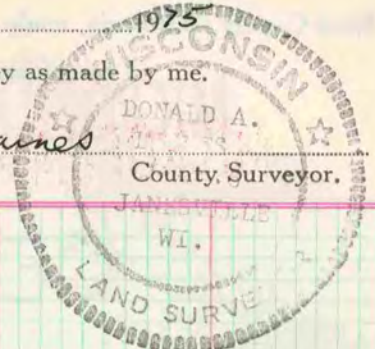
Of a Survey on Section 14 T 2N R 101 E. of the 4 P. M. in SPRING VALLEY Township

Rock County, Wisconsin, made OCTOBER the 14

I hereby certify that the following is a correct record of said survey as made by me.

MICROFILMED

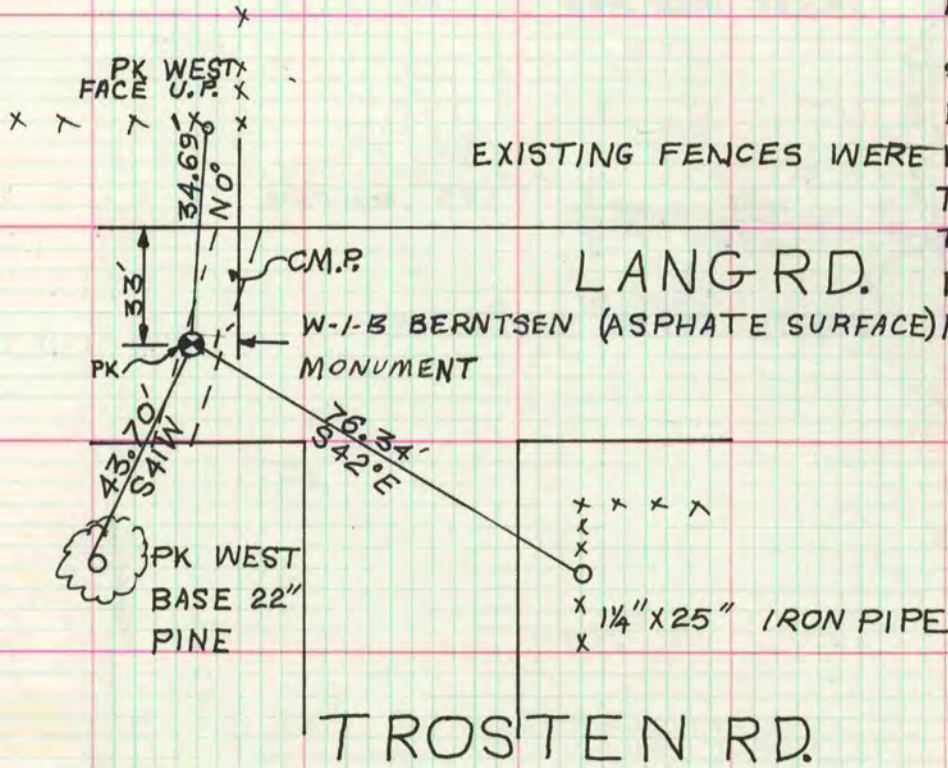
Donald Baines



NW COR SEC 14

DUG 3X7X9 HOLE HIT CULVERT
FOUND NOTHING

SEE PG. 90. AT THE N 1/16 COR THE
DISTANCES NORTH AND SOUTH TO
EXISTING FENCES WERE IN AGREEMENT WITH RECORD DISTANCES
THIS WAS USED FOR ESTABLISHING
THE NORTH LINE, THE RECORD
DISTANCE FROM THE N 1/4 COR SEC
14 WAS USED TO SET THE NW COR.



N 1/16 COR OF NW 1/4

