

PLAT AND RECORD VOL. 5 105

COUNTY BUILDING
CITY OF JANESVILLE

Of a Survey on Section 17 T 2 N R 12 E. of the 4 P. M. in ROCK Township

Rock County, Wisconsin, made DECEMBER the 3

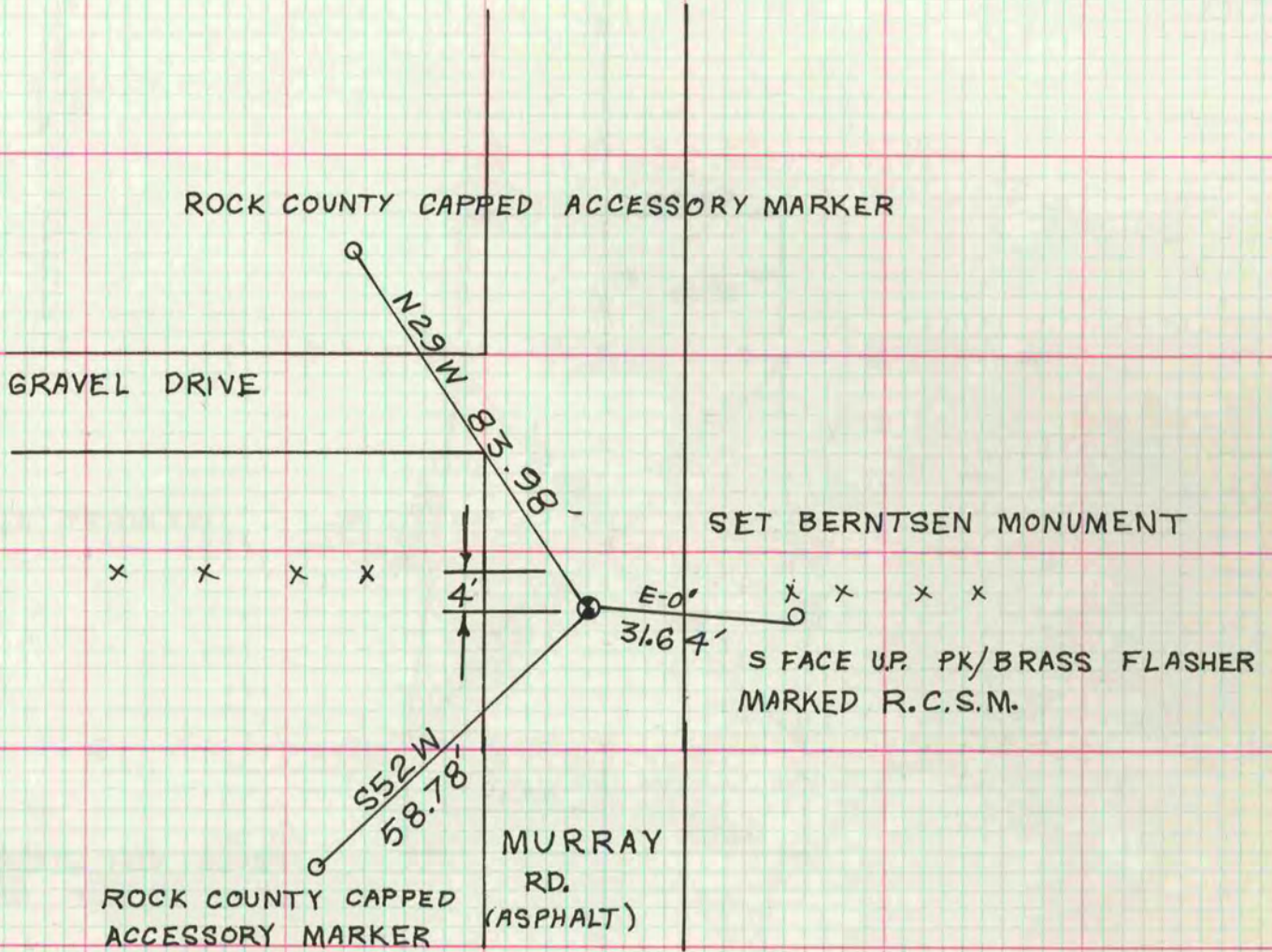
I hereby certify that the following is a correct record of said survey as made by me

MICROFILMED

Donald Baines



SW COR



ORIGINAL CORNER MONUMENT AND ACCESSORY MONUMENTS WERE REMOVED BY ROAD CONSTRUCTION. USED CSM VOL 4 PG 161 AND CSM VOL 4 PG 289 TO RESET COR.

