

PLAT AND RECORD

COUNTY BUILDING
CITY OF JANESVILLE

Of a Survey on Section 22 T 3 R 14 E. of the 4 P. M. in JOHNSTOWN Township

Rock County, Wisconsin, made MARCH the 3 19 75

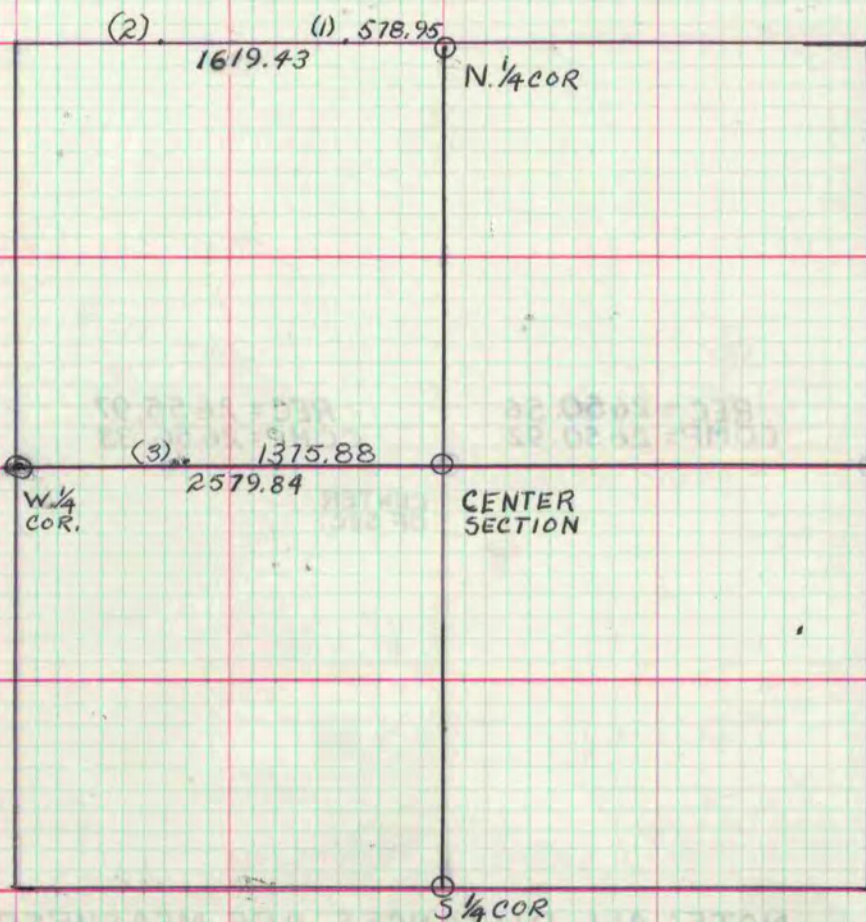
I hereby certify that the following is a correct record of said survey as made by me.

MICROFILMED

Alto J. Schroeder

County Surveyor.

By HLCOMBS



NOTE: ALL DISTANCES WERE MEASURED WITH E.D.M.

- NORTH 1/4 CORNER: DUG AND FOUND STONE SET BY RUGER IN 1883 (REFERENCE)
- WEST 1/4 CORNER: DUG AND FOUND PIPE AND 4 HARD HEADS SET BY KERCH IN 1908
- SOUTH 1/4 CORNER: DUG AND FOUND CAST IRON MONUMENT
- CENTER OF SEC: DUG AND FOUND GAS PIPE AND STONE SET BY KERCH IN 1908 (REFERENCED)
- (1) FOUND H.H. 15X6X3 1/2 SET BY RUGER IN 1886 (REC.=571.5 E.D.M. 578.95)
- (2) FOUND H.H. IN FENCE CORNER (REC.=1619.2 E.D.M. 1619.43)
- (3) FOUND GAS PIPE SET BY KERCH IN 1908 (REC.=1375.0 E.D.M. 1375.88)