

114  
V-5

# PLAT AND RECORD

COUNTY BUILDING  
CITY OF JANESVILLE

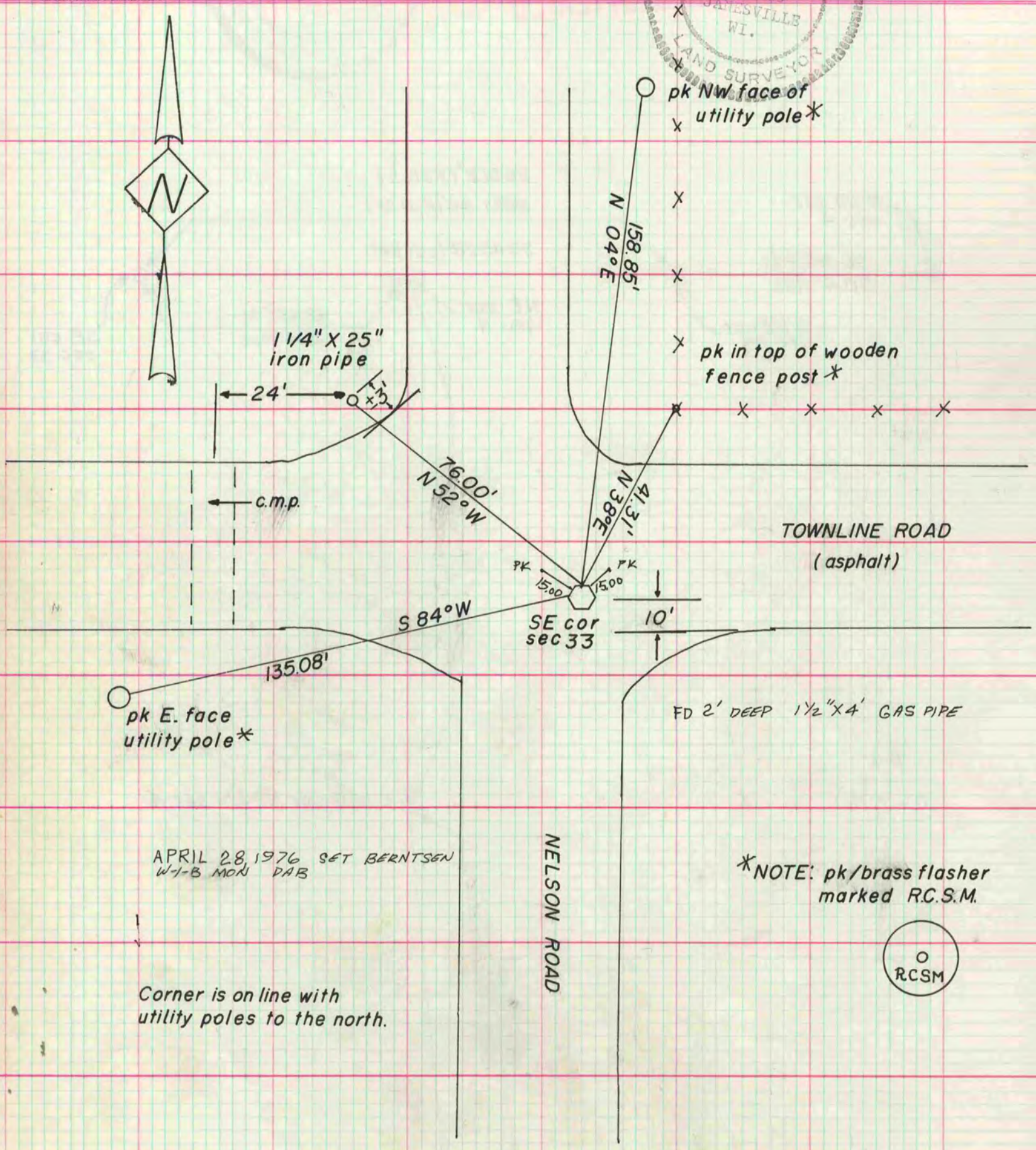
Of a Survey on Section 33 T 2 N R 10 E. of the 4 P. M. in SPRING VALLEY Township

Rock County, Wisconsin, made JANUARY the 8 1976

**MICROFILMED**

I hereby certify that the following is a correct record of said survey as made by me.

Donald Barnes  
DONALD A. County Surveyor.



APRIL 28, 1976 SET BERNTSEN  
W-1-B MON DAB

Corner is on line with  
utility poles to the north.

\*NOTE: pk/brass flasher  
marked R.C.S.M.

