

# PLAT AND RECORD

117  
V-5

COUNTY BUILDING  
CITY OF JANESVILLE

Of a Survey on Section 20 T. 2 N. R. 12 E. of the 4 P. M. in ROCK Township

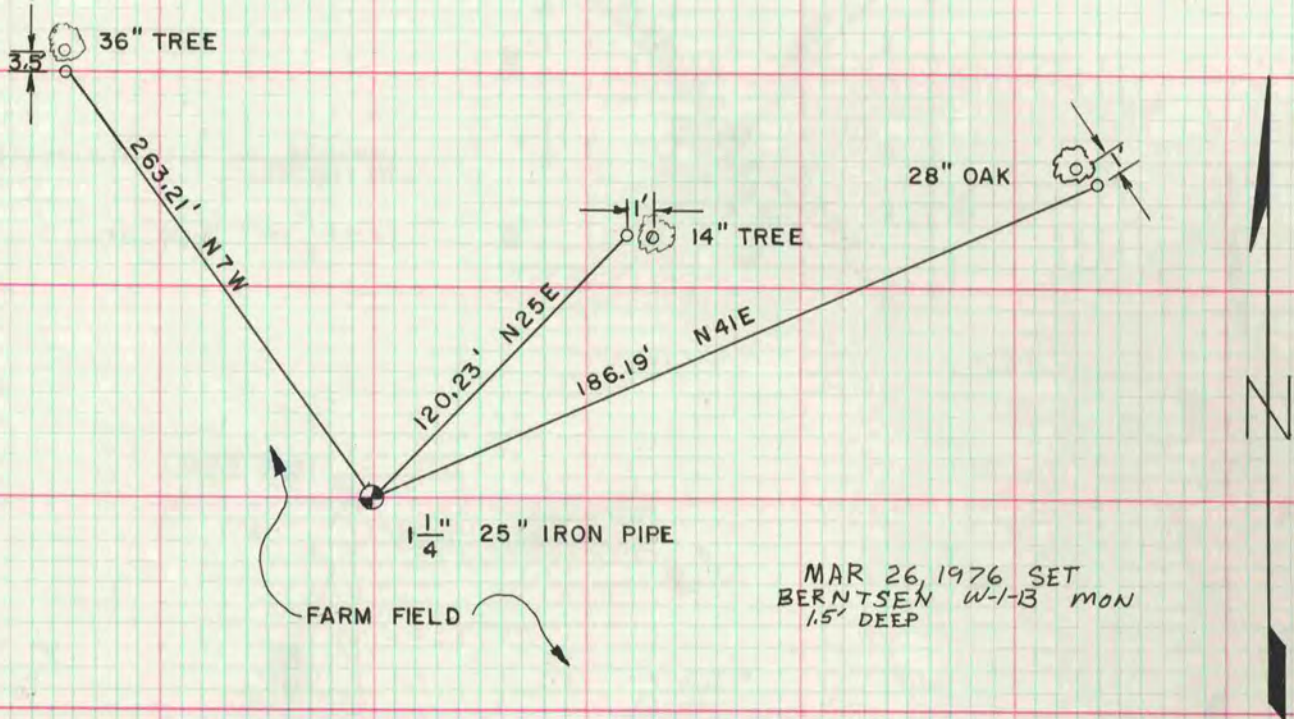
Rock County, Wisconsin, made JANUARY the 29 1976

I hereby certify that the following is a correct record of said survey as made by me.

**MICROFILMED**



SW COR.



S 1/4 COR

FOUND DISTURBED C.I. MON.

S 1/4 COR & SW COR SET USING DATA VOL 4 PG 578

