

PLAT AND RECORD

COUNTY BUILDING
CITY OF JANESVILLE

Of a Survey on Section 12 T 3 N R 13 E. of the 4 P. M. in HARMONY Township

Rock County, Wisconsin, made FEBRUARY the

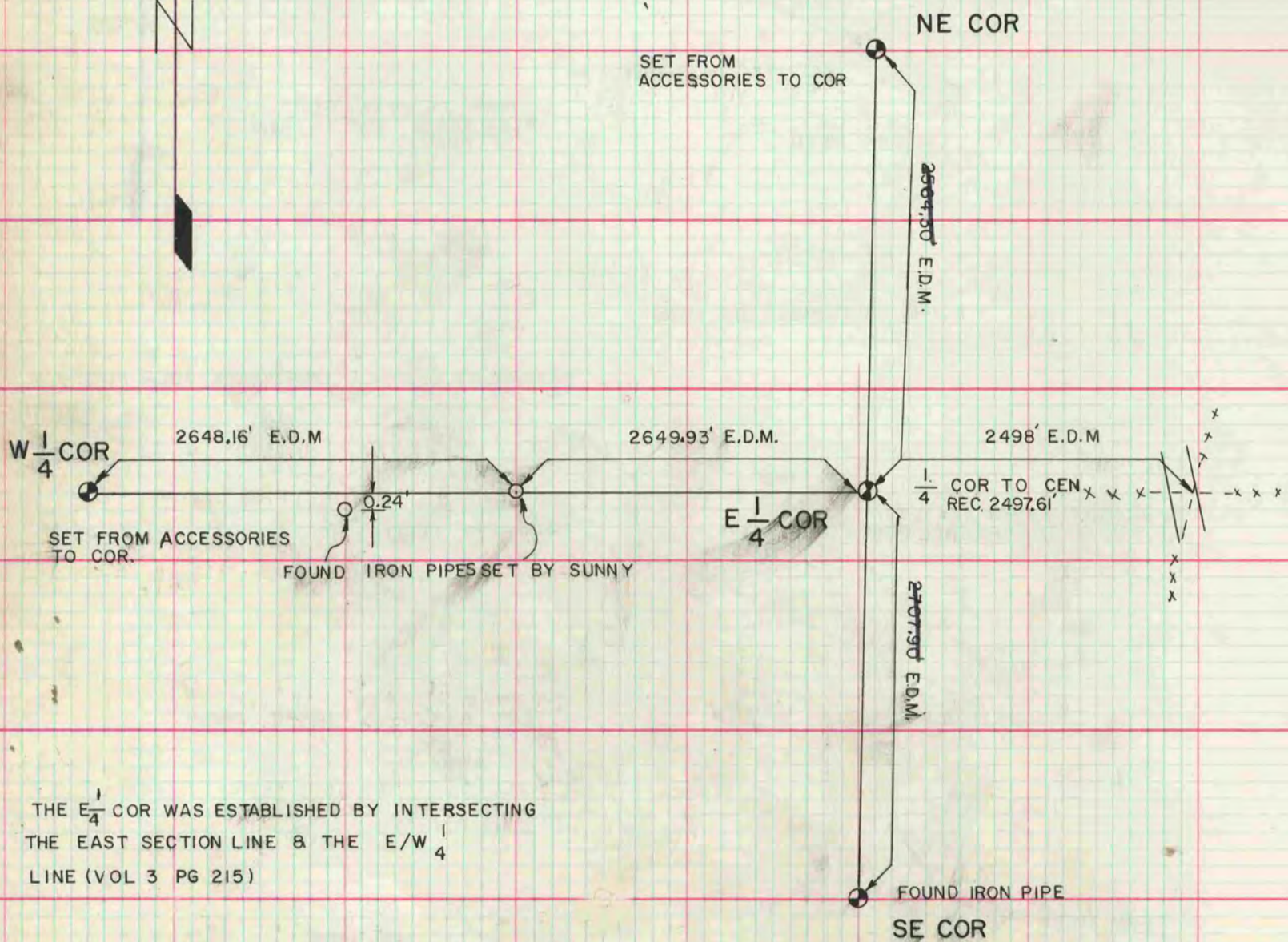
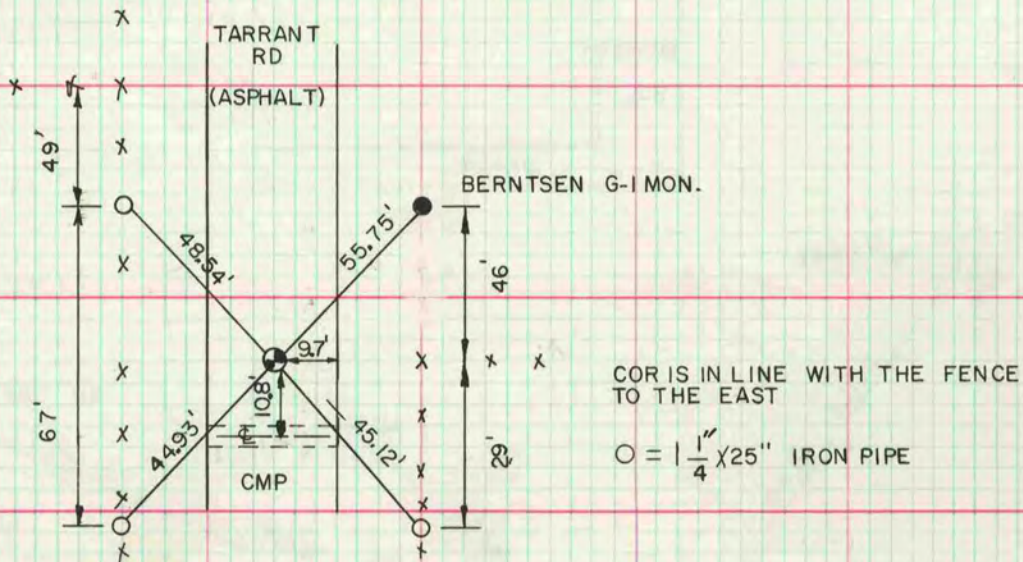
3 DONALD A. 1976

I hereby certify that the following is a correct record of said survey as made by me.



MICROFILMED

E $\frac{1}{4}$ COR



THE E $\frac{1}{4}$ COR WAS ESTABLISHED BY INTERSECTING THE EAST SECTION LINE & THE E/W $\frac{1}{4}$ LINE (VOL 3 PG 215)