

PLAT AND RECORD

181

V-5

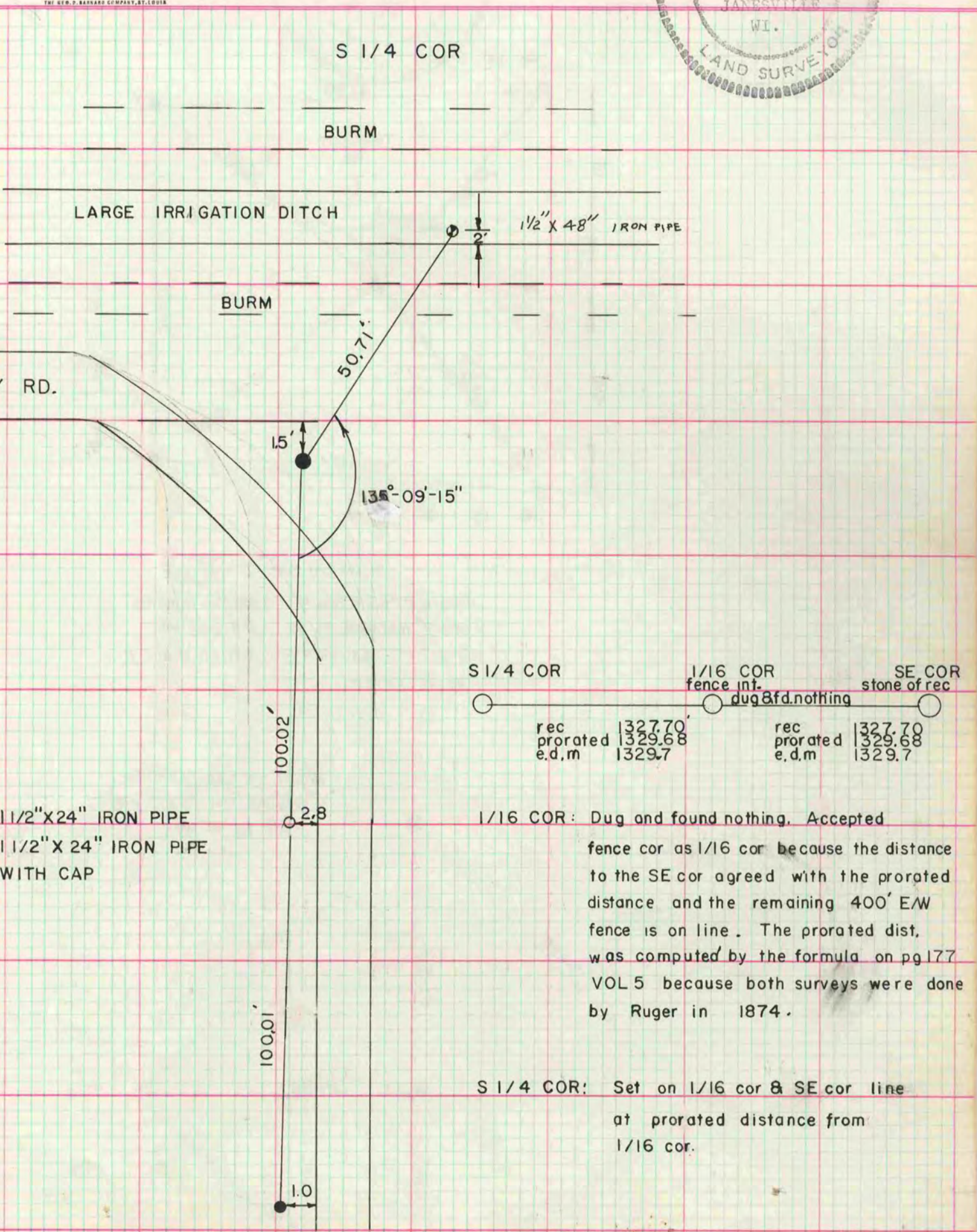
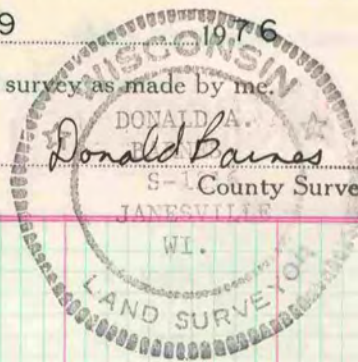
COUNTY BUILDING
CITY OF JANESVILLE

Of a Survey on Section 31 T. 4 R. 11 E. of the 4 P. M. in PORTER Township

Rock County, Wisconsin, made JULY 9 the 1916

I hereby certify that the following is a correct record of said survey as made by me

MICROFILMED



- 1 1/2" X 24" IRON PIPE
- 1 1/2" X 24" IRON PIPE WITH CAP

1/16 COR: Dug and found nothing. Accepted fence cor as 1/16 cor because the distance to the SE cor agreed with the prorated distance and the remaining 400' E/W fence is on line. The prorated dist. was computed by the formula on pg 177 VOL 5 because both surveys were done by Ruger in 1874.

S 1/4 COR: Set on 1/16 cor & SE cor line at prorated distance from 1/16 cor.