

PLAT AND RECORD

COUNTY BUILDING
CITY OF JANESVILLE

183
V-5

Of a Survey on Section 13 T 4 N. R. 13 E. of the 4 P. M. in MILTON Township

Rock County, Wisconsin, made JULY the 15 1976

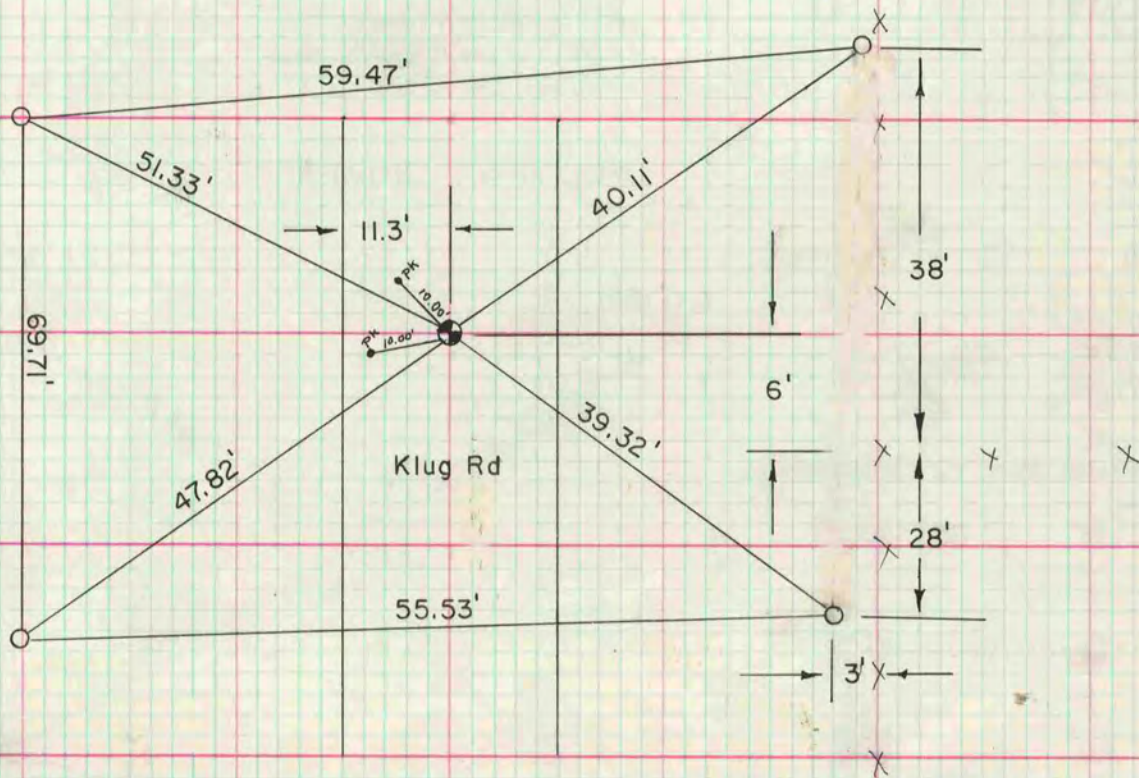
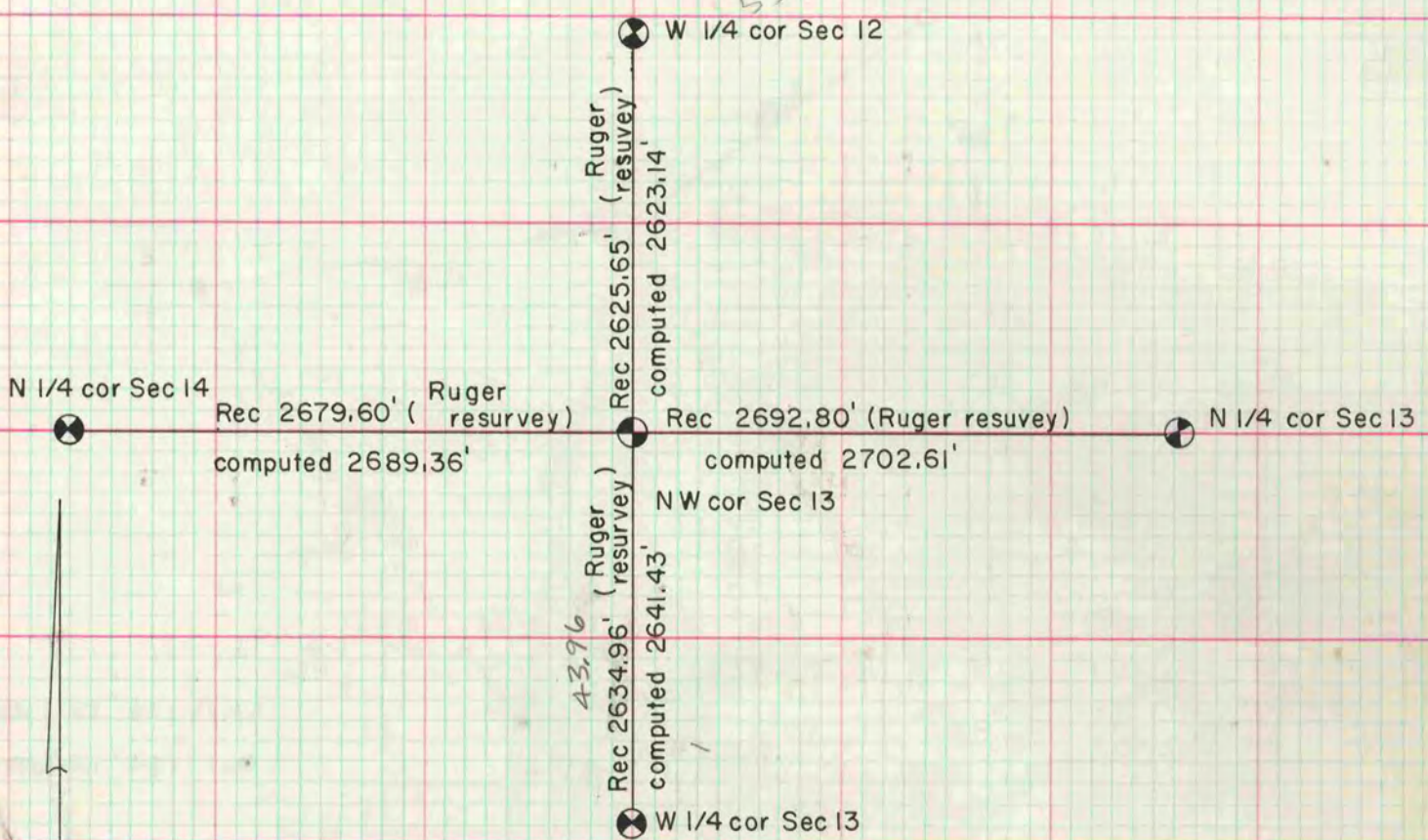
I hereby certify that the following is a correct record of said survey as made by me.

MICROFILMED



County Surveyor.

NW cor Sec 13 Dug and found nothing. Declared corner lost and set by double proportionate measurement.



O = 1" x 24" I.P.

NW cor Sec 13
Dug found nothing. Declared cor
lost set by double proportionate measurement.
set Berntsen mon