

PLAT AND RECORD

Of a Survey on Section 18 T 2 R 12 E. of the 4 P. M. in ROCK Township

Rock County, Wisconsin, made MARCH the 9 1976

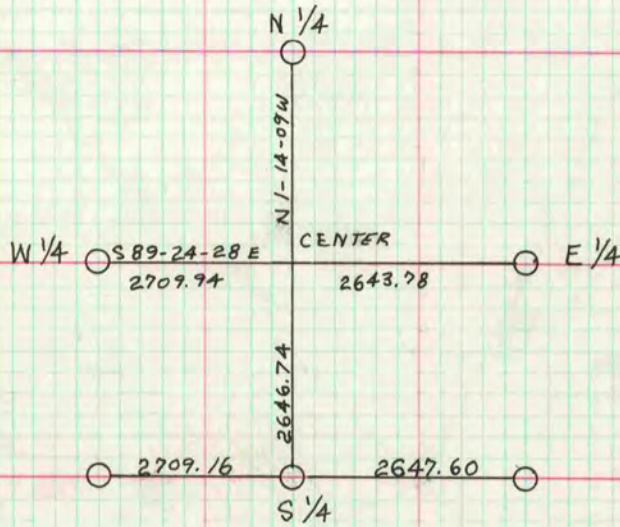
I hereby certify that the following is a correct record of said survey as made by me.

MICROFILMED

COUNTY BUILDING
CITY OF JANESVILLE

County Surveyor,

INFORMATION SUPPLIED BY NORMAN TRUE
S #1024



CENTER: SET HARRISON MON. AT INTERSECTION OF THE NORTH-SOUTH
1/4 LINE WITH THE EAST-WEST 1/4 LINE.

S 1/4 COR SET ON LINE BETWEEN THE SE & SW COR
OF SEC 18 BY PROPORTIONATE MEASUREMENT

BEARINGS ARE STATE PLANE GRID BEARINGS
DISTANCES ARE GRID DISTANCES

