

PLAT AND RECORD

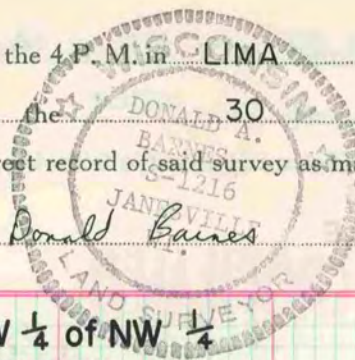
COUNTY BUILDING
CITY OF JANESVILLE

Of a Survey on Section 28 T 4 N R 14 E. of the 4 P. M. in LIMA Township

Rock County, Wisconsin, made JULY the 30 1976

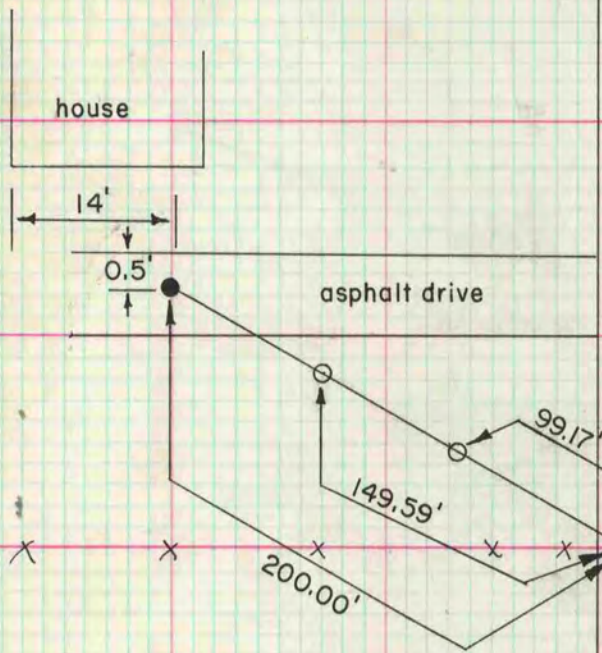
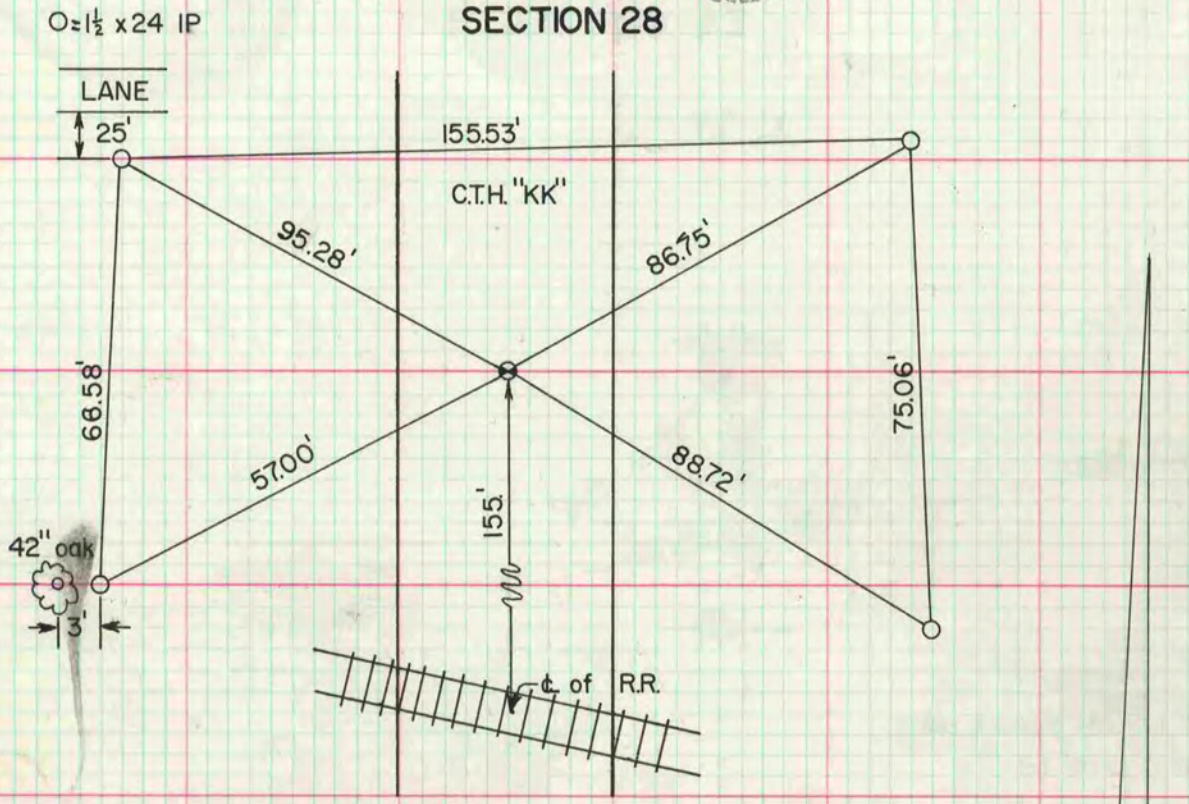
I hereby certify that the following is a correct record of said survey as made by me.

MICROFILMED



County Surveyor.

NW Cor SW 1/4 of NW 1/4 SECTION 28



C.T.H.
"KK"

NW cor Sec 28

● = pk nail

○ = 1 1/2" x 24" I.P. ON LINE