

PLAT AND RECORD

COUNTY BUILDING
CITY OF JANESVILLE

191

V-5

Of a Survey on Section **21** T **4N** R **14** E. of the 4 P. M. in **LIMA** Township

Rock County, Wisconsin, made **AUGUST** the **2** 19 **76**

I hereby certify that the following is a correct record of said survey as made by me.

MICROFILMED

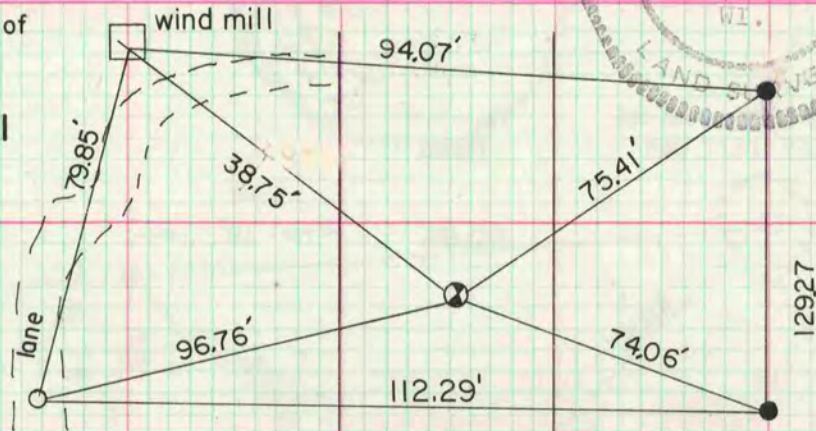


County Surveyor.

cut "X" on south side of metal base of well

NW cor Sec 21

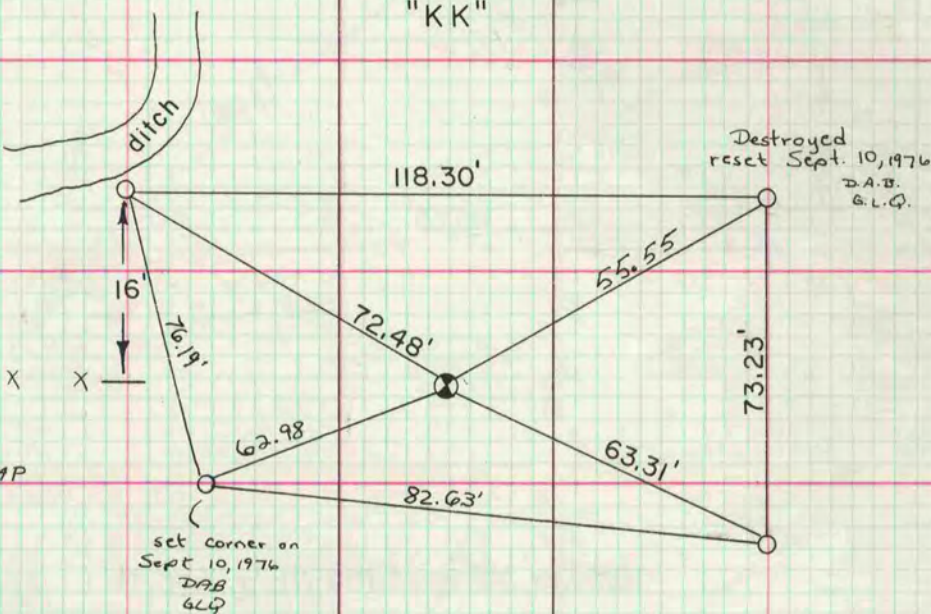
- = G-1 piston mon with cap
- = 1" x 24" I.P. with cap



C. T. H.
"KK"

W 1/4 cor Sec 21

- = 1/2" x 24" IP WITH CAP



NW cor of SW 1/4 of NW 1/4 Sec 21

- = 1/2" x 24" I.P. with cap

- = 1/2" x 24" I.P.

