

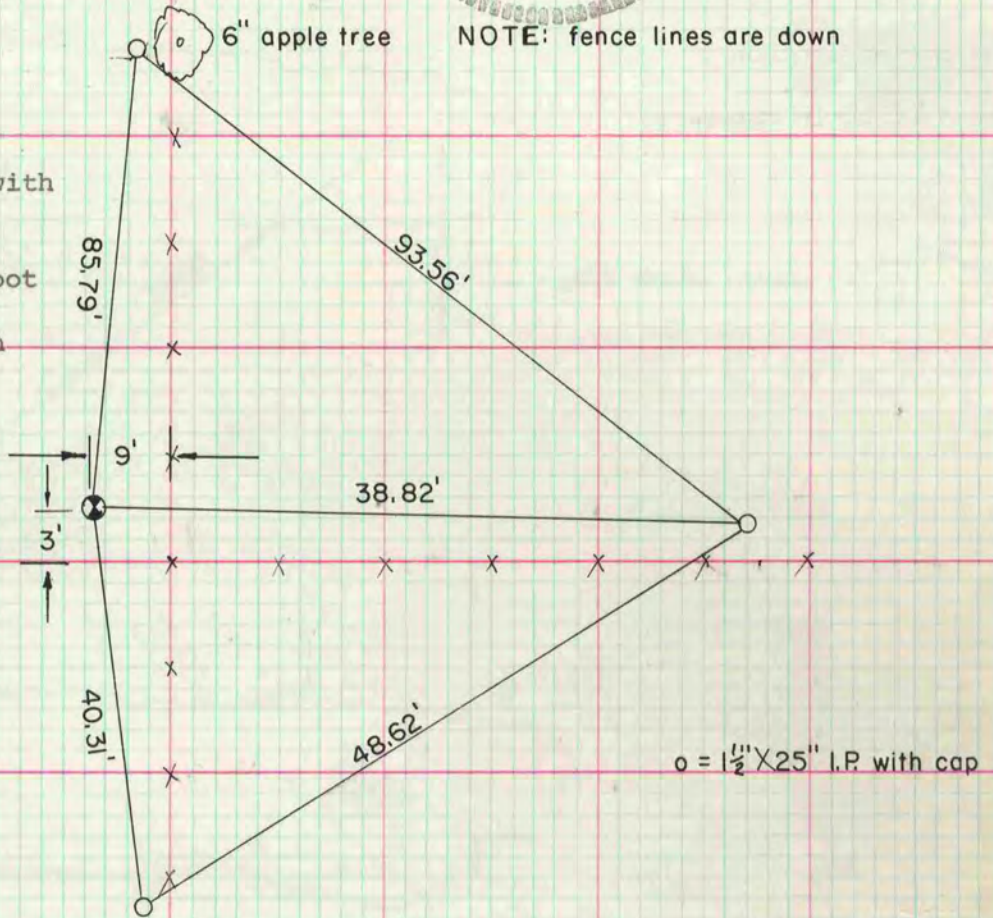
Of a Survey on Section 2 4 N. 13
13 T. 2 N. R. 12 E. of the 4 P. M. in MILTON
October ROCK Township
Rock County, Wisconsin, made October the 13 1976

I hereby certify that the following is a correct record of said survey as made by me.

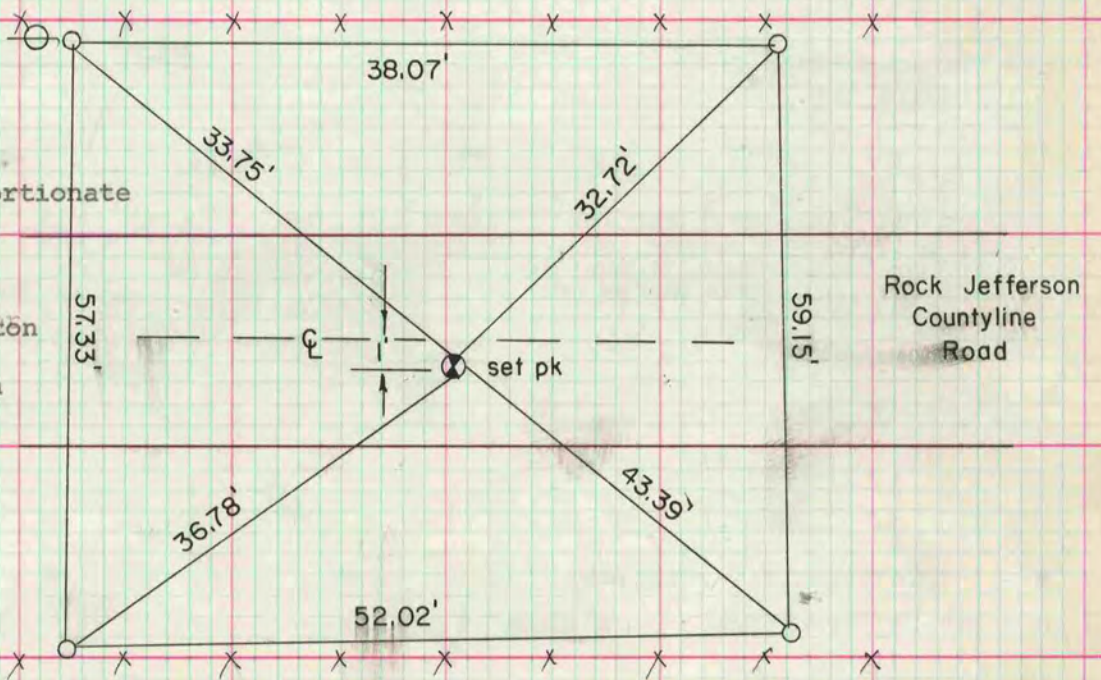


MICROFILMED

S $\frac{1}{4}$ corner section 13
Rock Twp.
Found concrete monument with
Brass cap. Top half was
broken. Reset Berntsen
W-1-B alum. monument 1 foot
deep and placed 1 $\frac{1}{2}$ "x24"
iron pipe horizontally on
top.



N $\frac{1}{4}$ corner section 2
Milton Twp.
Set corner single proportionate
distance and on line
with the NW corner
section 2 and the NE
corner section 2 Milton
Twp.
N $\frac{1}{4}$ corner fell in patch
spot of former County
Surveyor's excavation.



o = 1 $\frac{1}{2}$ "x24" iron pipe