

Of a Survey on Section 13 3 N. 10 MAGNOLIA
2 3 N. 10 MAGNOLIA
35 T. 4 N. R. 10 E. of the 4 P. M. in UNION Township

Rock County, Wisconsin, made October the 19, 20 19 76

I hereby certify that the following is a correct record of said survey as made by me.

MICROFILMED



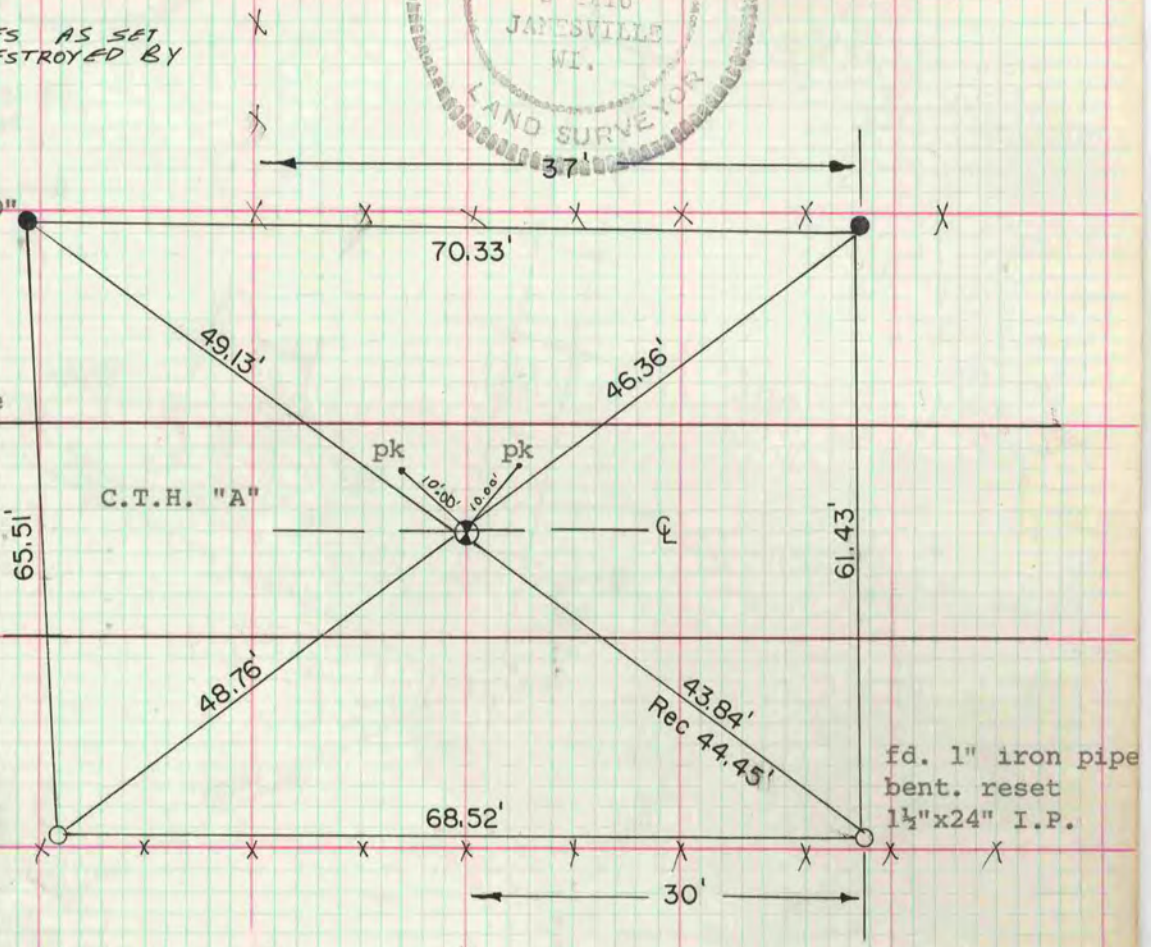
County Surveyor.

CORNER AND REF. PIPES AS SET BY H. LEE WERE DESTROYED BY RD CONSTRUCTION

S 1/4 corner section 13
Magnolia Twp.
Dug and found 6"x8"x9"
Limestone surrounded
by 3 limestones
1.5' deep

O = 1 1/2"x24" iron pipe
● = 1 1/2"x24" iron
pipe with cap

NOTE: pk's are
10.00' off sets



Set NW corner section 2
Magnolia Twp on line
with SW corner section 35 Union
Twp and S 1/4 corner section 35
Union Twp. At the SW corner of
section 35 Union found limestone
3"x6"x14" surround by 4 HH's
and tied with orange flagging

C.I. mon
1.5' deep

alum. mon at
SW cor sec 35
Union Twp.

1 1/2"x24" iron pipe
1.5' deep

