

# PLAT AND RECORD

COUNTY BUILDING  
CITY OF JANESVILLE

219  
V-15

Of a Survey on Section 15, 27 T 1 N R 13 E. of the 4 P. M. in TURTLE Township

Rock County, Wisconsin, made OCTOBER the 16 1975

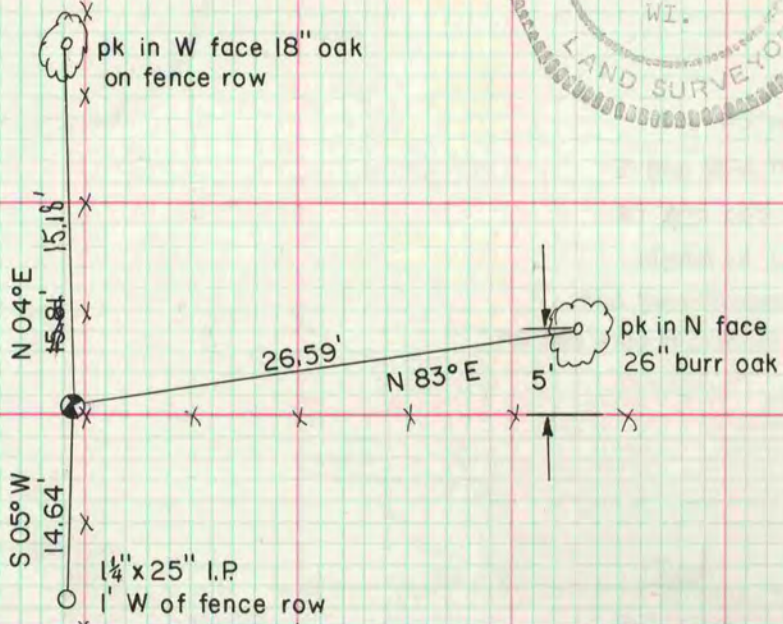
I hereby certify that the following is a correct record of said survey as made by me.

**MICROFILMED**

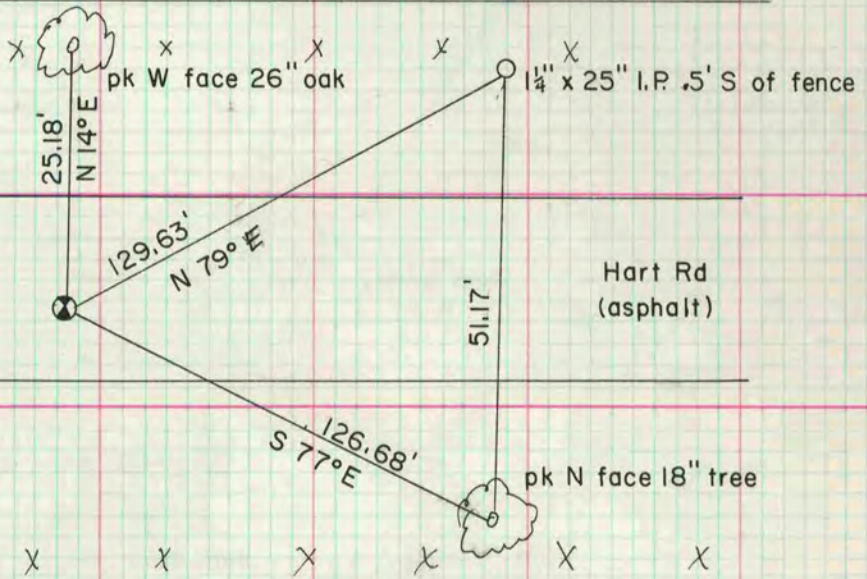


County Surveyor.

E 1/4 cor sec 27  
fd limestone rock  $\odot$  by  
4 H.H's 1' deep. stone  
size .6' x .6' x .9'. sides  
cut flat and tapered to  
the top.



W 1/4 cor sec 15  
fd C.I. mon. box  
.1' below road surface



Center cor sec 15  
fd I.P. set by C. Shimeall  
in line with N fence line

