

# PLAT AND RECORD

223

V-5-

COUNTY BUILDING  
CITY OF JANESVILLE

Of a Survey on Section 24 T. 1 R. 14 E. of the 4 P. M. in CLINTON Township

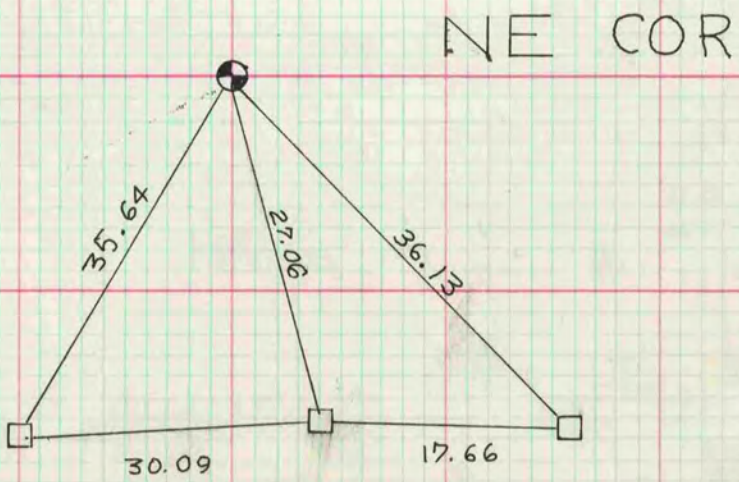
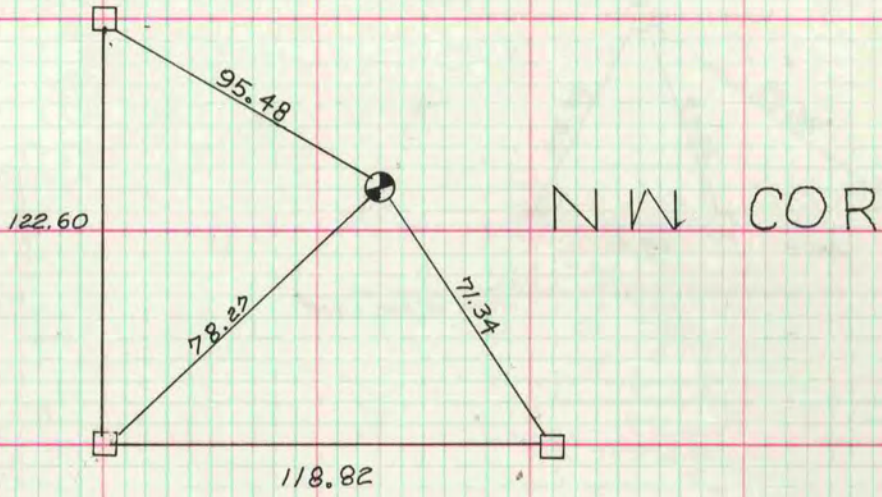
Rock County, Wisconsin, made.....the.....19.....

I hereby certify that the following is a correct record of said survey as made by me.

**MICROFILMED**

.....  
County Surveyor.

INFORMATION SUPPLIED BY STATE HIGHWAY COMMISSION



□ CONCRETE MON WITH BRASS CAP