

PLAT AND RECORD

COUNTY BUILDING
CITY OF JANESVILLE

Of a Survey on Section 5, 3 T 4 N R 12 E. of the 4 P. M. in FULTON Township

Rock County, Wisconsin, made NOV the 22-23 1976

I hereby certify that the following is a correct record of said survey as made by me.

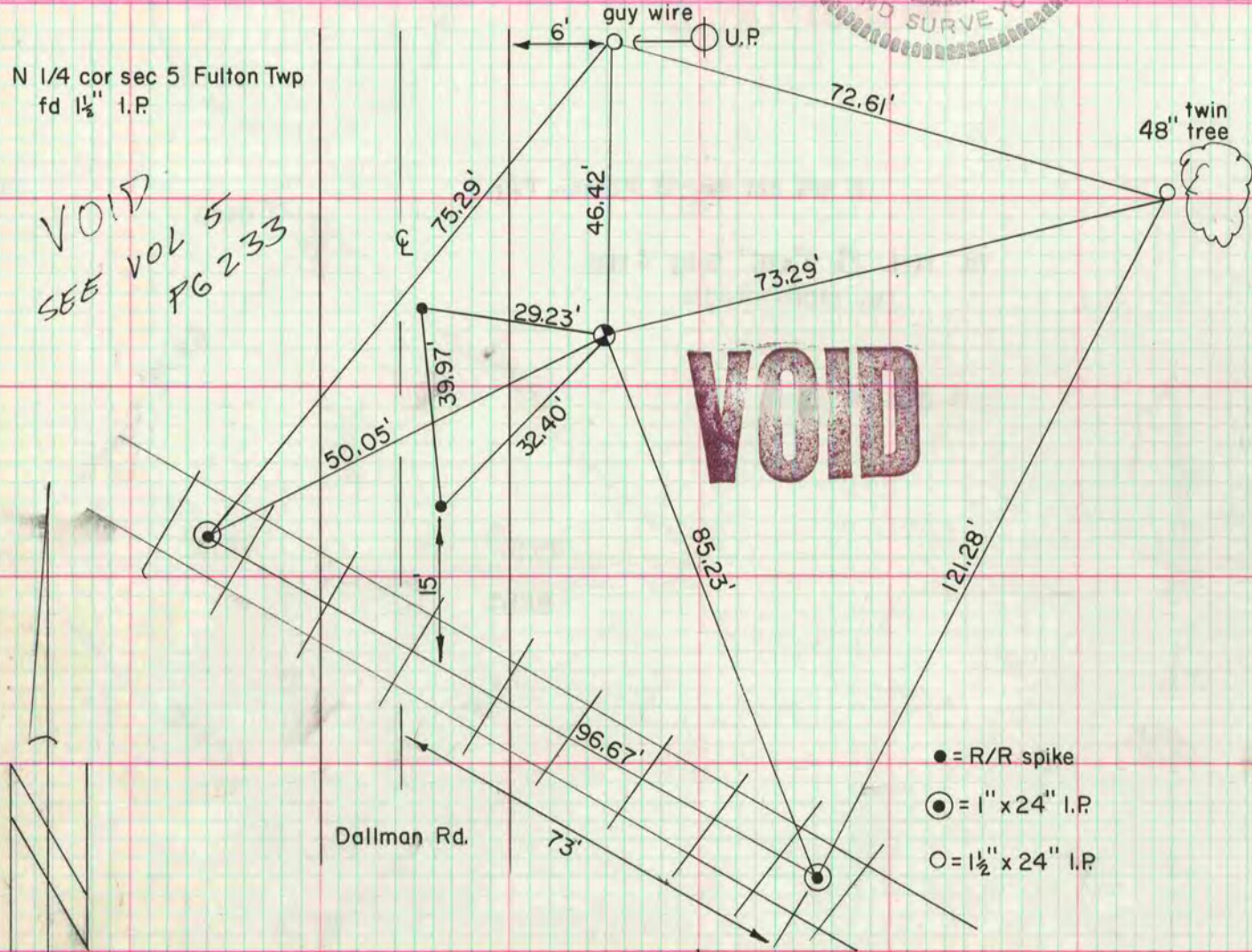
MICROFILMED



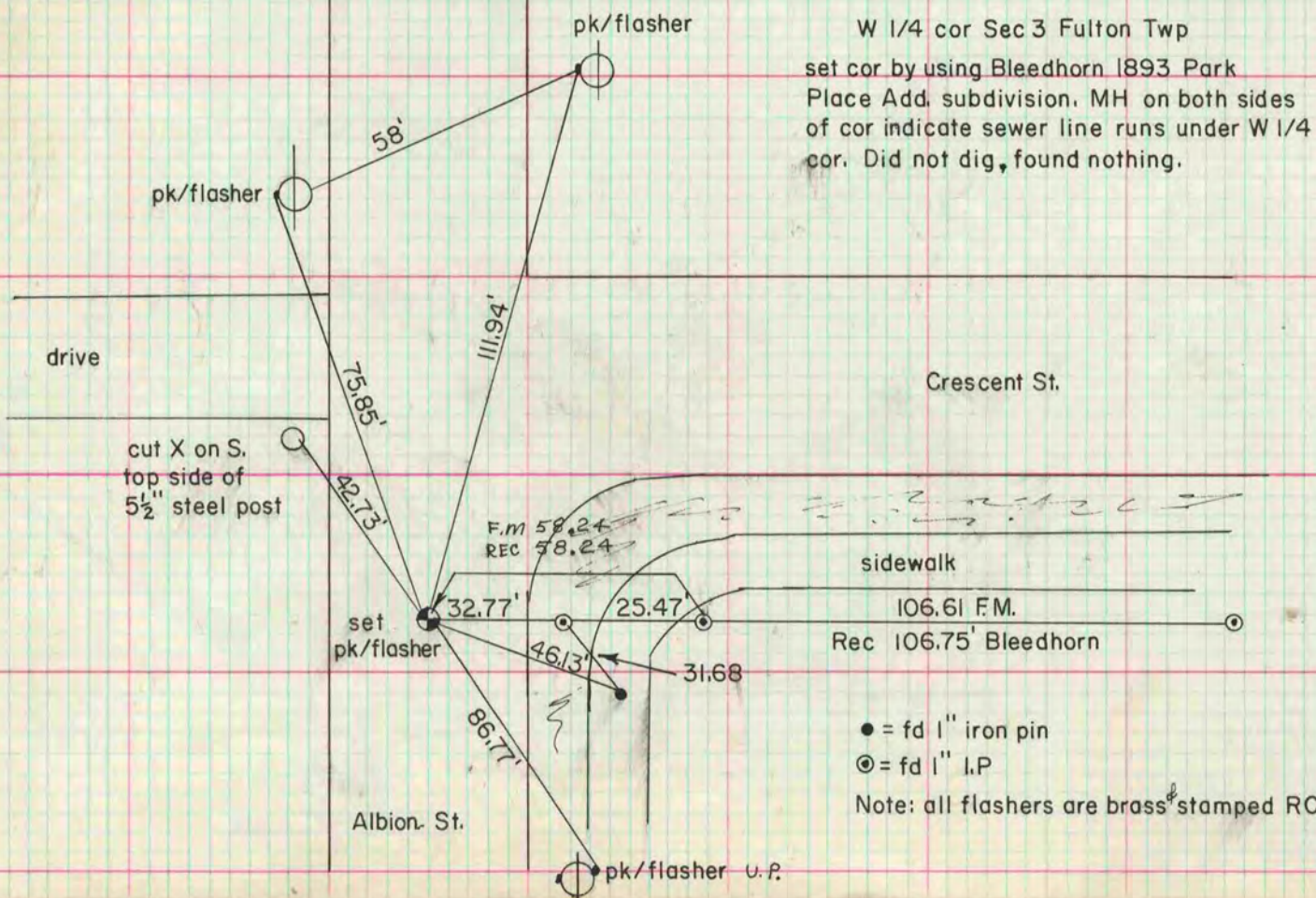
N 1/4 cor sec 5 Fulton Twp
fd 1 1/2" I.P.

VOID
SEE VOL 5
PG 233

VOID



- = R/R spike
- ⊙ = 1" x 24" I.P.
- = 1 1/2" x 24" I.P.



- = fd 1" iron pin
 - ⊙ = fd 1" I.P.
- Note: all flashers are brass stamped RCSM