

PLAT AND RECORD

COUNTY BUILDING
CITY OF JANESVILLE

V-5

Of a Survey on Section 2 T 4 N R 14 E. of the 4 P. M. in LIMA Township

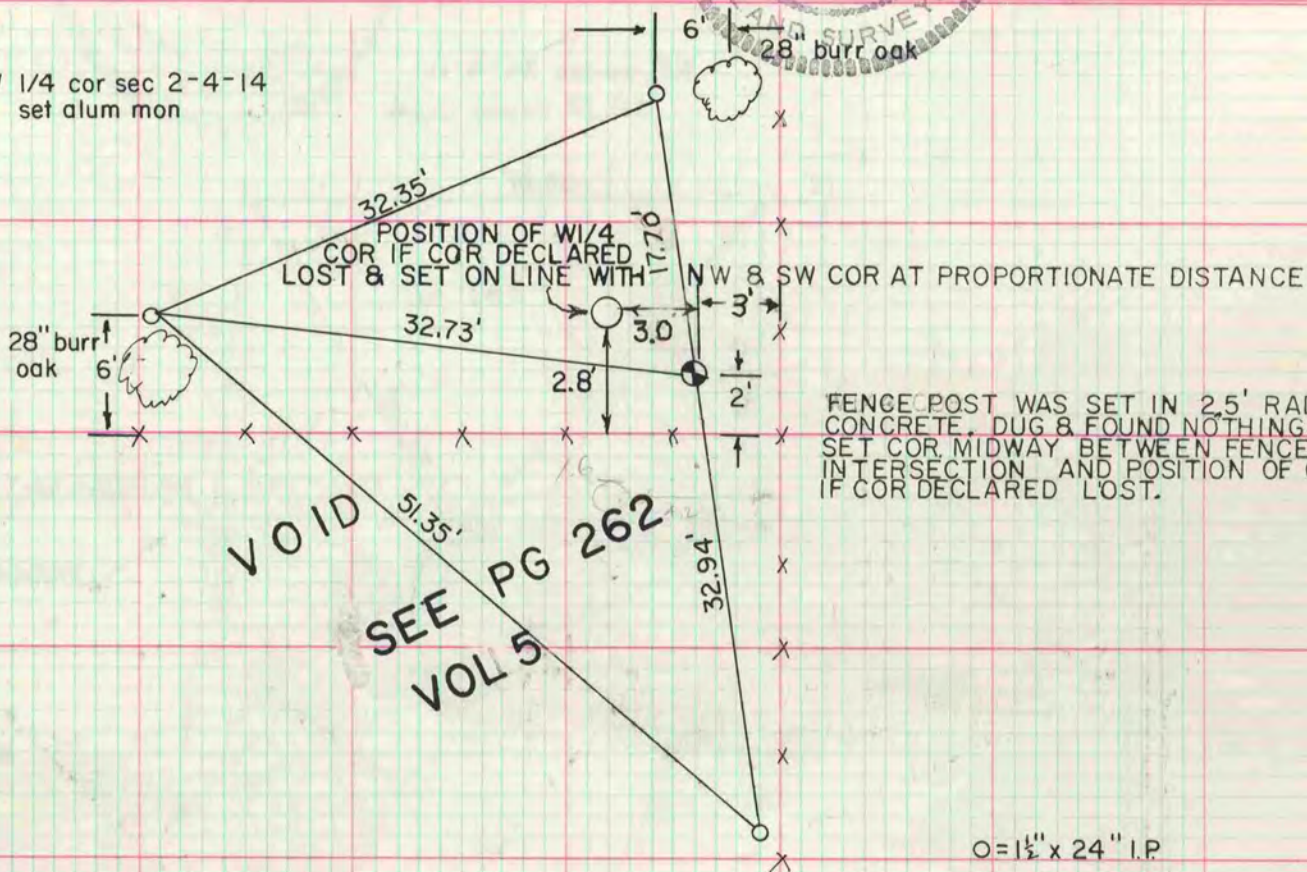
Rock County, Wisconsin, made MARCH the 16 1977

I hereby certify that the following is a correct record of said survey as made by me.



Donald Barnes
County Surveyor.

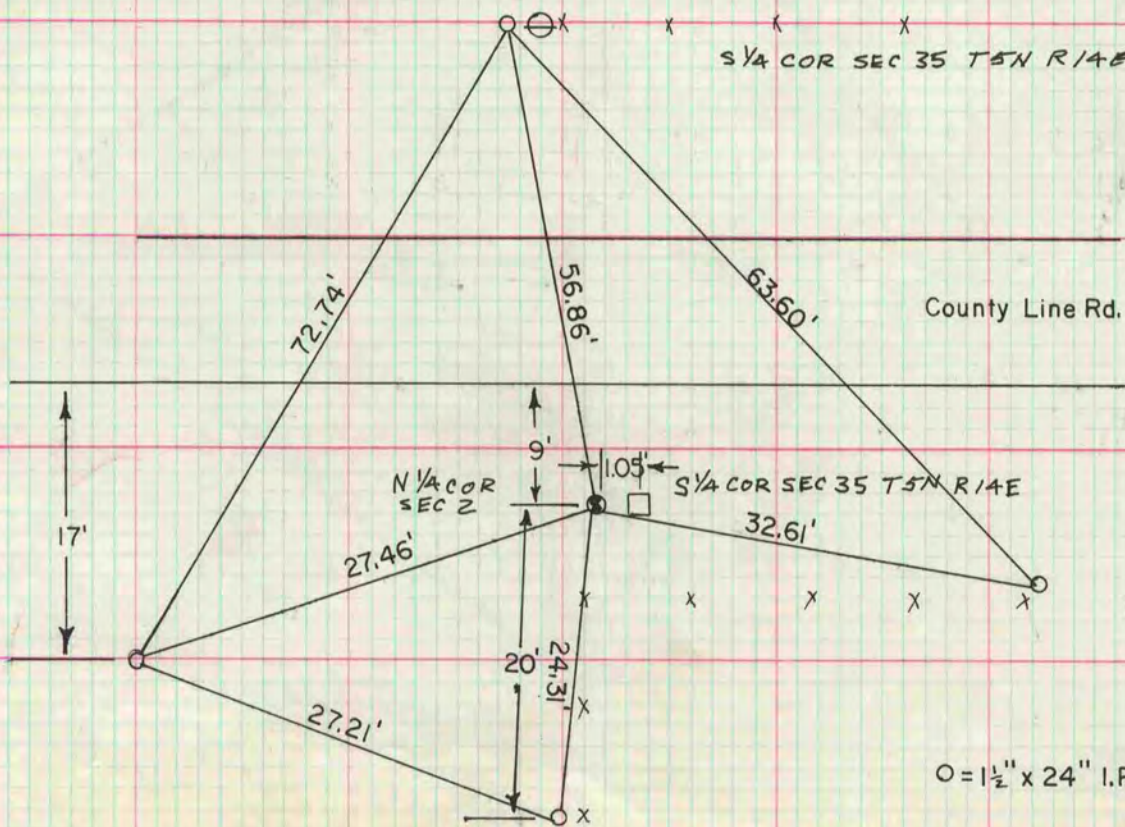
W 1/4 cor sec 2-4-14
set alum mon



O = 1 1/2" x 24" I.P.

N 1/4 cor sec 2-4-14 DUG & FOUND NOTHING
set G-1 mon with cap

S 1/4 COR SEC 35 T5N R14E FD CUT LIMESTONE



O = 1 1/2" x 24" I.P.