

PLAT AND RECORD

Of a Survey on Section 24 2 10 MAGNOLIA
 32 4 11 PORTER
 30 4 11 PORTER
 25 T 4 R 11 E. of the 4 P. M. in PORTER Township
 Rock County, Wisconsin, made MAY the 4 1977

I hereby certify that the following is a correct record of said survey as made by me.

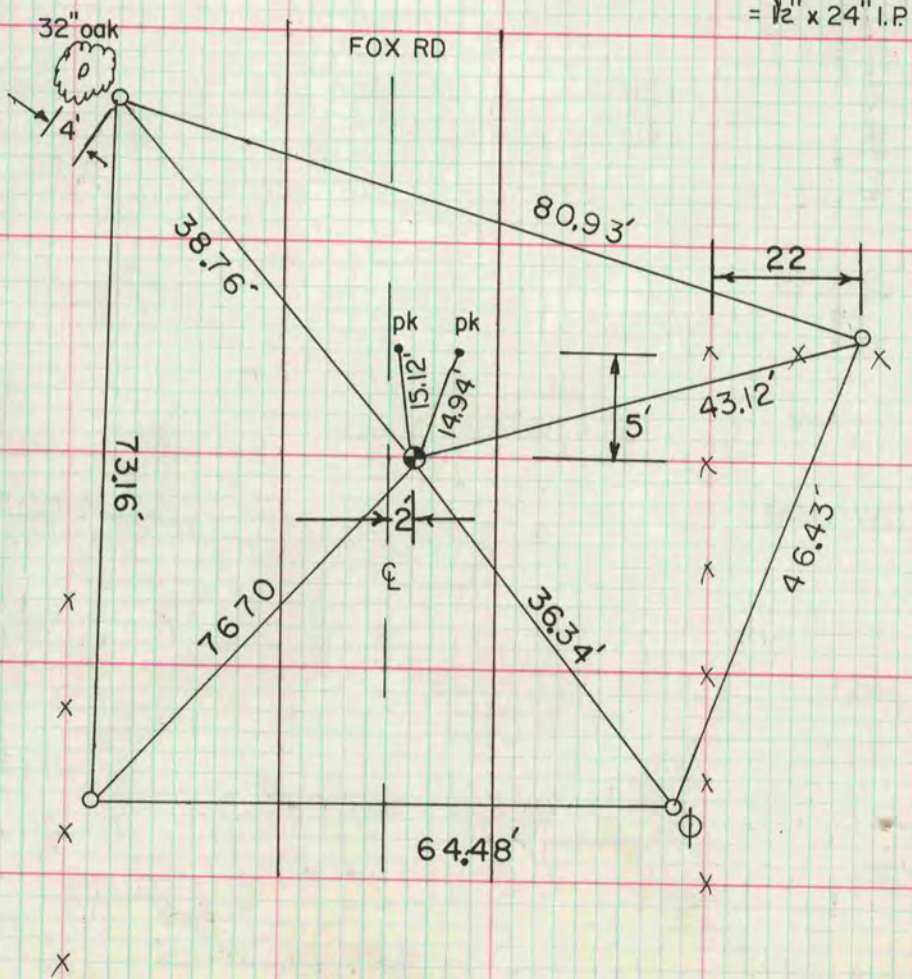


COUNTY BUILDING
 CITY OF JANESVILLE

TOWNSHIP	CORNER	SECTION	TYPE OF CORNER SET
Magnolia	N $\frac{1}{4}$	24	alum. monument
Porter	Center	30	alum. monument
Porter	E $\frac{1}{4}$	30	alum. monument
Porter	NE	32	6" C.I. monument
Porter	E $\frac{1}{4}$	32	R/R spike

W 1/4 cor sec cor 25-4-11
 dug & fd nothing
 SET at single proportion distance on
 line with NW and SW cors sec 25
 set alum mon

MICROFILMED



O = 1/2" X 25" IP