

# PLAT AND RECORD

Of a Survey on Section 13 T 3 N R 14 E. of the 4 P. M. in JOHNSTOWN Township

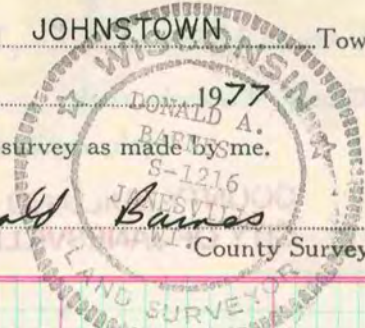
Rock County, Wisconsin, made APRIL the 22

1977

I hereby certify that the following is a correct record of said survey as made by me.

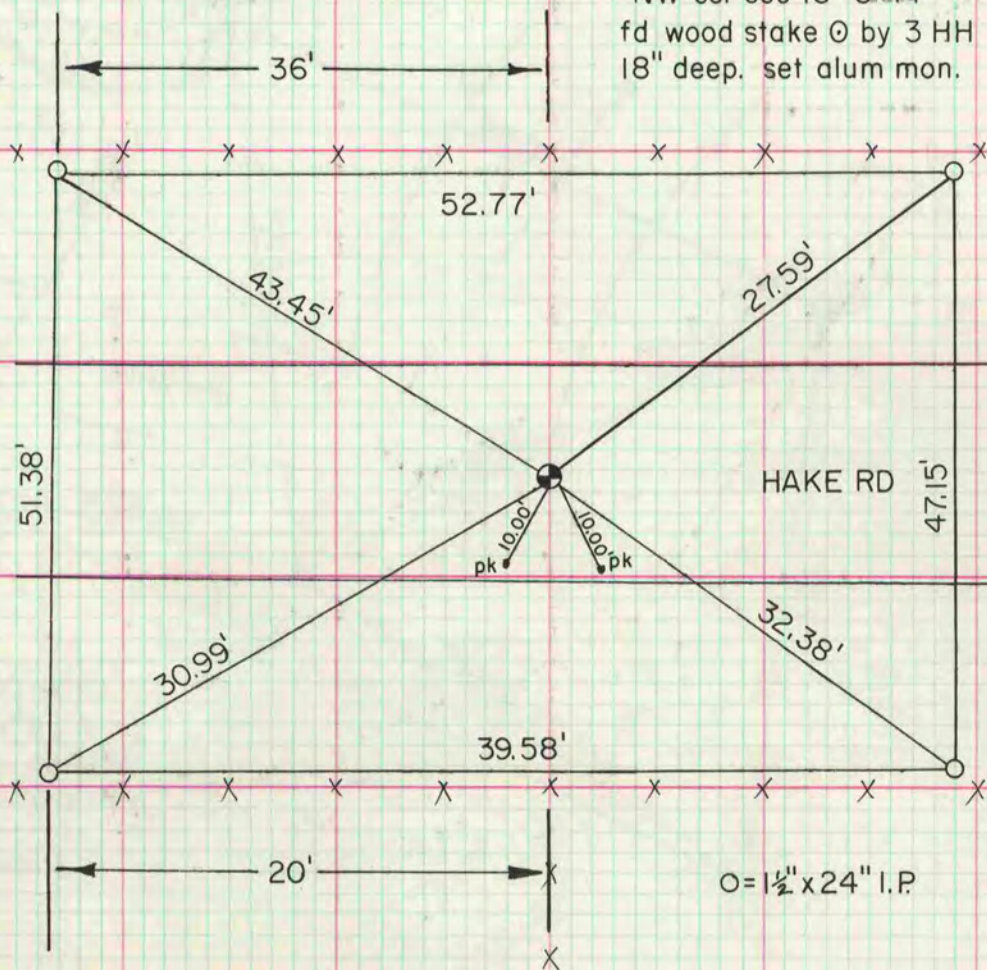
COUNTY BUILDING  
CITY OF JANESVILLE

Donald Barnes  
County Surveyor.

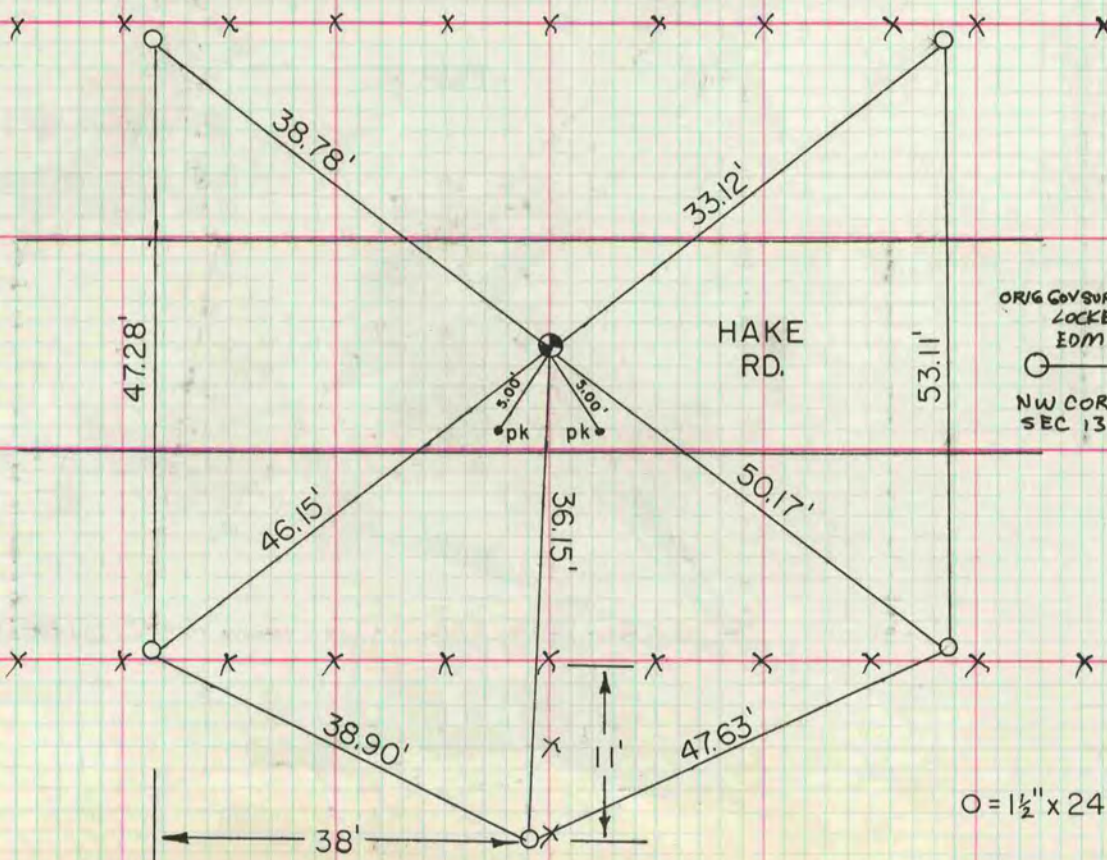


MICROFILMED

NW cor sec 13-3-14  
fd wood stake  $\odot$  by 3 HH  
18" deep. set alum mon.



N 1/4 cor sec 13-3-14  
DUG & FOUND NOTHING  
set single proportionate distance on line  
with NE and NW cors sec 13. set alum mon.



ORIG GOVSUR 2649.2 LOCKE 2657.16 EDM 2656.30	ORIG GOVSUR 2649.2 LOCKE 2654.52 EDM 2653.67
$\odot$	$\odot$
NW COR SEC 13	N 1/4 COR SEC 13      NE COR SEC 13