

# PLAT AND RECORD

VOL. 5

Of a Survey on Section 31 T 3 N R 14 E. of the 4 P. M. in JOHNSTOWN Township

Rock County, Wisconsin, made APRIL MAY the 22 12 1977

I hereby certify that the following is a correct record of said survey as made by me:

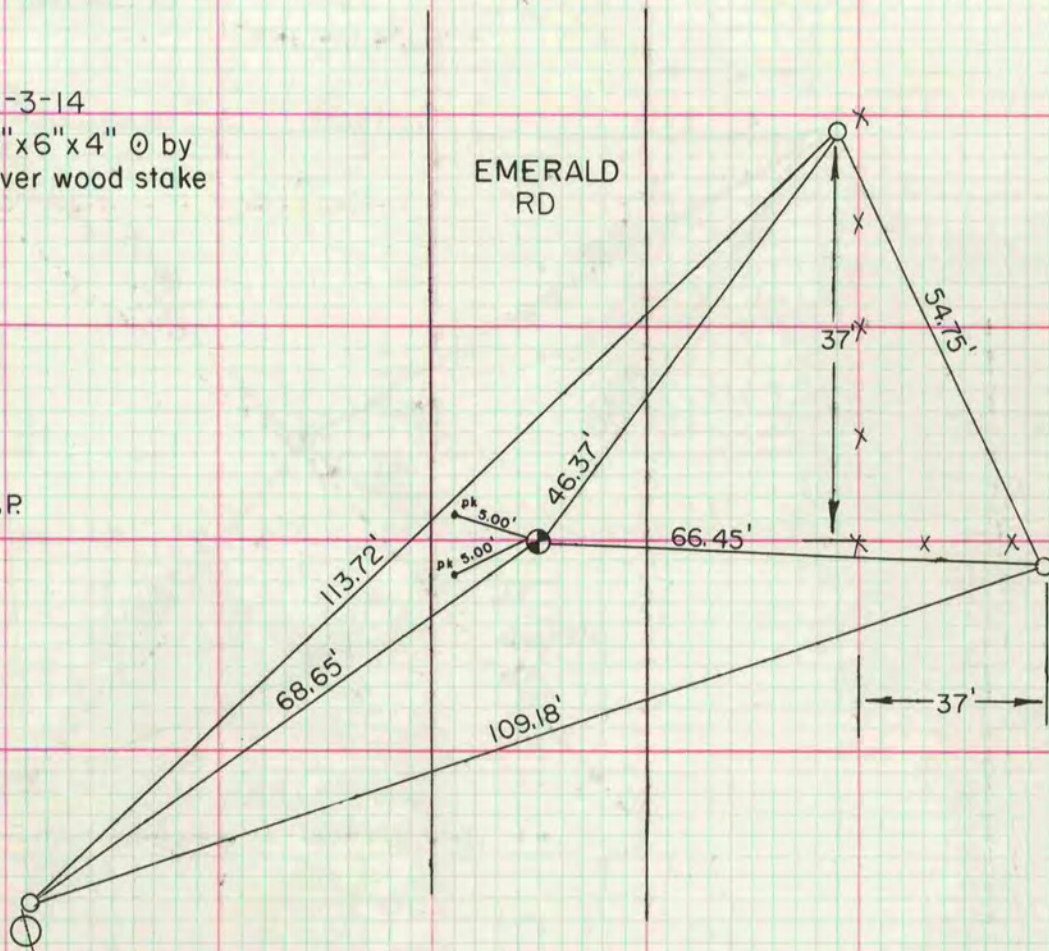
COUNTY BUILDING  
CITY OF JANESVILLE



MICROFILMED

NE cor sec 31-3-14  
fd limestone 13"x6"x4" O by  
2 limestones over wood stake  
set alum mon.

O = 1 1/2" x 24" I.P.



W 1/6 COR OF THE SW 1/4 OF SEC 17-3-14

dug hole 2.5' x 2' x 1.5' deep and fd  
nothing. Ron Combs set pk on line  
between W 1/4 cor and NW cor at  
a distance midway between the  
cors. fd pk and set  
G-1 mon.

O = 1 1/2" x 24" I.P.

