

PLAT AND RECORD

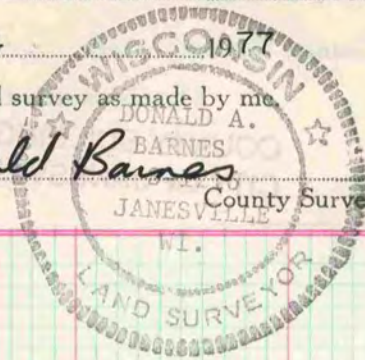
Of a Survey on Section 25 T 4 R 11 E. of the 4 P. M. in PORTER Township

Rock County, Wisconsin, made MAY the 4 1977

I hereby certify that the following is a correct record of said survey as made by me

COUNTY BUILDING
CITY OF JANESVILLE

Donald Barnes

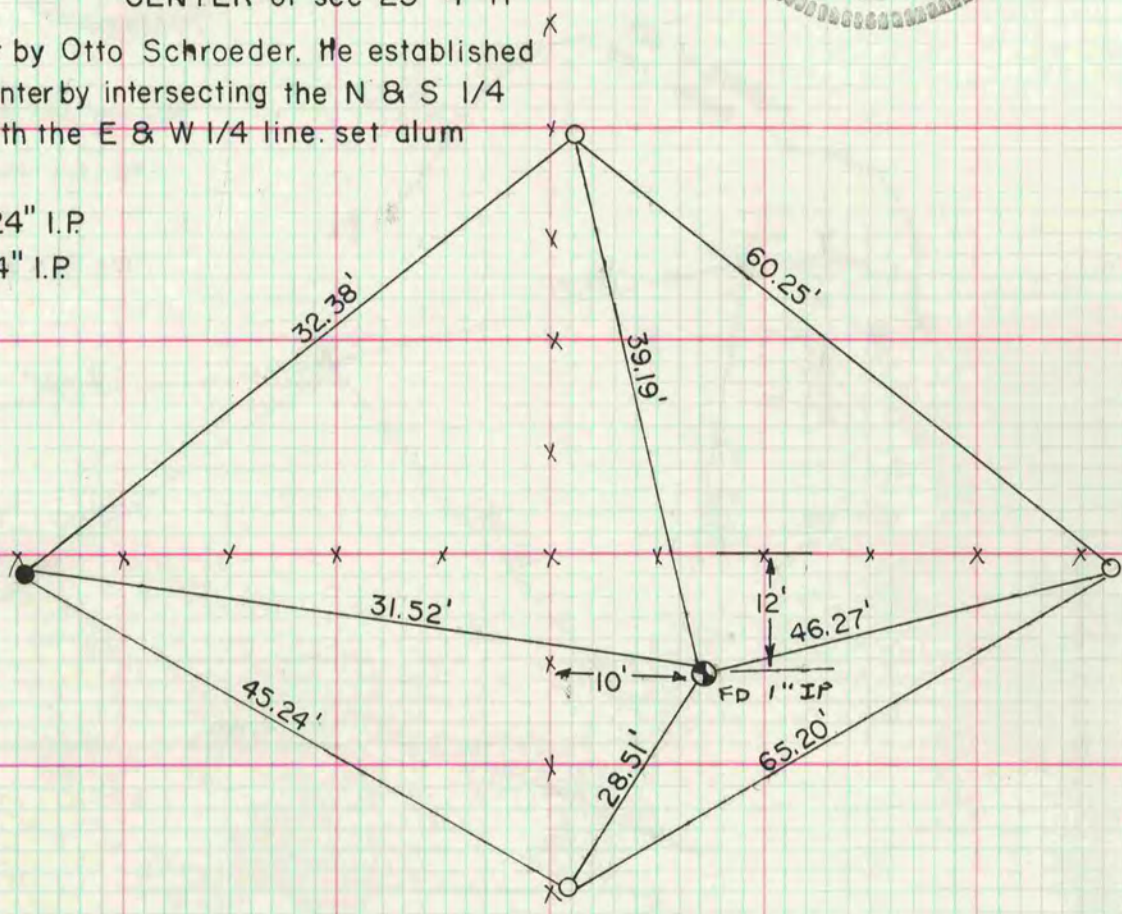


CENTER of sec 25-4-11

as set by Otto Schroeder. He established the center by intersecting the N & S 1/4 line with the E & W 1/4 line. set alum mon.

○ = 1 1/2" x 24" I.P.

● = 1" x 24" I.P.



MICROFILMED

