

CITY OF JANESVILLE

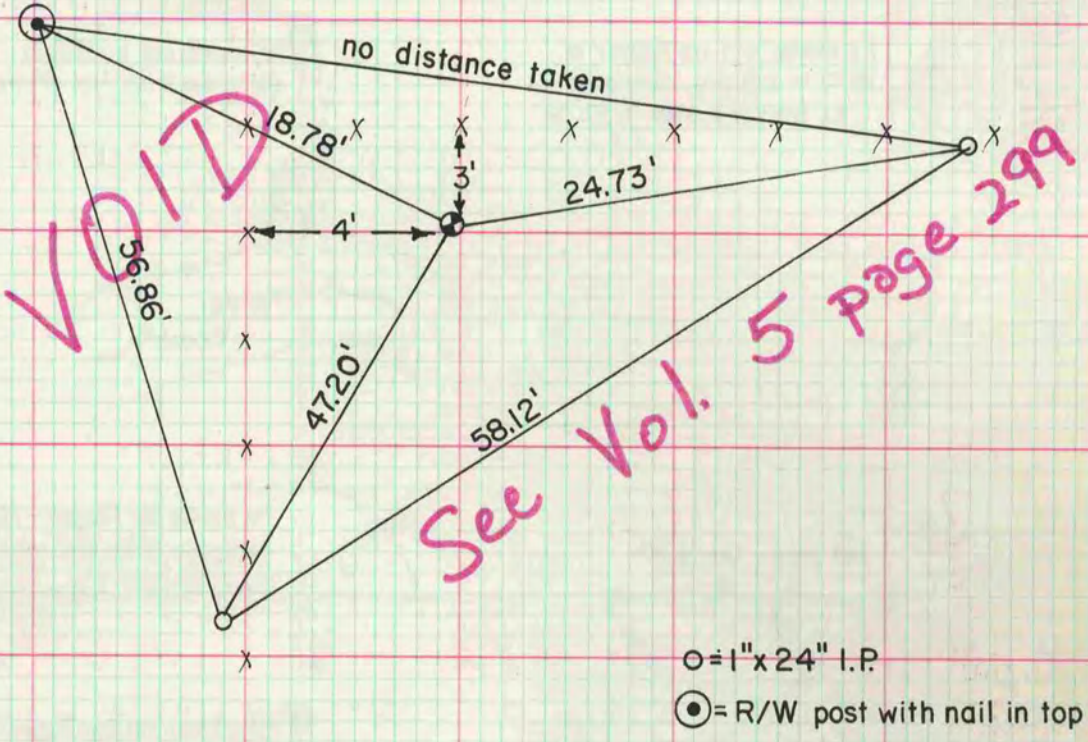
Of a Survey on Section ~~31~~ 31 T 1 R 10 E. of the 4 P. M. in AVON Township
 Rock County, Wisconsin, made JULY 5 1977

I hereby certify that the following is a correct record of said survey as made by me.

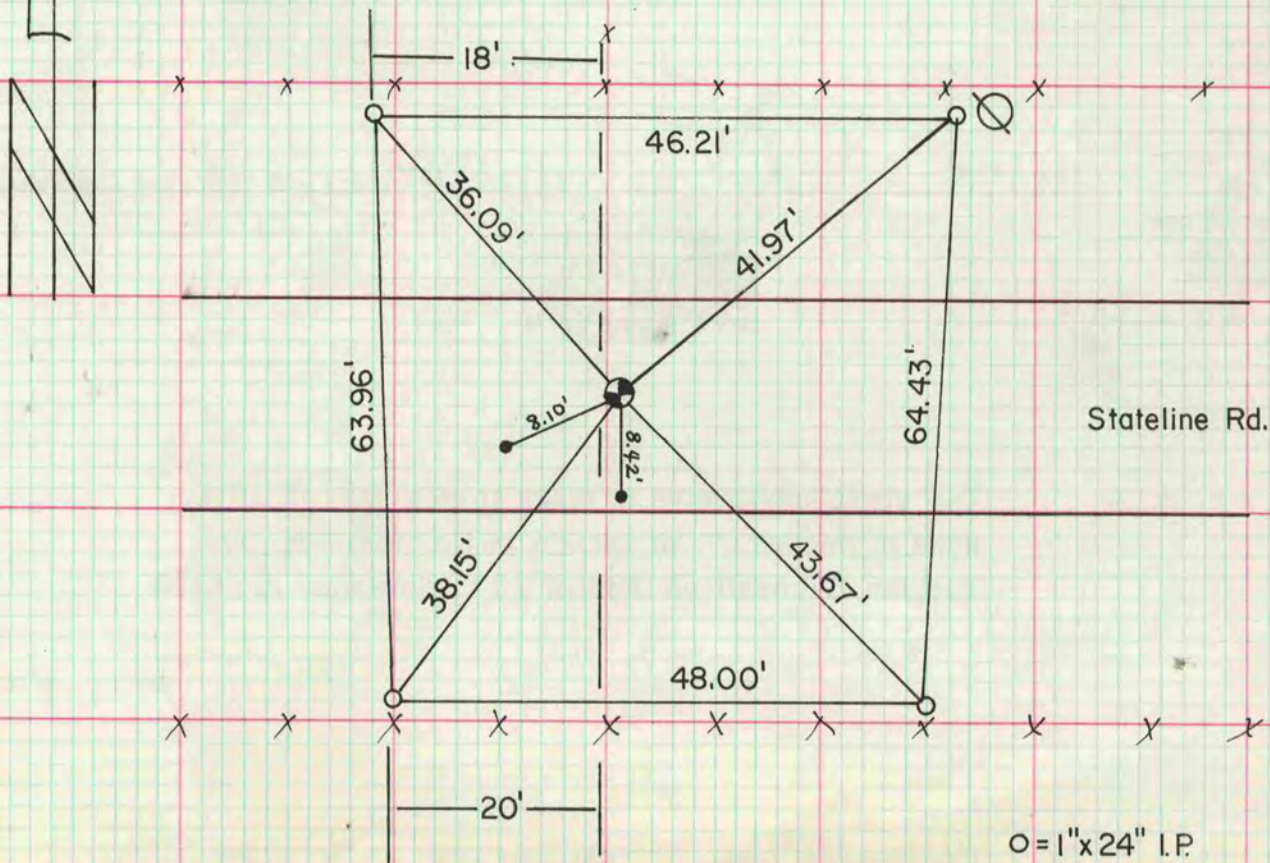
COUNTY BUILDING
 CITY OF JANESVILLE



E 1/4 cor sec 17-1-10
 dug and fd nothing. set on line with
 SE and NE cors sec 17 at single proportionate
 distance set alum mon.



S 1/4 cor sec 31-1-10
 dug and fd cut limestone 9"x 6"
 by 3 HH. stone was 4' deep.



MICROFILMED