

PLAT AND RECORD VOL. 5

305

Of a Survey on Section 24 T 1 N R 12 E. of the 4 P. M. in TURTLE BELOIT Township

Rock County, Wisconsin, made JULY the 25 1977

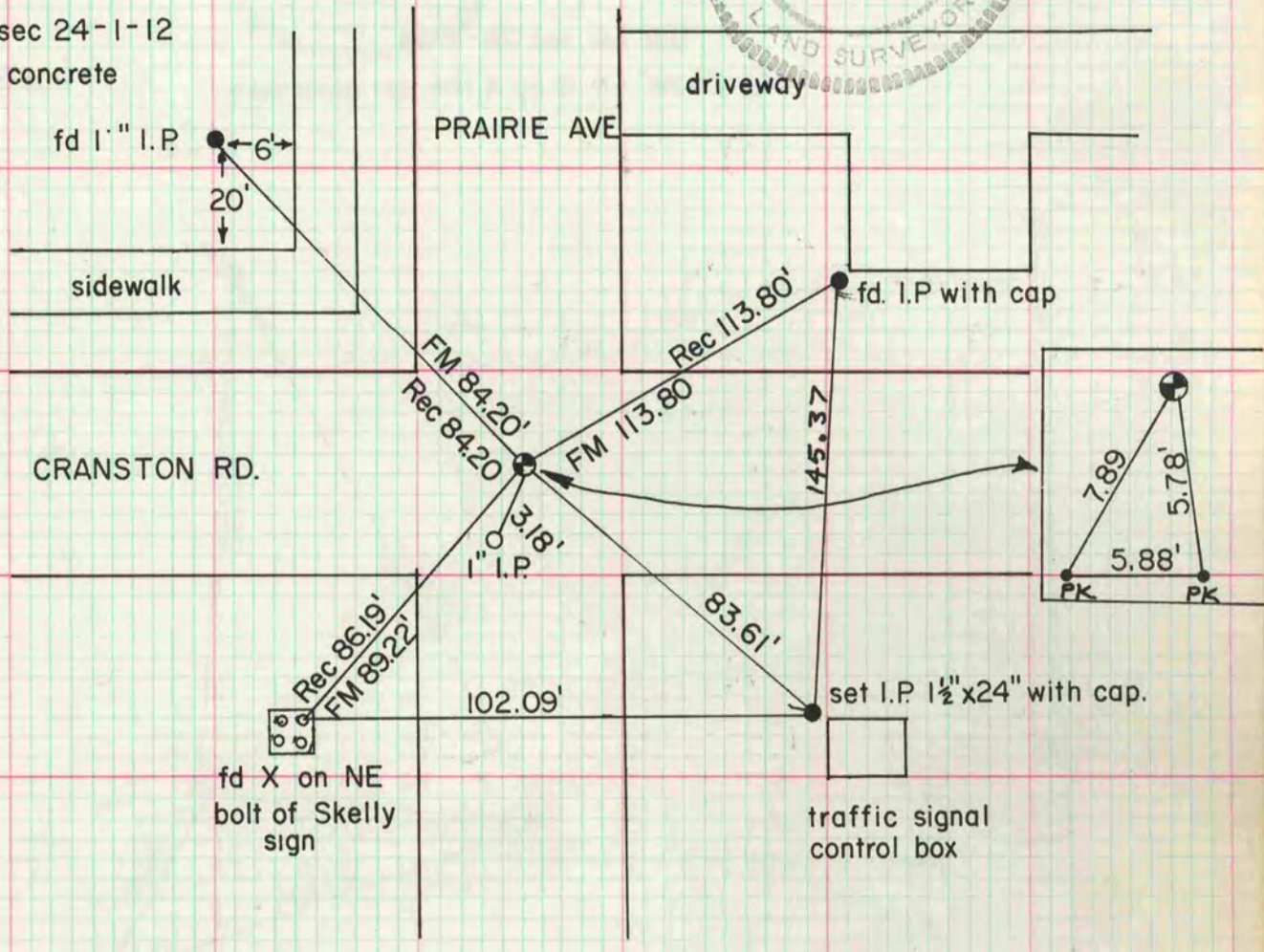
COUNTY BUILDING
CITY OF JANESVILLE

I hereby certify that the following is a correct record of said survey as made by me.

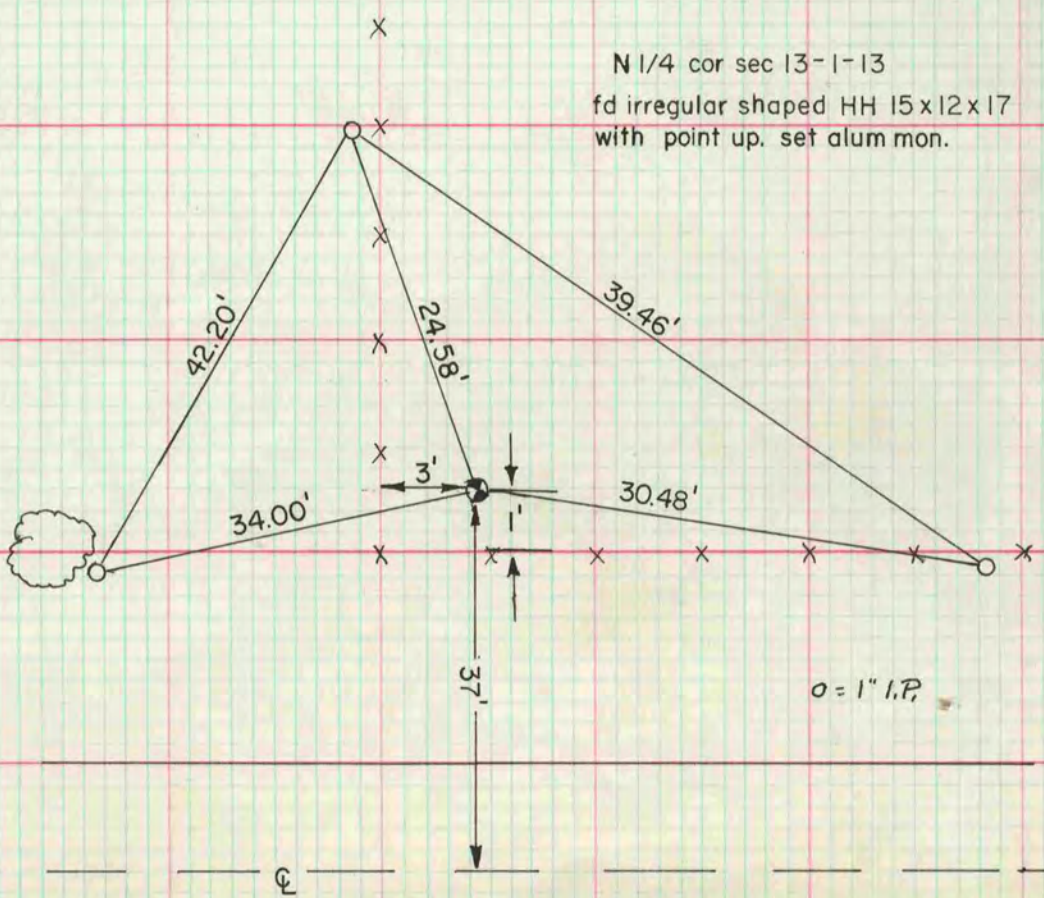
Donald Barnes
8-1216
JANESVILLE
WI.
COUNTY SURVEYOR

County Surveyor.

E 1/4 cor sec 24-1-12
set cap in concrete



N 1/4 cor sec 13-1-13
fd irregular shaped HH 15x12x17
with point up. set alum mon.



MICROFILMED

C.T.H. X