

VOL. 5 PLAT AND RECORD

Of a Survey on Section 18 T. 1 N. R. 11 E. of the 4 P. M. in NEWARK Township
Rock County, Wisconsin, made MAY 18 1977

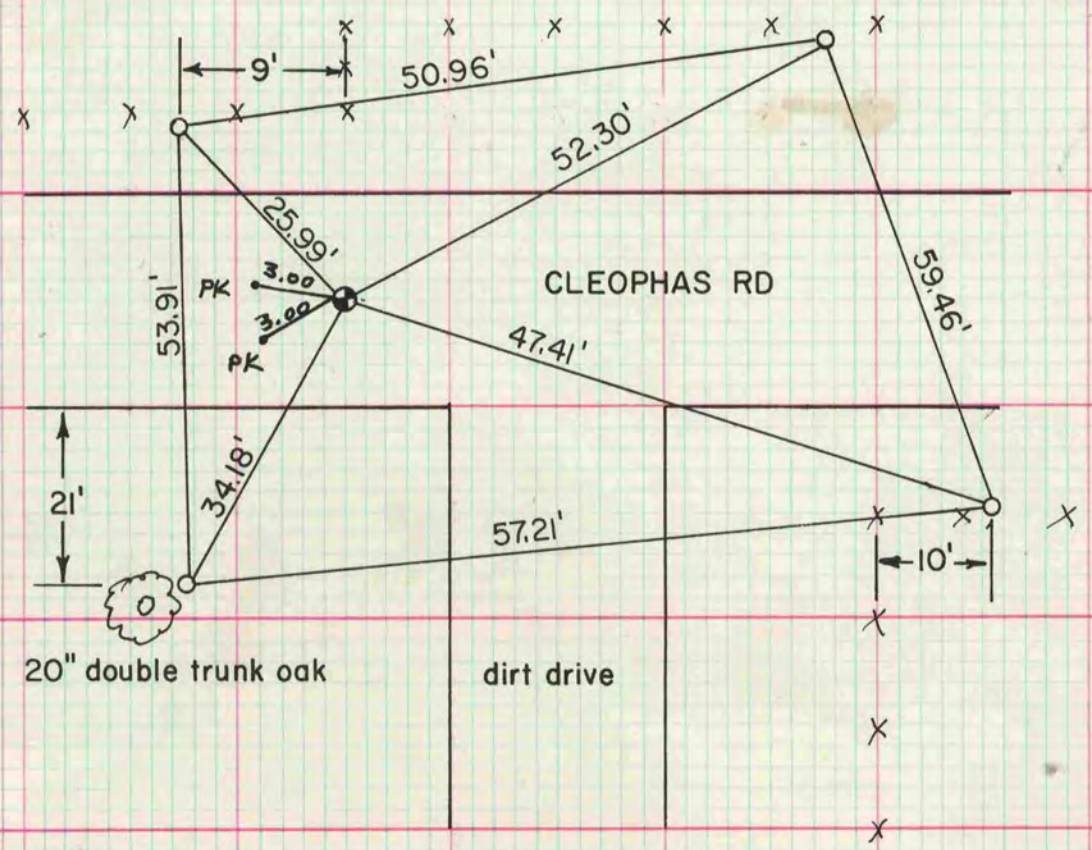
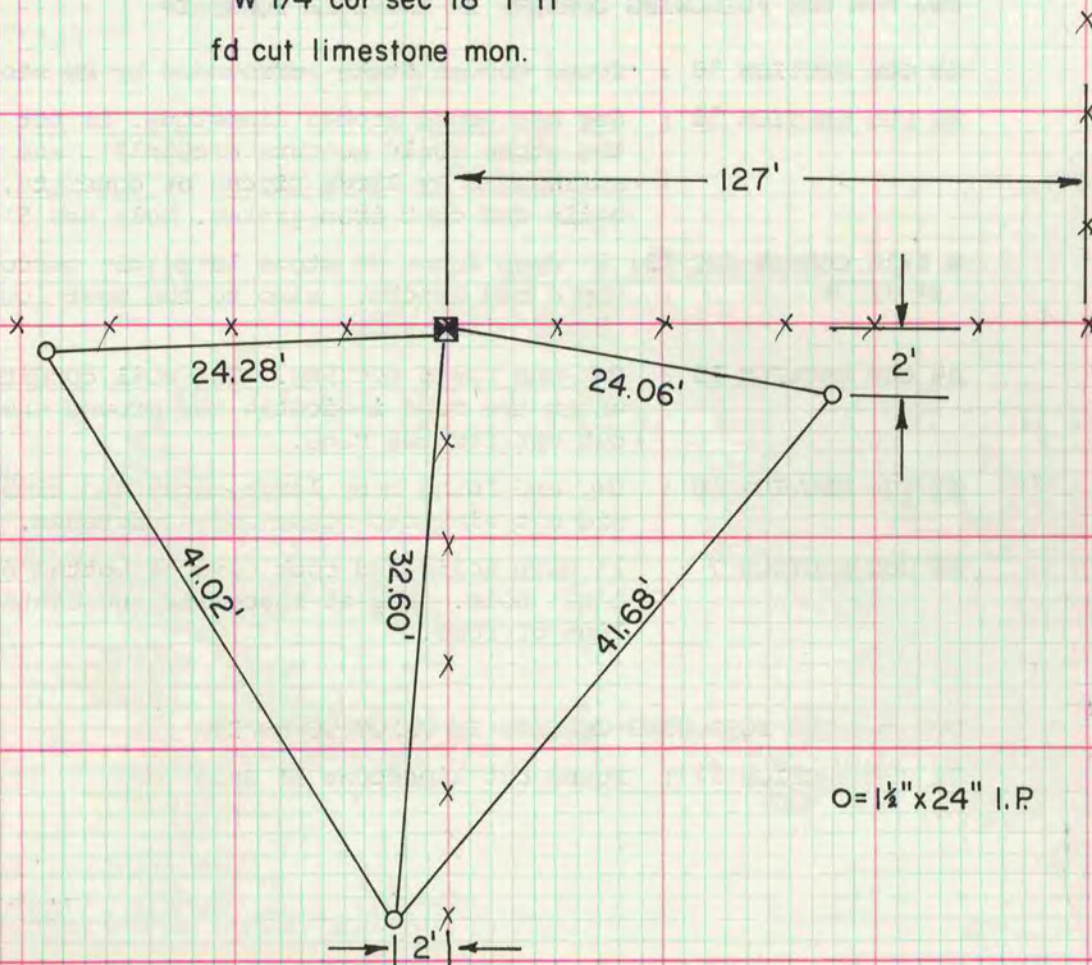
I hereby certify that the following is a correct record of said survey as made by me.

COUNTY BUILDING
CITY OF JANESVILLE

Donald Barnes



W 1/4 cor sec 18-1-11
fd cut limestone mon.



MICROFILMED

N 1/4 cor sec 18-1-11
0.5' deep fd 1' I.P. 28" deep
fd cut stone. set 20" alum mon

O = 1 1/2" x 24" I.P.