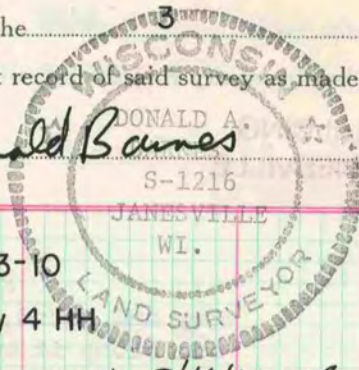


Of a Survey on Section 13 T 3 R 10 E. of the 4 P. M. in MAGNOLIA Township
 Rock County, Wisconsin, made AUGUST 3 the 1977

I hereby certify that the following is a correct record of said survey as made by me.

COUNTY BUILDING
 CITY OF JANESVILLE

Donald Barnes

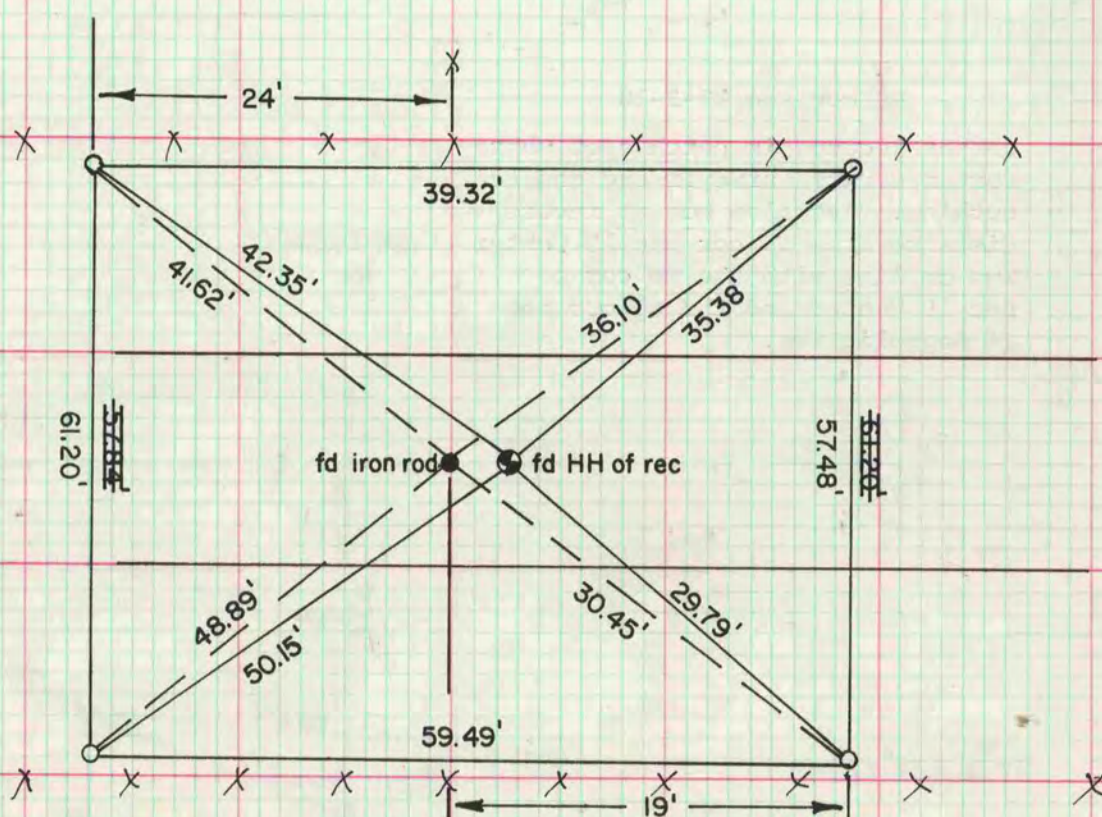
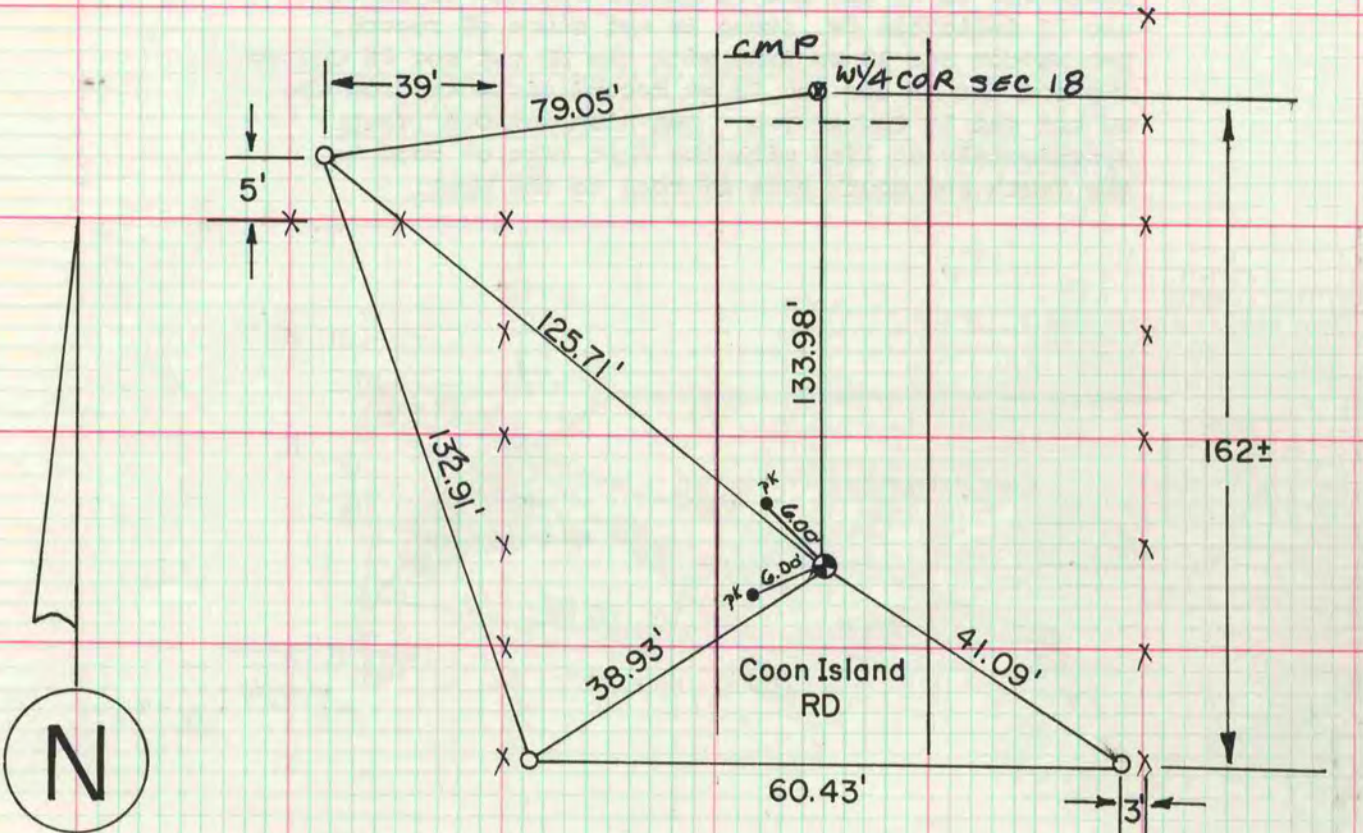


County Surveyor.

E 1/4 cor sec 13-3-10
 fd wooden stake 0 by 4 HH

SET ALUM MON 9/14/77 DAB

= 1/2" x 24" I.P.



N 1/16 cor of NE 1/4 sec 13-3-10
 dug and fd HH 10"x4"x5" 0 by 5 bricks. also fd
 1/2"x24" iron rod 1.44' west of HH. set 1/2"x24" I.P.
 at HH location.

MICROFILMED