

VOL. 5 PLAT AND RECORD

Of a Survey on Section 13 T 3 N R 10 E. of the 4 P. M. in MAGNOLIA Township

Rock County, Wisconsin, made AUG 3 1977

I hereby certify that the following is a correct record of said survey as made by me

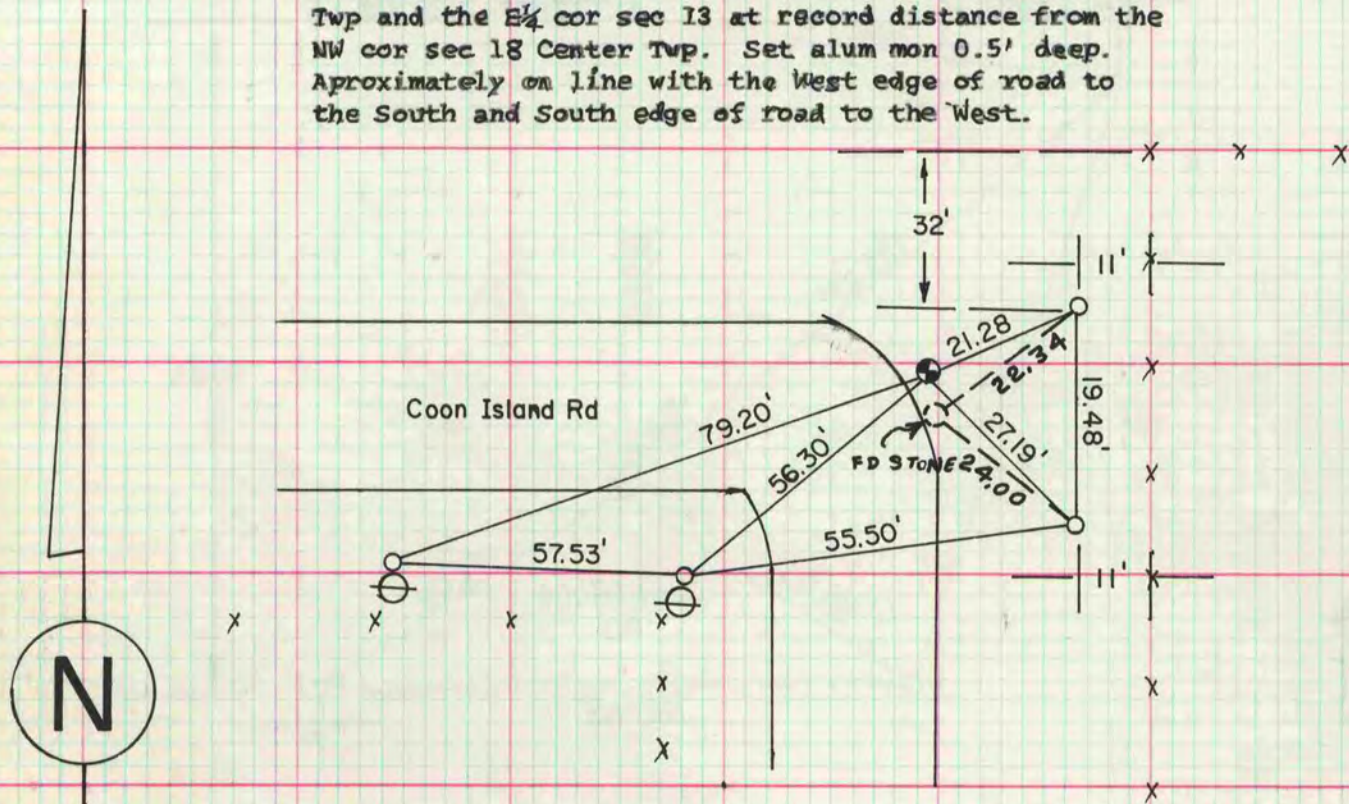
COUNTY BUILDING
CITY OF JANESVILLE



NE cor sec 13-3-10

Dug and found, 5' deep, broken limestone and if it was one stone it would be 4" x 6" x 12" surrounded by 4 large pieces of concrete, nails, and cast iron grates. Distances to NW cor sec 18 Center Twp and to E 1/4 cor sec 13 indicates fd. stone is not stone of record. Set NE cor sec 13 on line with the NW cor sec 18 Center Twp and the E 1/4 cor sec 13 at record distance from the NW cor sec 18 Center Twp. Set alum mon 0.5' deep. Approximately on line with the West edge of road to the South and South edge of road to the West.

MICROFILMED



SE cor sec 13-3-10

corner located in patch spot where former county surveyor dug and fd nothing. Set alum mon at record distance from NW cor sec 19 Center Twp on line with the NW cor of sec 19 Center and the E 1/4 cor sec 24 Magnolia Twp.

Coon Island Rd.

NW COR SEC 19

C.T.H. "A"

O = 1 1/4" x 24" I.P.

