

VOL. 5 PLAT AND RECORD

Of a Survey on Section 8 T 4 R 13 E. of the 4 P. M. in MILTON Township  
Rock County, Wisconsin, made AUG 18 1977

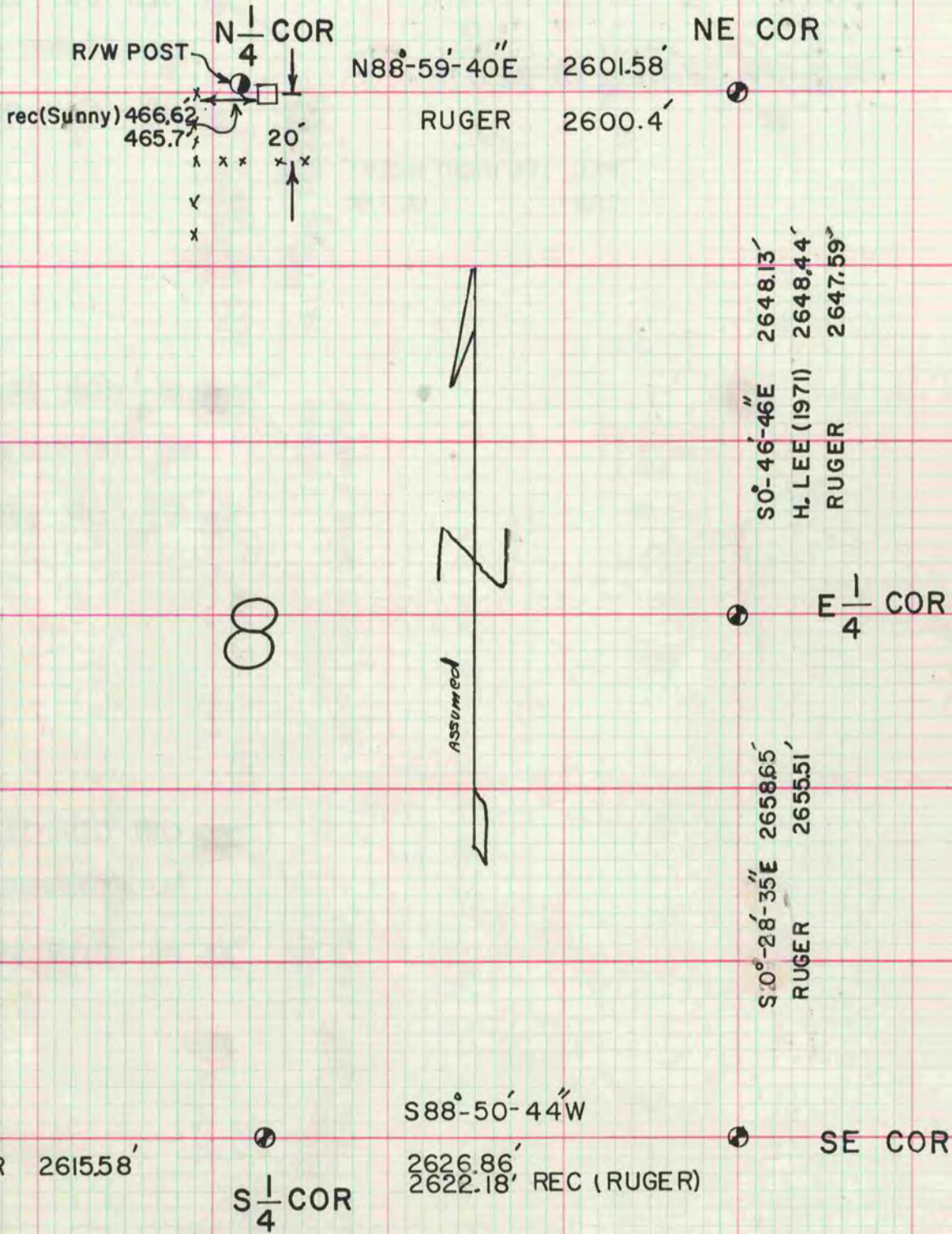
I hereby certify that the following is a correct record of said survey as made by me.

COUNTY BUILDING  
CITY OF JANESVILLE



THE GED. P. BARNARD COMPANY, ST. LOUIS

MICROFILMED



W 1/4 COR: Found cut limestone 2 1/2' deep. Set alum monument and R/W post to the NW. Set 1 1/2" iron pipe 292.27' south of the W 1/4 corner and on line with the SW corner of section 8. The iron pipe is 1' east of the east side of the Rock River Seventh Day Baptist Church historical marker.

N 1/4 COR: Found cut limestone 0.5' above the ground. Set R/W post NW of the corner. Also laid old iron fence post on east side of monument.

NOTE Unless stated all distances are computed from an unadjusted traverse.