

PLAT AND RECORD VOL. 5 315

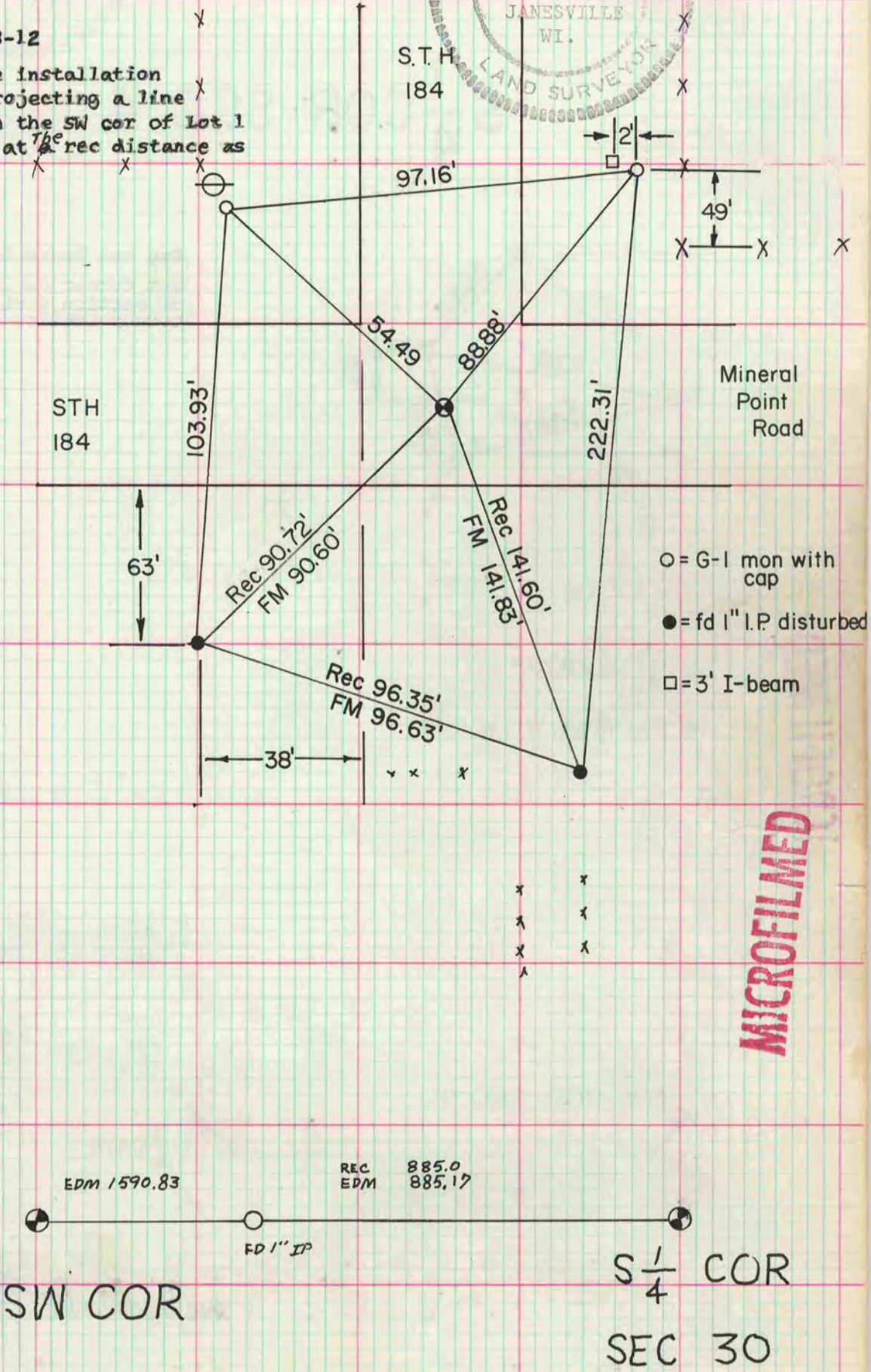
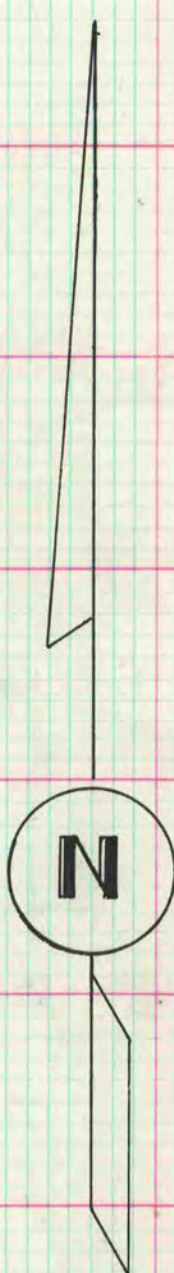
Of a Survey on Section 30 T. 3 N. R. 12 E. of the 4 P. M. in JANESVILLE Township
 Rock County, Wisconsin, made AUGUST the 18 1977

I hereby certify that the following is a correct record of said survey as made by me.

**COUNTY BUILDING
 CITY OF JANESVILLE**



SW cor sec 30-3-12
 Area disturbed by the installation of culverts. Set by projecting a line from the S $\frac{1}{4}$ cor through the SW cor of Lot 1 (pg 348 CSM vol 1) and at a rec distance as recorded by W.S.P.L.



MICROFILMED