

# VOL. 5 PLAT AND RECORD

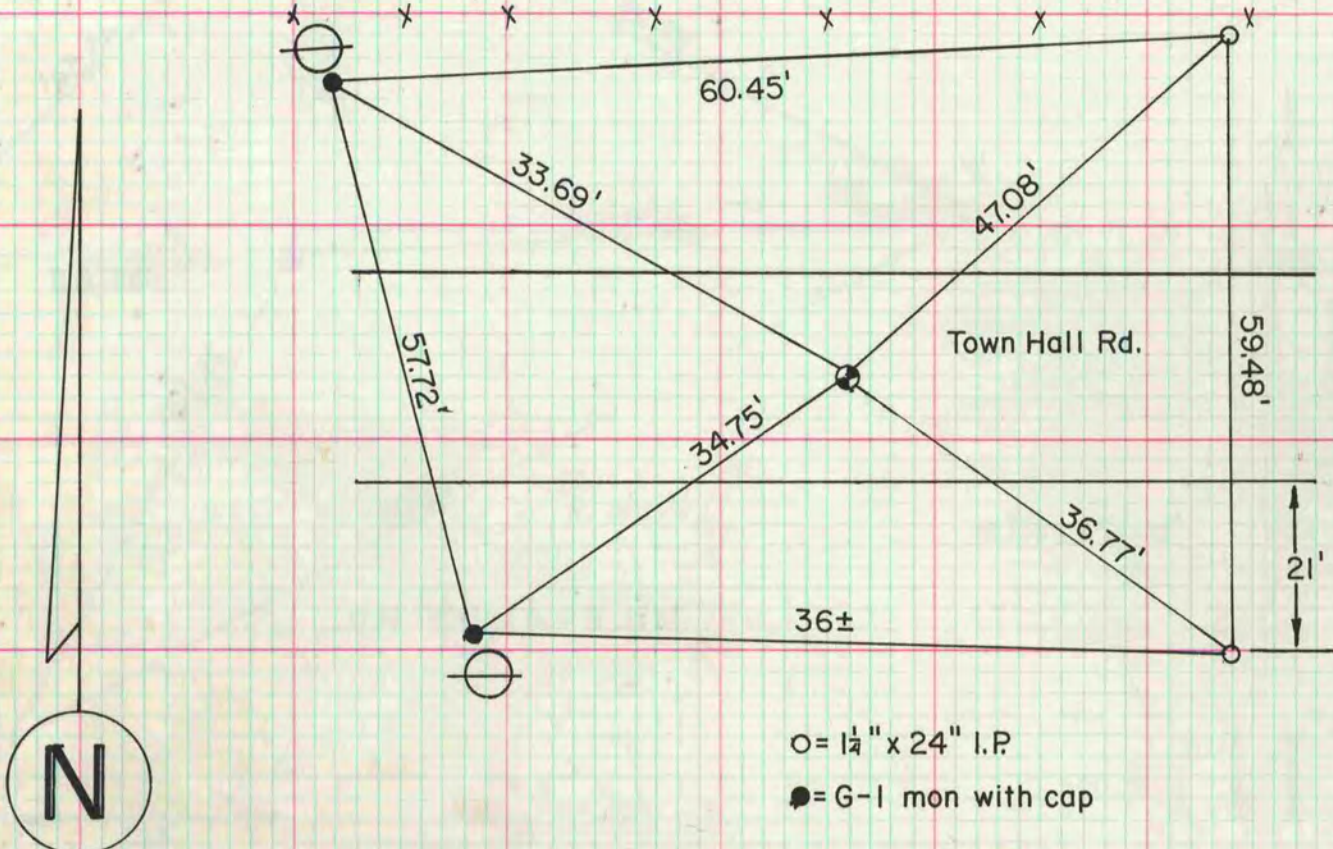
Of a Survey on Section 23, 24 T 2 N R 14 E. of the 4 P. M. in BRADFORD Township  
 Rock County, Wisconsin, made AUGUST the 30 1977

I hereby certify that the following is a correct record of said survey as made by me  
**COUNTY BUILDING**  
**CITY OF JANESVILLE**

*Donald Barnes*  
 County Surveyor



NW COR 1322' EDM 2648.11' N 4 COR 15.61' 16 COR EDM 1324.42' NE COR SEC 23 FD CON MON EDM 1324.42' BRASS CAP N 1/4 cor sec 23-2-14 fd HH 16x10x12 set alum mon  
 FD 1" IP RUGER (1873) 1322.8'



S 1/4 cor sec 24-2-14  
 fd 1" I.P. and 2.4' deep fd limestone, set alum mon

