

324 VOL. 5 PLAT AND RECORD

Of a Survey on Section 22 T 3 R 11 E. of the 4 P. M. in CENTER Township

Rock County, Wisconsin, made June the 12 1905

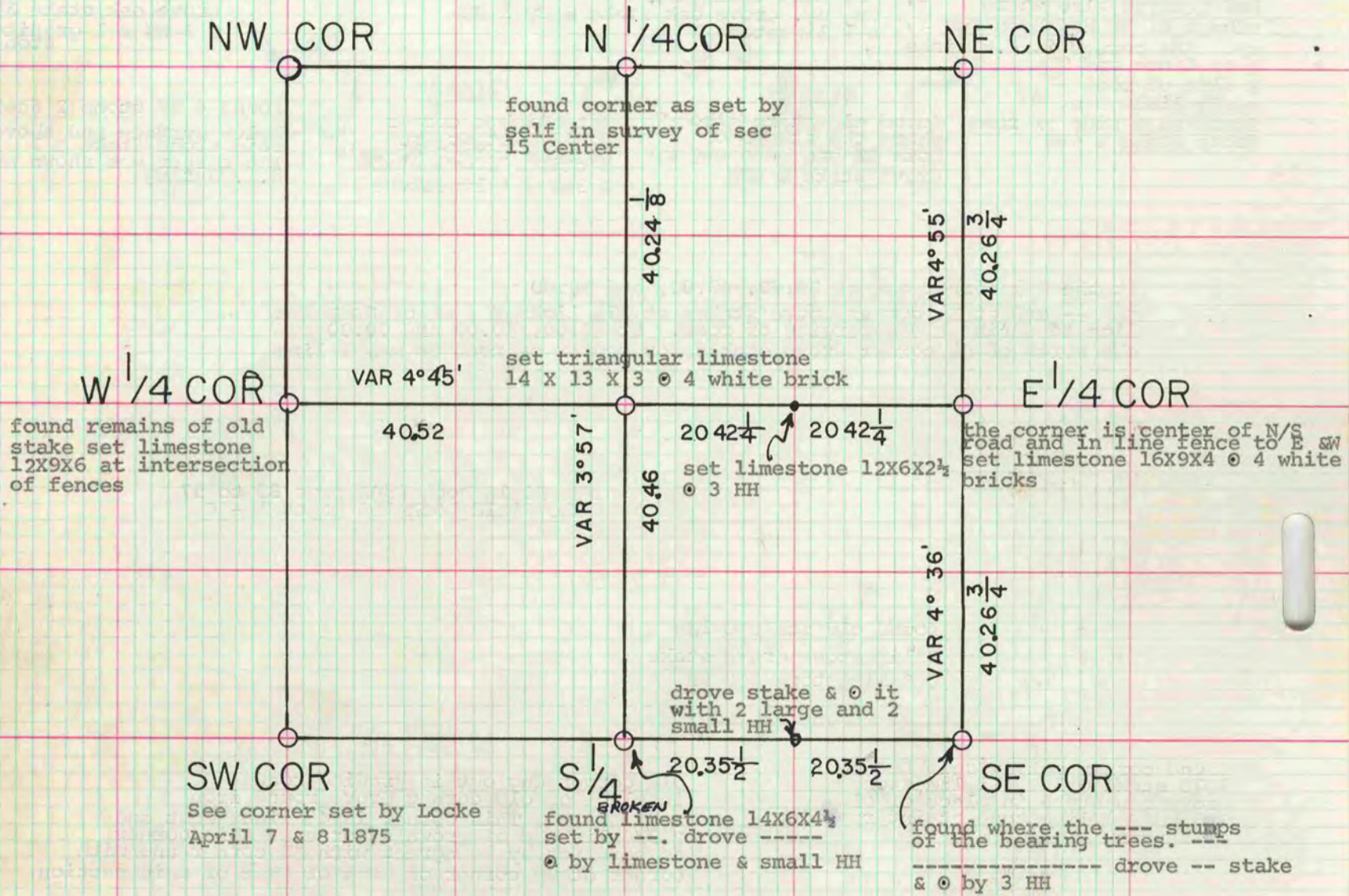
I hereby certify that the following is a correct record of said survey as made by me.

COUNTY BUILDING
CITY OF JANESVILLE

EDWARD RUGER

County Surveyor.

THE ALP. S. BARNES COMPANY, ST. LOUIS



See book 104 pages 115 to 126. also book 153 page 66

The above is a record and plat of a survey made by me on sec 22 Center
--- 8&9 1905 EDWARD RUGER

The above survey was copied from County Surveyor's Records 1859 - 1906 page 68. in back of
---- indicates word or words were not legible.

DONALD BARNES *Donald Barnes*

MICROFILMED