

CITY OF JANESVILLE
COUNTY BUILDING

PLAT AND RECORD VOL. 5

335

COUNTY BUILDING
CITY OF JANESVILLE

Of a Survey on Section 21, 28, 30 T. 1 R. 14 E. of the 4 P. M. in CLINTON Township

Rock County, Wisconsin, made SEP the 15 1977

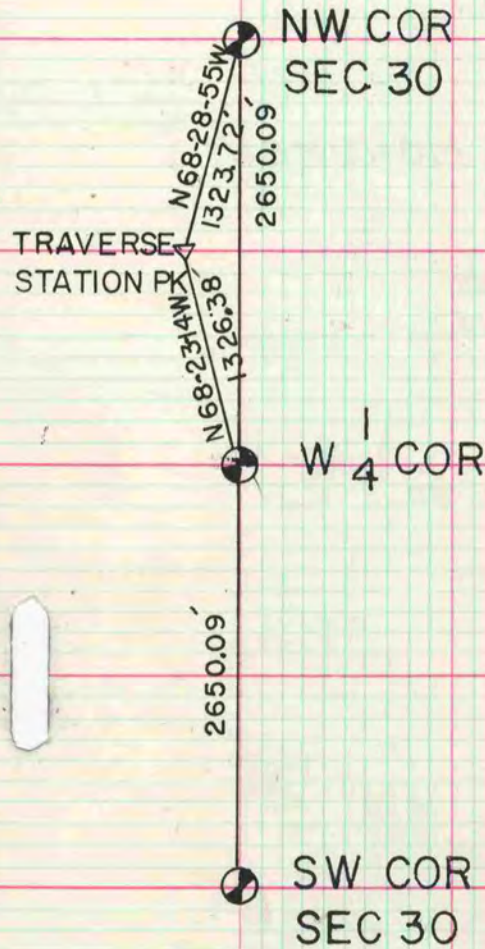
I hereby certify that the following is a correct record of said survey as made by me.



County Surveyor.

W 1/4 COR SEC 30

FORMER COUNTY SURVEYOR DUG & FOUND NOTHING. R. LEUENBERGER
SET CORNER ON LINE WITH NW & SW CORNER AT MID DISTANCE.



MICROFILMED

SECTION	CORNER	MON FD	REMARKS
30	SE	1 1/4" IP & 2' DEEP STONE Ø 3 HH	SET ALUM MON
21	SW	PK	SET ALUM MON
28	N 1/4	PK	SET ALUM MON