

PLAT AND RECORD

COUNTY BUILDING
CITY OF JANESVILLE

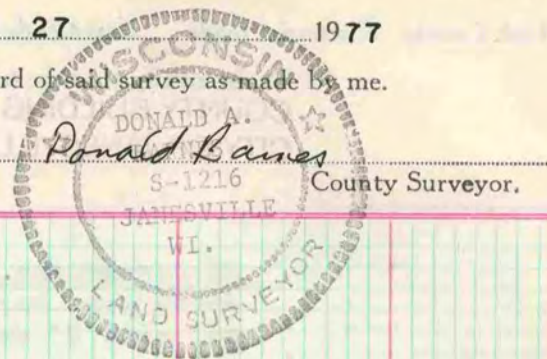
VOL. 5

337

Of a Survey on Section 30 T 1 R 14 E. of the 4 P. M. in CLINTON Township

Rock County, Wisconsin, made SEPTEMBER 27 1977

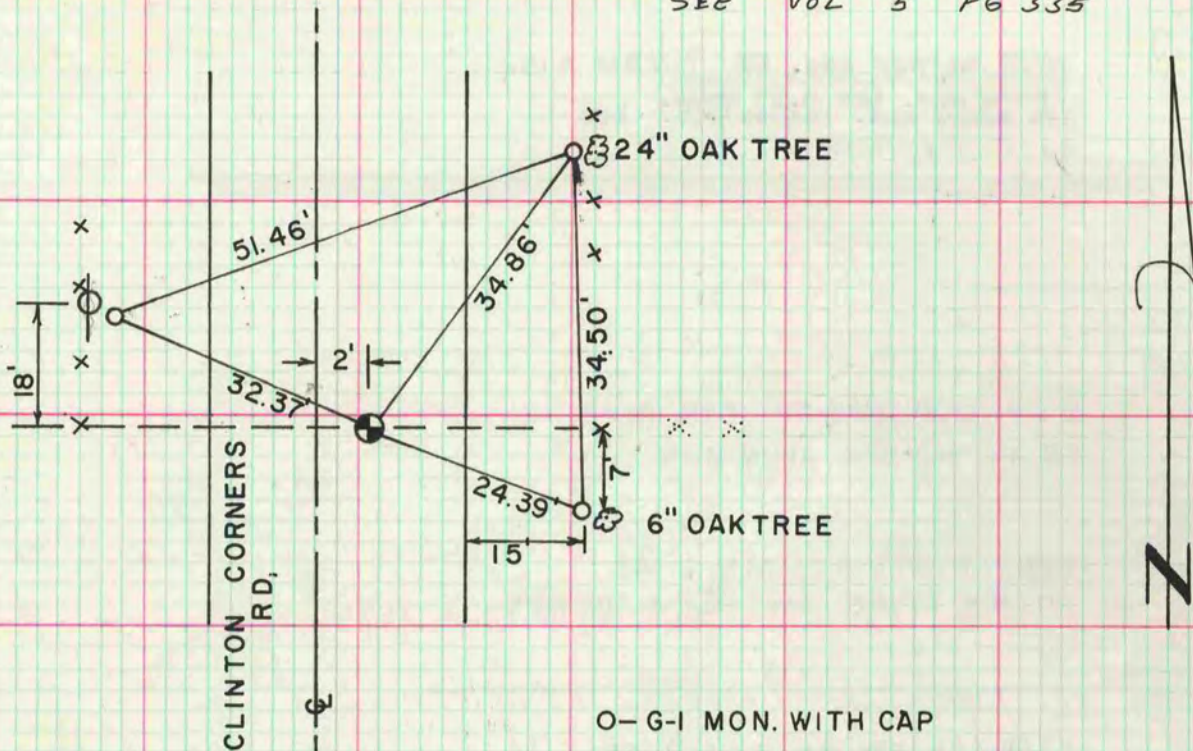
I hereby certify that the following is a correct record of said survey as made by me.



W 1/4 COR. SEC. 30

SET ALUM. MON.
CORNER IS IN OLD EXCAVATION LOCATION

SEE VOL 5 PG 335



O - G-I MON. WITH CAP

MICROFILMED