

PLAT AND RECORD

373

VOL. 5

Of a Survey on Section 1 3 12 T. 4 R. 12 E. of the 4 P. M. in JANESVILLE Township
FULTON
Rock County, Wisconsin, made Nov the 19 77

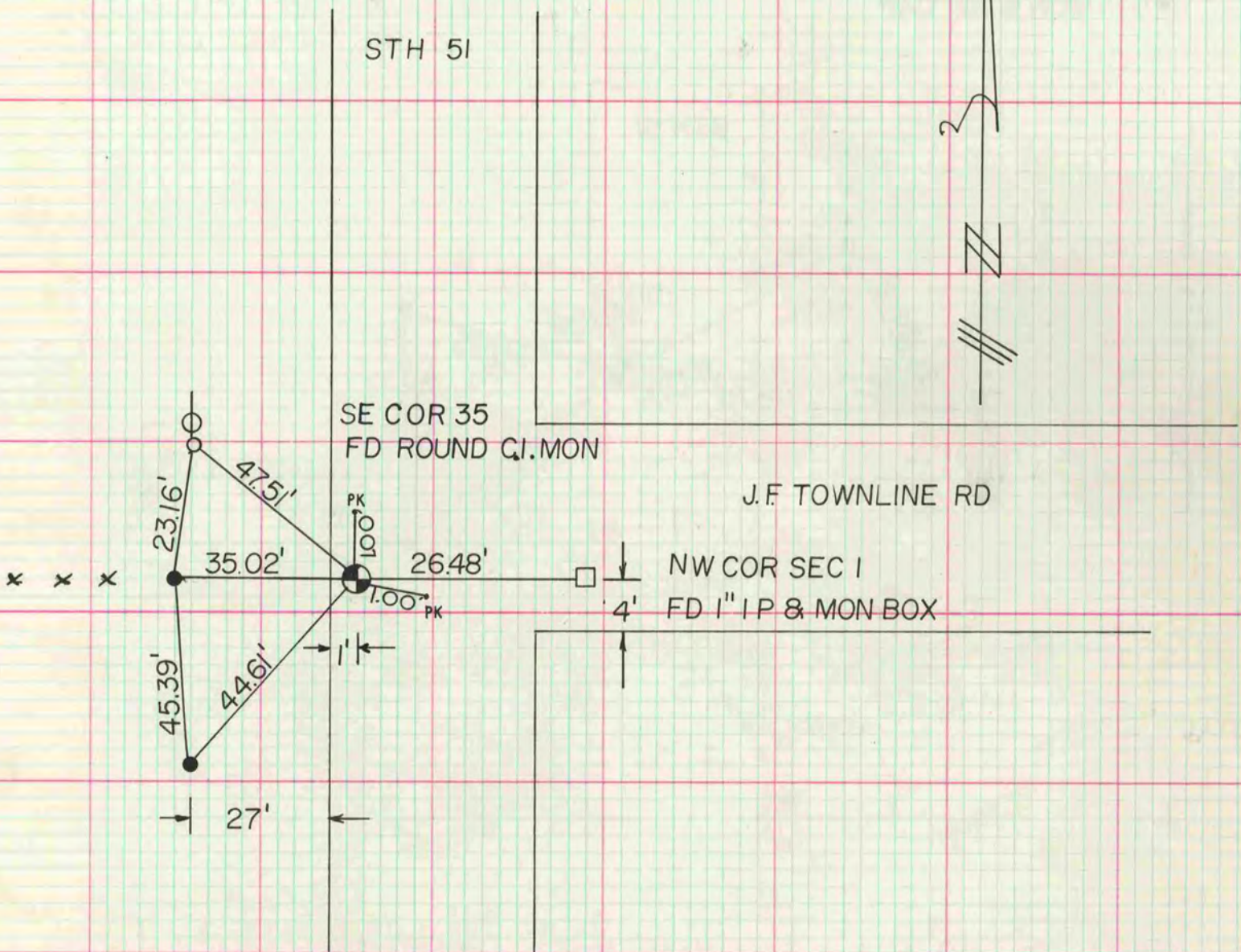
I hereby certify that the following is a correct record of said survey as made by me

COUNTY BUILDING
CITY OF JANESVILLE



SE COR SEC 35 T4 R12E
NW COR SEC 1 T3 R12E

- G-I MON WITH CAP
- FD 1" IP



MICROFILMED