

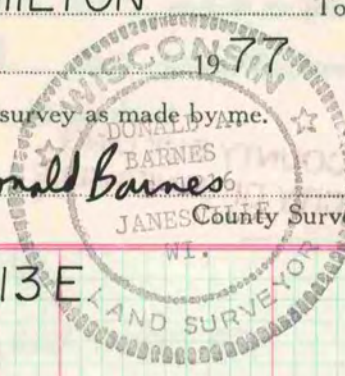
PLAT AND RECORD

Of a Survey on Section 6 T 4 R 13 E. of the 4 P. M. in MILTON Township
Rock County, Wisconsin, made NOV the 23 19 77

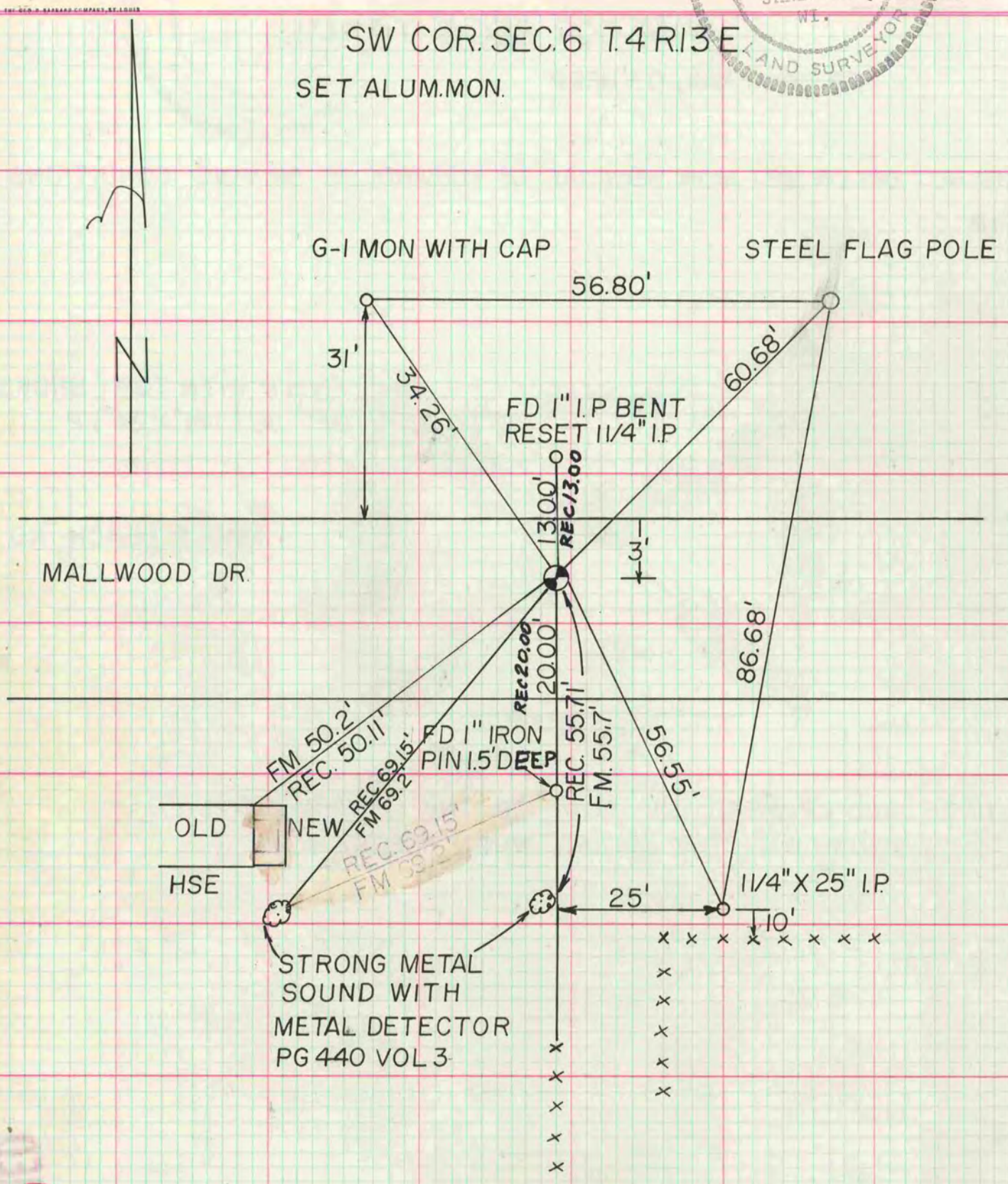
COUNTY BUILDING
CITY OF JANESVILLE

I hereby certify that the following is a correct record of said survey as made by me.

Donald Barnes
JANESVILLE
County Surveyor,
WI.



SW COR. SEC. 6 T. 4 R. 13 E.
SET ALUM. MON.



MICROFILMED