

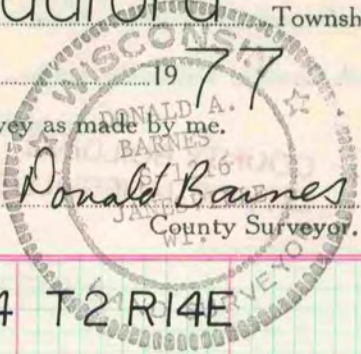
PLAT AND RECORD

VOL. 5

Of a Survey on Section 23 T 2 R 14 E. of the 4 P.M. in Bradford Township
Rock County, Wisconsin, made Dec the 5 1977

I hereby certify that the following is a correct record of said survey as made by me.

COUNTY BUILDING
CITY OF JANESVILLE

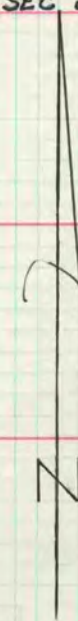
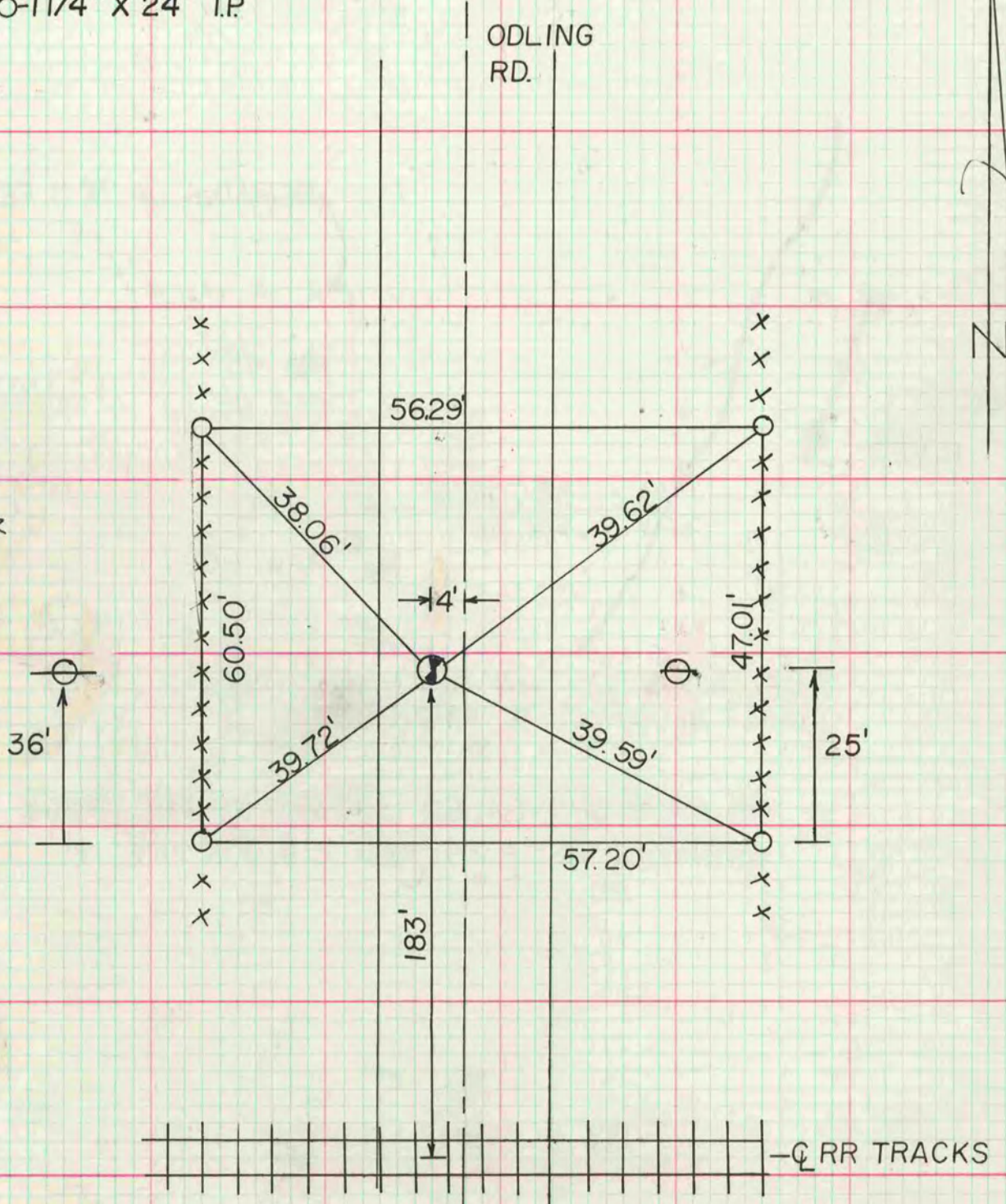


S 1/16 COR. SW 1/4 T2 R14E

SET 1 1/4" X 6" I.P.

SET CORNER ON LINE WITH N 1/16 CORNER AND CENTER SW 1/4 SEC 23

O-1 1/4" X 24" I.P.



MICROFILMED