

PLAT AND RECORD

VOL. 5

Of a Survey on Section 31, 32 T 5 R 14 E. of the 4 P. M. in KOSHKONONG Township

Rock County, Wisconsin, made APRIL the 4 19 74

I hereby certify that the following is a correct record of said survey as made by me.

COUNTY BUILDING
CITY OF JANESVILLE

Donald Barnes
County Surveyor.

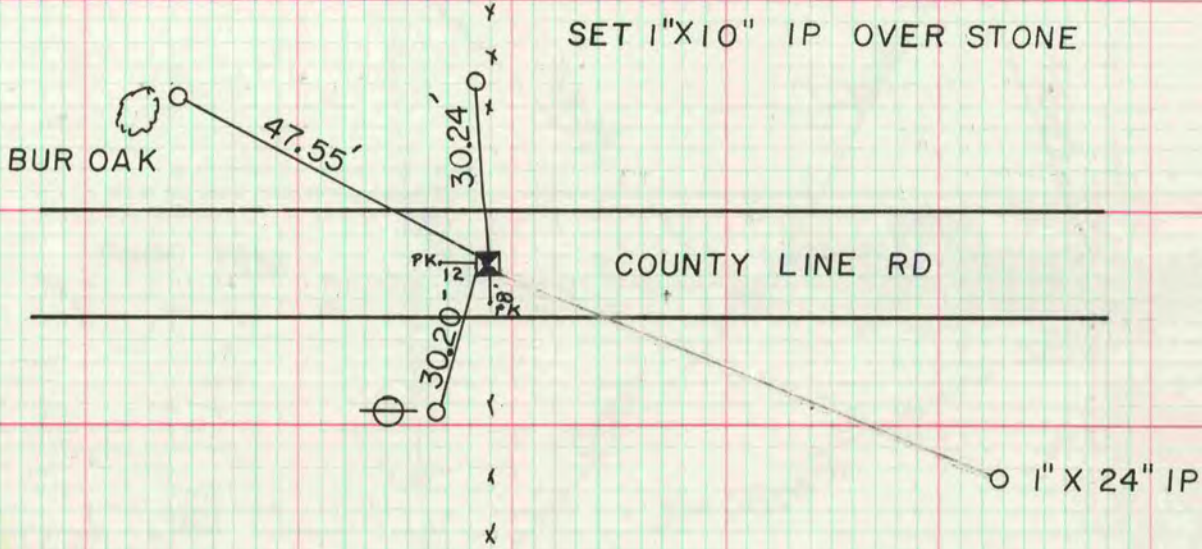
COUNTY BUILDING
CITY OF JANESVILLE

TIES FROM JEFFERSON COUNTY SURVEYOR
KOSHKONONG RESURVEY 1886

SW CORNER SEC 31 T5N R14E

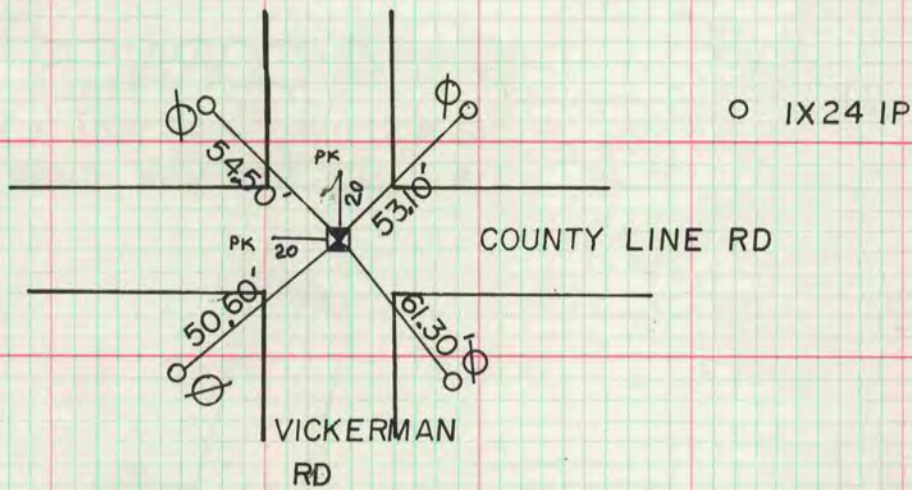
DUG & FOUND CUT LIMESTONE 10" DEEP.

SET 1" X 10" IP OVER STONE



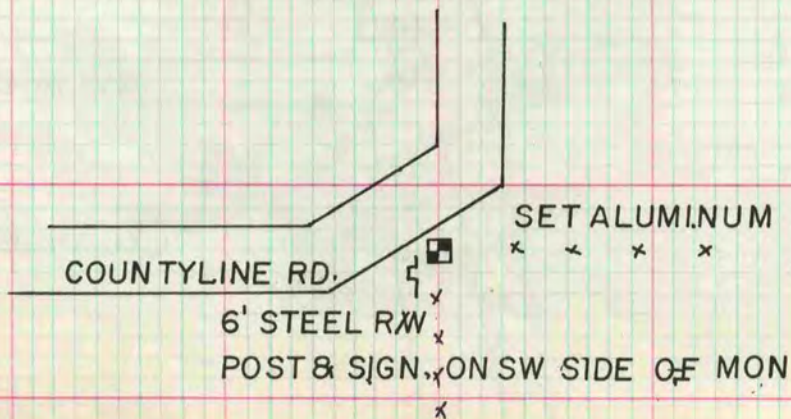
S 1/4 CORNER SEC 31 T5N R14E

DUG & FOUND THE BOTTOM 18" OF THE LIMESTONE
ABOUT 3' DEEP SET 1" X 24" IP OVER STONE



S 1/4 CORNER SEC 32 T5R14E

SET ALUMINUM MAGNETIZED MON
OVER STONE



MICROFILMED